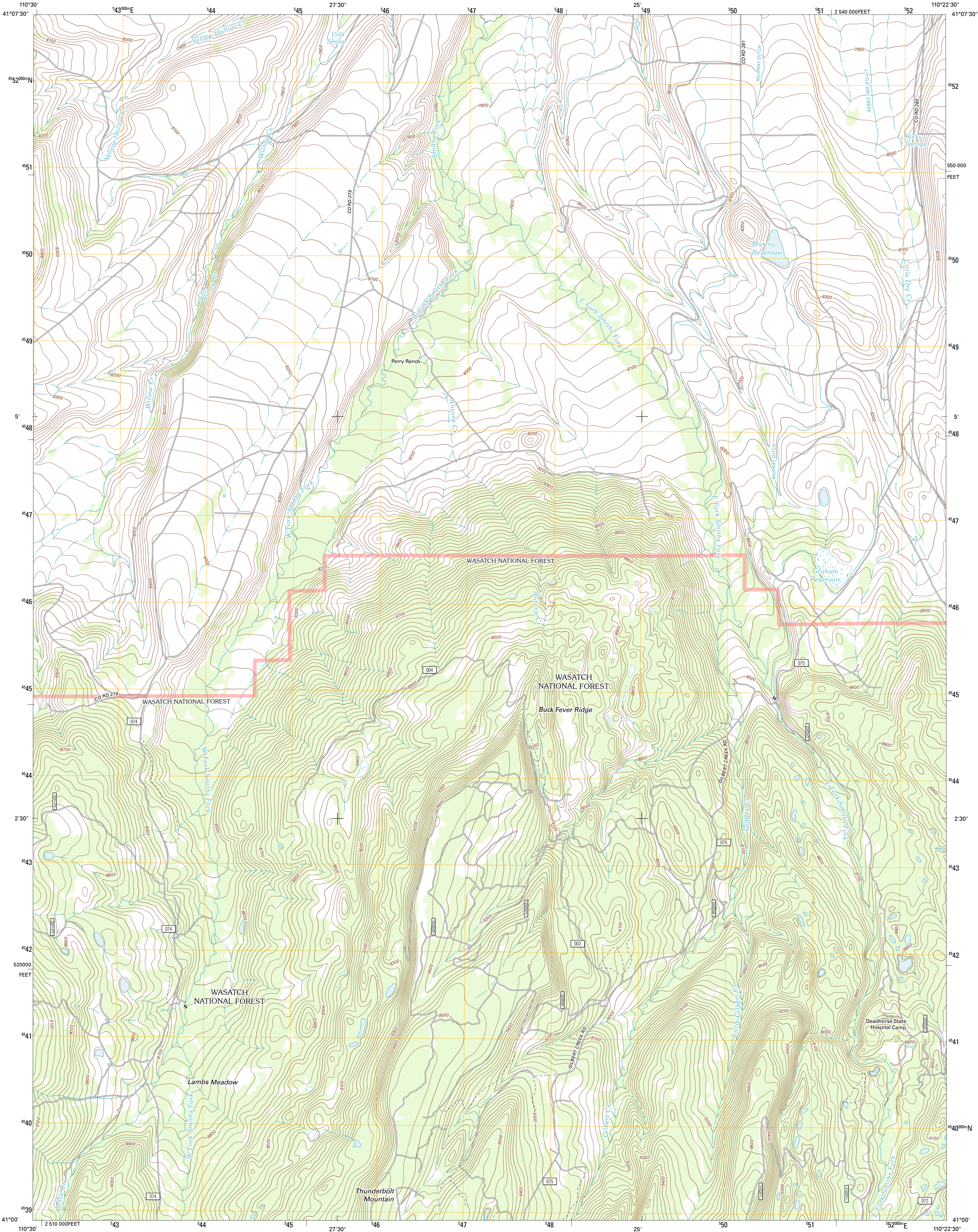




U.S. DEPARTMENT OF THE INTERIOR  
U. S. GEOLOGICAL SURVEY

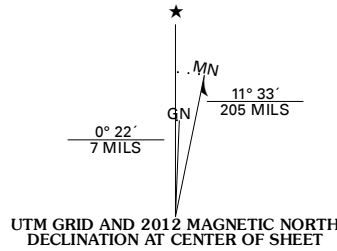


BUCK FEVER RIDGE QUADRANGLE  
WYOMING-UINTA CO.  
7.5-MINUTE SERIES

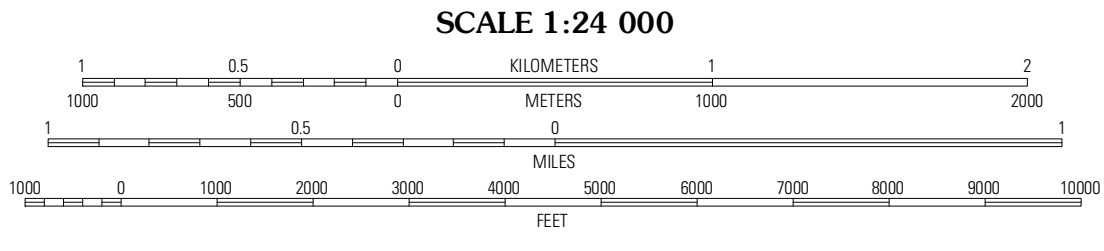


Produced by the United States Geological Survey  
North American Datum of 1983 (NAD83)  
World Geodetic System of 1984 (WGS84). Projection and  
1 000-meter grid: Universal Transverse Mercator, Zone 12T  
10 000-foot ticks: Wyoming Coordinate System of 1983  
(west zone)

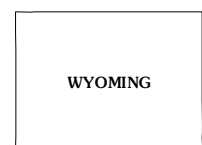
Imagery.....NAIP, July 2009  
Roads.....©2006-2011 TomTom  
Roads within US Forest Service Lands  
with limited Forest Service updates, 2009  
Names.....GNIS, 2011  
Hydrography.....National Hydrography Dataset, 2009  
Contours.....National Elevation Dataset, 2000  
Boundaries.....Census, IBWC, IBC, USGS, 1972-2010  
Public Land Survey System.....BLM, 2006-2008



U.S. National Grid
100,000-m Square ID
WL
Grid Zone Designation
12T

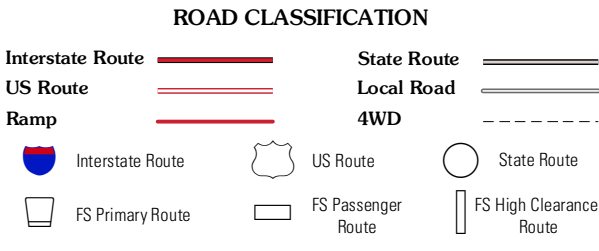


CONTOUR INTERVAL 20 FEET  
NORTH AMERICAN VERTICAL DATUM OF 1988  
This map was produced to conform with the  
National Geospatial Program US Topo Product Standard, 2011.  
A metadata file associated with this product is draft version 0.6.3



Hague Creek	Robertson	Leavitt Bench
Meeks Cabin Reservoir	Buck Fever Ridge	Table Mountain
Lyman Lake	Bridger Lake	Gilbert Peak NE

ADJOINING 7.5 QUADRANGLES



Check with local Forest Service unit  
for current travel conditions and restrictions.

BUCK FEVER RIDGE, WY  
2012