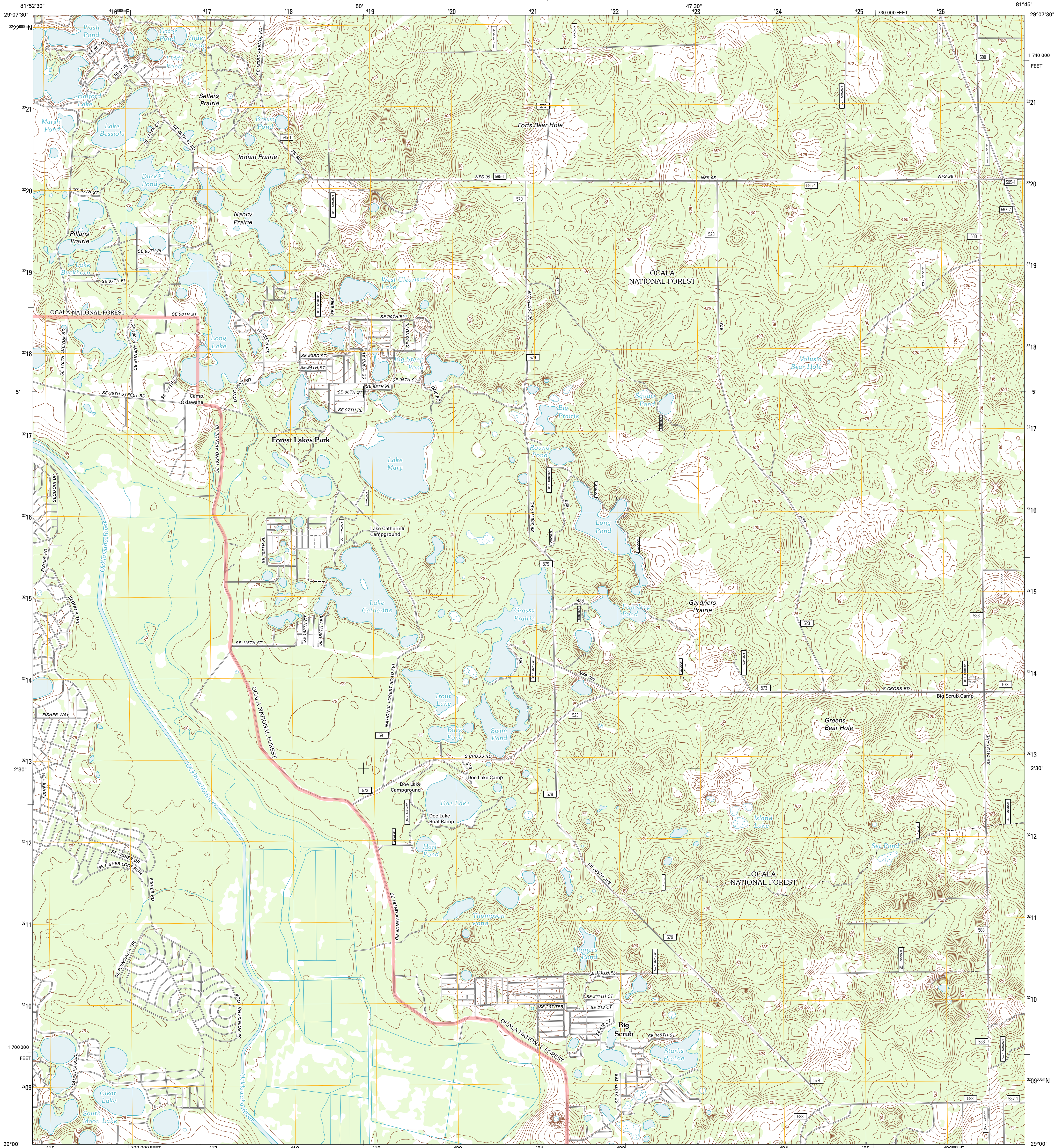




U.S. DEPARTMENT OF THE INTERIOR
U. S. GEOLOGICAL SURVEY



LAKE MARY QUADRANGLE
FLORIDA-MARION CO.
7.5-MINUTE SERIES

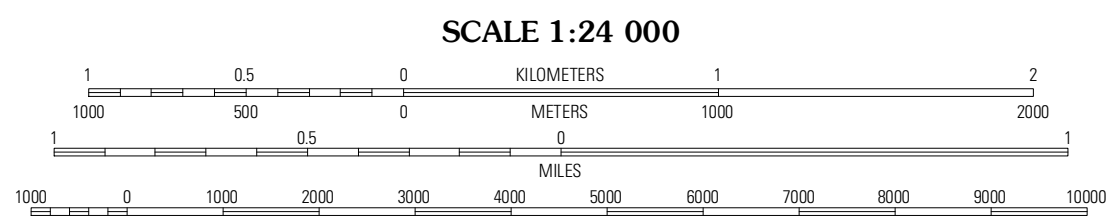


Produced by the United States Geological Survey
North American Datum of 1983 (NAD83)
World Geodetic System of 1984 (WGS84). Projection and
1 000-meter grid: Universal Transverse Mercator, Zone 17R
10 000-foot ticks: Florida Coordinate System of 1983 (west
zone)

Imagery.....NAIP, June 2010 - September 2010
Roads.....©2006-2011 TomTom
Roads within US Forest Service Lands.....FS Topo Data
with limited Forest Service updates, 2009
Names.....GNIS, 2011
Hydrography.....National Hydrography Dataset, 2010
Contours.....National Elevation Dataset, 2009
Boundaries.....Census, IBWC, IBC, USGS, 1972 - 2010

UTM GRID AND 2012 MAGNETIC NORTH
DECLINATION AT CENTER OF SHEET

U.S. National Grid
100,000-m Square ID
MN
Grid Zone Designation
17R



CONTOUR INTERVAL 5 FEET
NORTH AMERICAN VERTICAL DATUM OF 1988
This map was produced to conform with the
National Geospatial Program US Topo Product Standard, 2011.
A metadata file associated with this product is draft version 0.6.3



ADJOINING 7.5' QUADRANGLES		
Lynne	Halfmoon Lake	Juniper Springs
Lake Weir	Lake Mary	Fairfax Lake
Lady Lake	Emerald Island	Umatilla

ROAD CLASSIFICATION

Interstate Route	State Route
US Route	Local Road
4WD	4WD

Legend for road types:
Interstate Route (thick red line)
US Route (red line)
State Route (thin red line)
Local Road (black line)
4WD (dashed line)
FS Primary Route (thick black line)
FS Passenger Route (thin black line)
FS High Clearance Route (dashed black line)

Check with local Forest Service unit
for current travel conditions and restrictions.

LAKE MARY, FL
2012