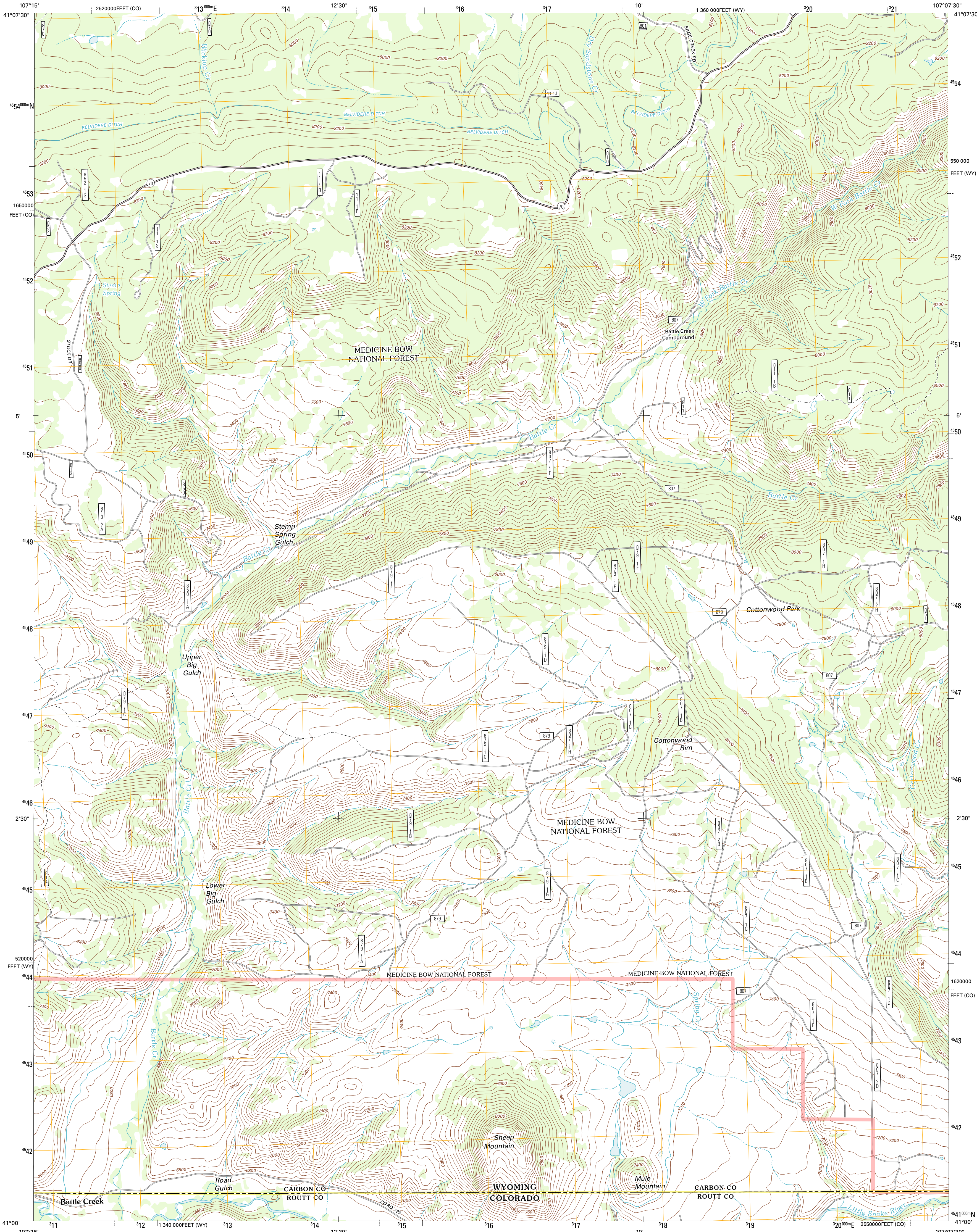




U.S. DEPARTMENT OF THE INTERIOR  
U. S. GEOLOGICAL SURVEY



COTTONWOOD RIM QUADRANGLE  
WYOMING-COLORADO  
7.5-MINUTE SERIES

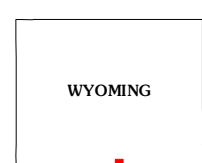


Produced by the United States Geological Survey  
North American Datum of 1983 (NAD83)  
World Geodetic System of 1984 (WGS84). Projection and  
1 000-meter grid: Universal Transverse Mercator, Zone 13T  
10 000-foot ticks: Wyoming Coordinate System of 1983 (east  
central zone), Colorado Coordinate System of 1983 (north  
zone)  
Imagery.....NAIP, July 2009  
Roads.....©2006-2011 TomTom  
Roads within US Forest Service Lands.....FS Topo Data  
with limited Forest Service updates, 2009  
Names.....GNIS, 2011  
Hydrography.....National Hydrography Dataset, 2009  
Contours.....National Elevation Dataset, 2006  
Boundaries.....Census, BWC, IBC, USGS, 1972 - 2010  
Public Land Survey System.....BLM, 2006 - 2008

UTM GRID AND 2012 MAGNETIC NORTH  
DECLINATION AT CENTER OF SHEET

U.S. National Grid  
100,000-m Square ID  
CF  
Grid Zone Designation  
13T

SCALE 1:24 000  
1 000 0 500 0 500 1 000 2 000  
KILOMETERS  
1 000 0 500 0 500 1 000 2 000  
METERS  
1 000 0 1000 2000 3000 4000 5000 6000 7000 8000 9000 10000  
MILES  
FEET  
CONTOUR INTERVAL 40 FEET  
NORTH AMERICAN VERTICAL DATUM OF 1988  
This map was produced to conform with the  
National Geospatial Program US Topo Product Standard, 2011.  
A metadata file associated with this product is draft version 0.6.3



Tullis	Singer Peak	Bridger Peak
Grieve Reservoir	Cottonwood Rim	Fletcher Peak
Fly Creek	Tumble Mountain	Shield Mountain

ADJOINING 7.5 QUADRANGLES

ROAD CLASSIFICATION  
Interstate Route  
US Route  
Ramp  
Interstate Route  
US Route  
FS Primary Route  
State Route  
Local Road  
4WD  
FS Passenger Route  
FS High Clearance Route  
Check with local Forest Service unit  
for current travel conditions and restrictions.

COTTONWOOD RIM, WY-CO  
2012