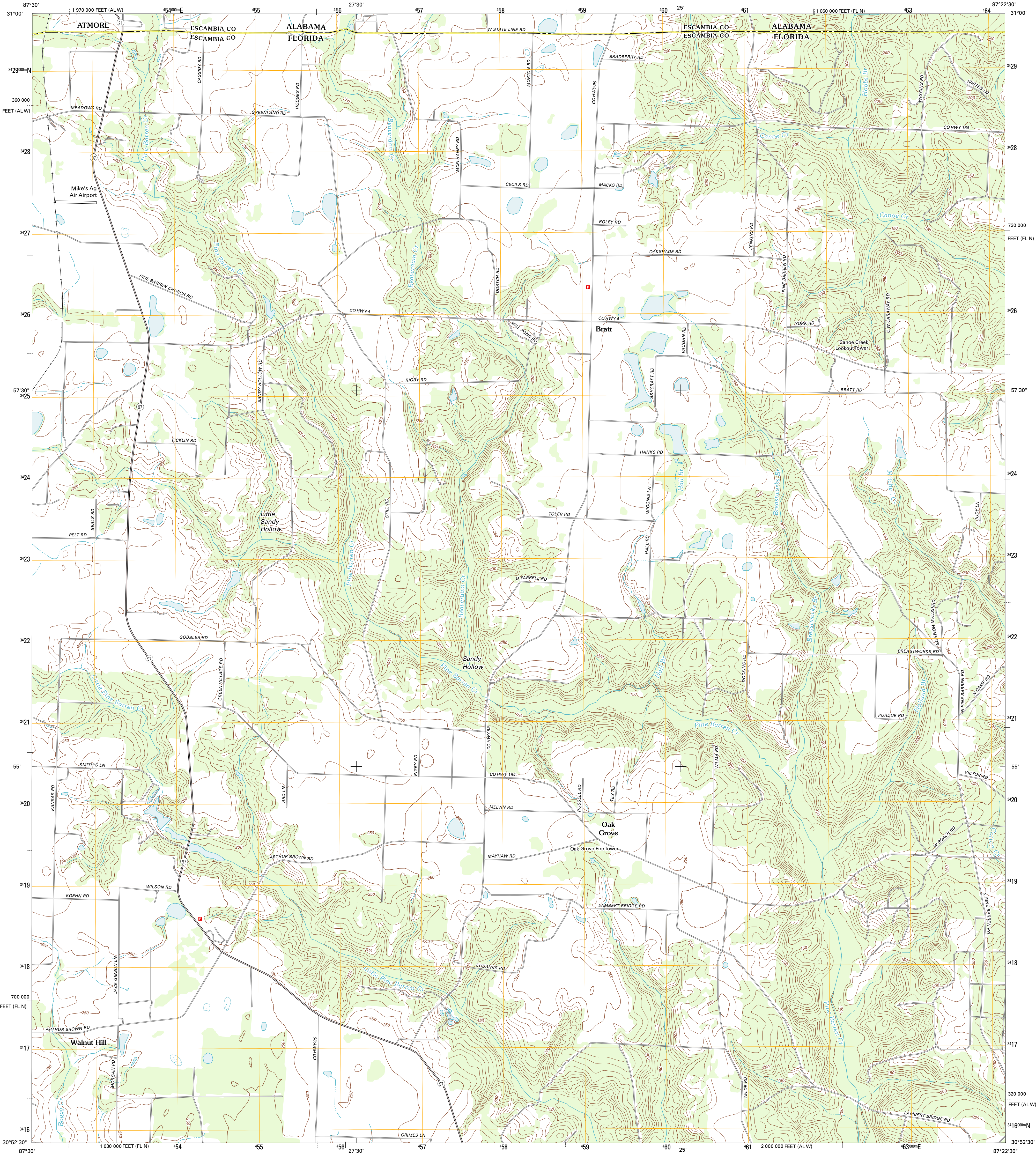




U.S. DEPARTMENT OF THE INTERIOR
U. S. GEOLOGICAL SURVEY

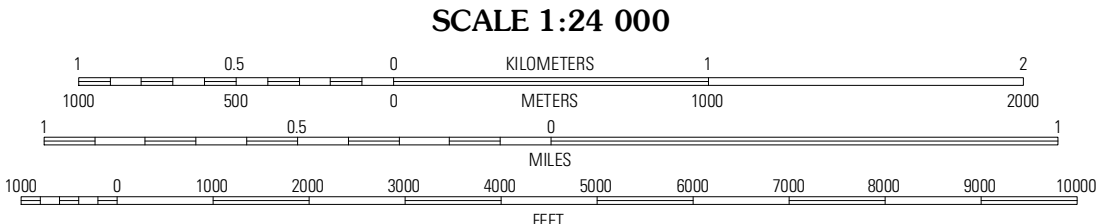
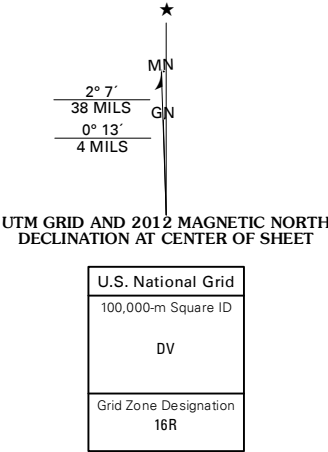


BRATT QUADRANGLE
FLORIDA-ALABAMA
7.5-MINUTE SERIES

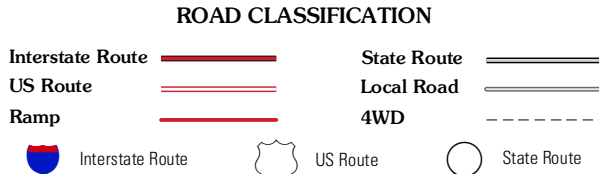
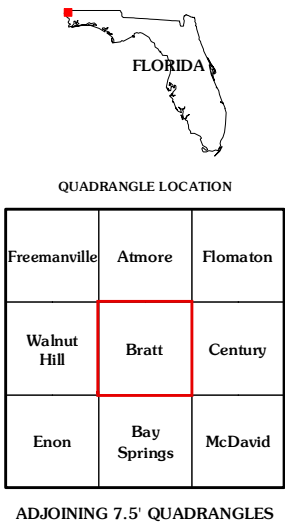


Produced by the United States Geological Survey
North American Datum of 1983 (NAD83)
World Geodetic System of 1984 (WGS84). Projection and
1 000-meter grid: Universal Transverse Mercator, Zone 16R
10 000-foot ticks: Florida Coordinate System of 1983 (north
zone), Alabama Coordinate System of 1983 (west zone)

Imagery:NAIP, September 2010
Roads:©2006-2011 TomTom
Names:GNIS, 2011
Hydrography:National Hydrography Dataset, 2010
Contours:National Elevation Dataset, 2009
Boundaries:Census, IBWC, IBC, USGS, 1972 - 2010



CONTOUR INTERVAL 10 FEET
NORTH AMERICAN VERTICAL DATUM OF 1988
This map was produced to conform with the
National Geospatial Program US Topo Product Standard, 2011.
A metadata file associated with this product is draft version 0.6.3



BRATT, FL-AL
2012