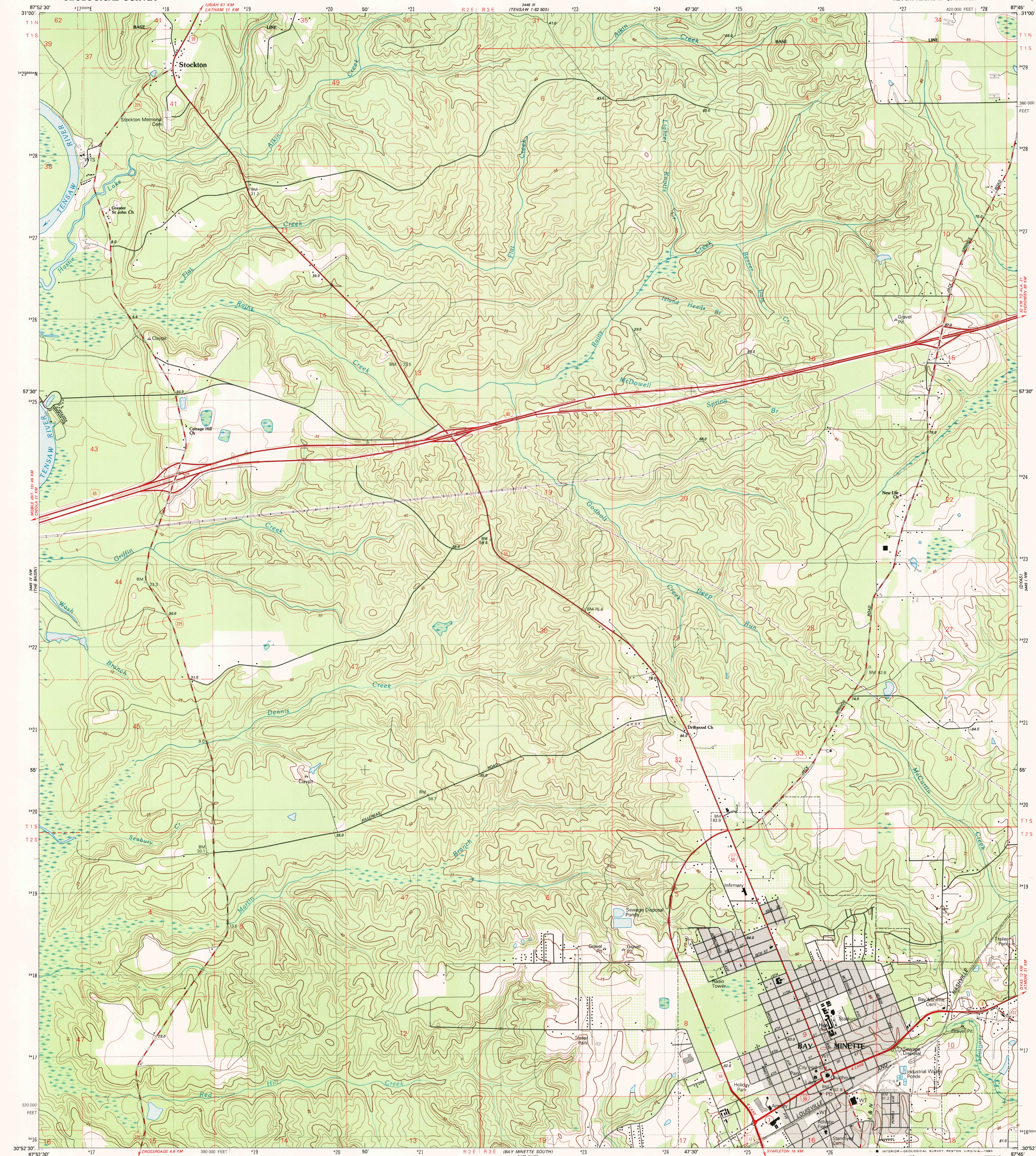


UNITED STATES  
DEPARTMENT OF THE INTERIOR  
GEOLOGICAL SURVEY

BAY MINETTE NORTH QUADRANGLE  
ALABAMA-BALDWIN CO.  
7.5 MINUTE SERIES (TOPOGRAPHIC)

NE 4 BAY MINETTE 15' QUADRANGLE

346 II  
(REVISED 1-25-80)



CONVERSION  
SCALES

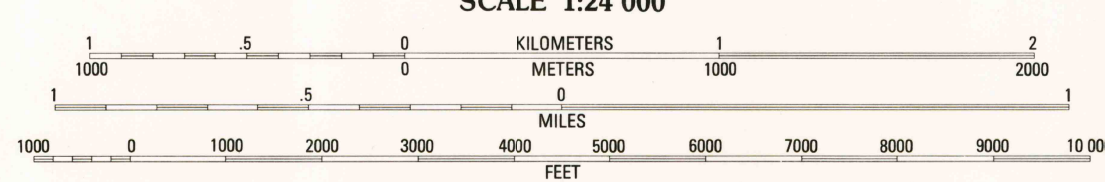
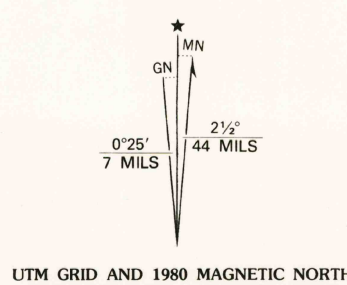


Feet	Meters
1	3048
2	6096
3	9144
4	12192
5	15240
6	18288
7	21336
8	24384
9	27432
10	30480

To convert feet to meters  
multiply by 3.048

To convert meters to feet  
multiply by 3.2808

Mapped, edited, and published by the Geological Survey  
Control by USGS, NOS/NOAA, Alabama Geodetic Survey, and  
Alabama State Highway Department  
Topography by photogrammetric methods from aerial photographs  
taken 1976. Field checked 1976. Map edited 1980  
Projection and 10,000-foot grid ticks: Alabama coordinate  
system, west zone (transverse Mercator)  
1000-meter Universal Transverse Mercator grid, zone 16  
1927 North American Datum  
To place on the predicted North American Datum 1983  
move the projection lines 16 meters south  
as shown by dashed corner ticks  
Fine red dashed lines indicate selected fence and field lines where  
generally visible on aerial photographs. This information is unchecked  
Gray tint indicates area in which only landmark buildings are shown  
Dotted land lines established by private survey



CONTOUR INTERVAL 5 METERS  
NATIONAL GEODETIC VERTICAL DATUM OF 1929  
CONTROL ELEVATIONS SHOWN TO THE NEAREST 0.1 METER  
OTHER ELEVATIONS SHOWN TO THE NEAREST METER

THIS MAP COMPLIES WITH NATIONAL MAP ACCURACY STANDARDS  
FOR SALE BY U. S. GEOLOGICAL SURVEY, RESTON, VIRGINIA 22092  
A FOLDER DESCRIBING TOPOGRAPHIC MAPS AND SYMBOLS IS AVAILABLE ON REQUEST

ALABAMA  
QUADRANGLE LOCATION  
CONTOURS AND ELEVATIONS  
IN METERS

ROAD CLASSIFICATION  
Primary highway, hard surface ..... Light-duty road, hard or improved surface .....  
Secondary highway, hard surface ..... Unimproved road .....  
Interstate Route U. S. Route State Route

BAY MINETTE NORTH, ALA.  
NE 4 BAY MINETTE 15' QUADRANGLE  
N3052.5-W8745.7.5

1980

DMA 3445 IV NE-SERIES V844