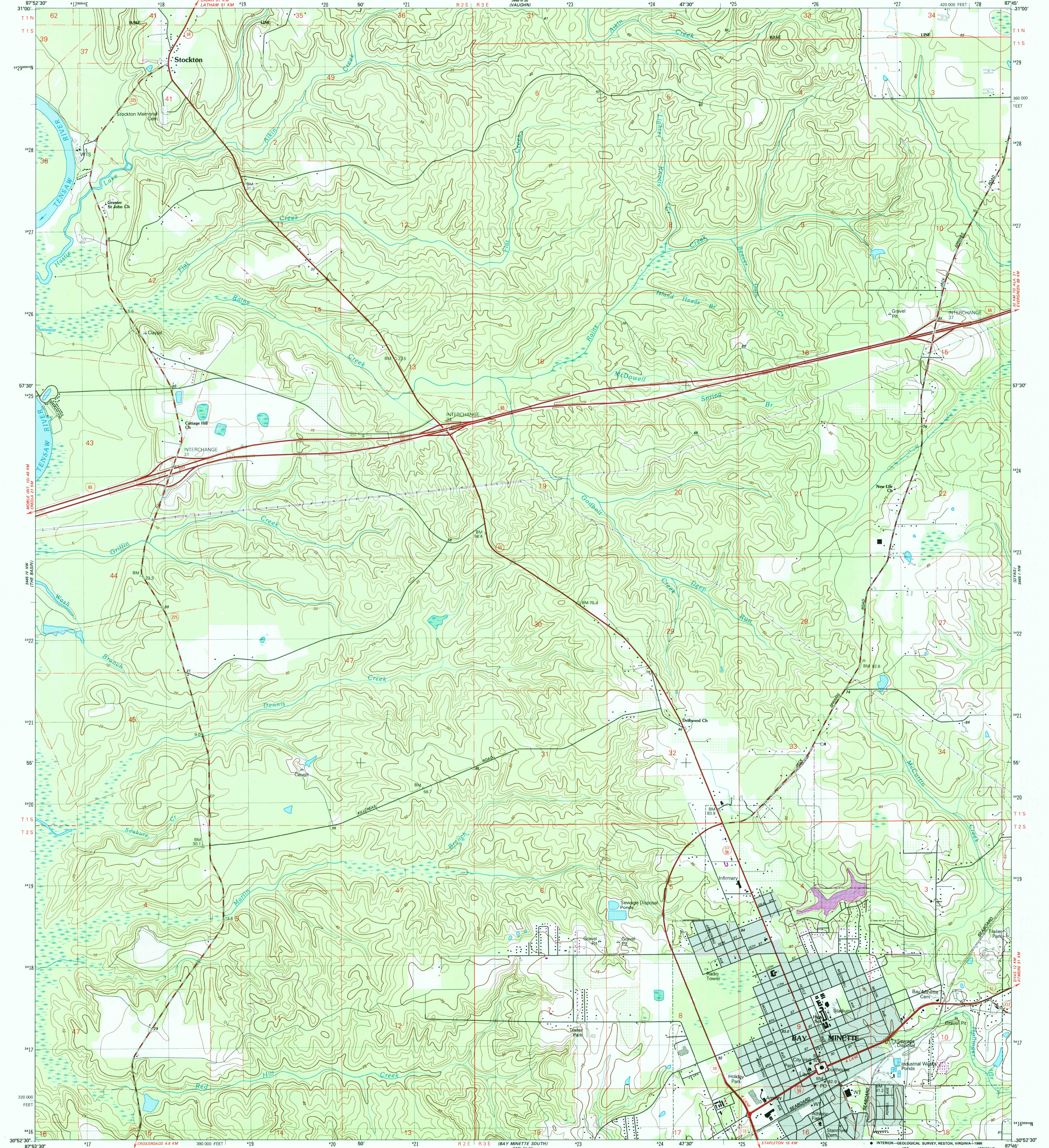


Scale in Feet
(Statute Miles)

UNITED STATES
DEPARTMENT OF THE INTERIOR
GEOLOGICAL SURVEY

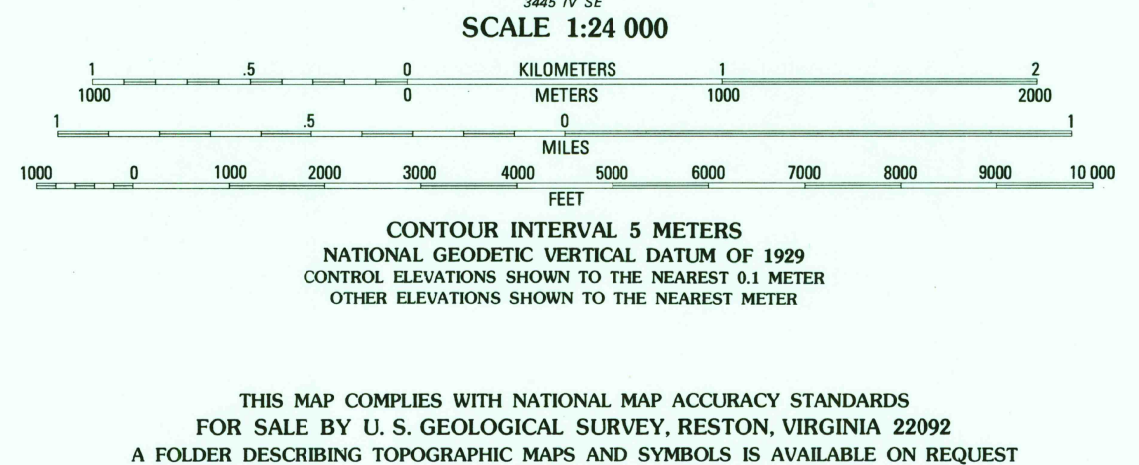
BAY MINETTE NORTH QUADRANGLE
ALABAMA-BALDWIN CO.
7.5 MINUTE SERIES (TOPOGRAPHIC)
NE 1/4 BAY MINETTE 15' QUADRANGLE

Scale in Feet
(Statute Miles)



Mapped, edited, and published by the Geological Survey
Control by USGS, NOS/NOAA, Alabama Geodetic Survey, and
Alabama State Highway Department
Topography by photogrammetric methods from aerial photographs
taken 1976. Field checked 1976. Map edited 1980
Projection and 10,000-foot grid ticks: Alabama coordinate
system, west zone (transverse Mercator)
1000-meter Universal Transverse Mercator grid, zone 16
1927 North American Datum
To place on the predicted North American Datum 1983
move the projection lines 16 meters south
as shown by dashed corner ticks
Fine red dashed lines indicate selected fence and field lines where
generally visible on aerial photographs. This information is unchecked
Gray tint indicates area in which only landmark buildings are shown
Dotted land lines established by private survey

Revisions shown in purple and woodland compiled from
aerial photographs taken 1981 and other sources. This
information not field checked. Map edited 1985



ROAD CLASSIFICATION

Primary highway, hard surface	Light-duty road, hard or improved surface
Secondary highway, hard surface	Unimproved road
Interstate Route	U. S. Route
	State Route

QUADRANGLE LOCATION

ALABAMA

USGS NMD HISTORICAL MAP

JUL 29 1986

REC'D FILE COPY

BAY MINETTE NORTH, ALA.
NE 1/4 BAY MINETTE 15' QUADRANGLE
30087-H7-TM-024

1980
PHOTOREVISED 1985
DMA 3445 IV NE-SERIES V844

THIS MAP COMPLIES WITH NATIONAL MAP ACCURACY STANDARDS
FOR SALE BY U. S. GEOLOGICAL SURVEY, RESTON, VIRGINIA 22092
A FOLDER DESCRIBING TOPOGRAPHIC MAPS AND SYMBOLS IS AVAILABLE ON REQUEST