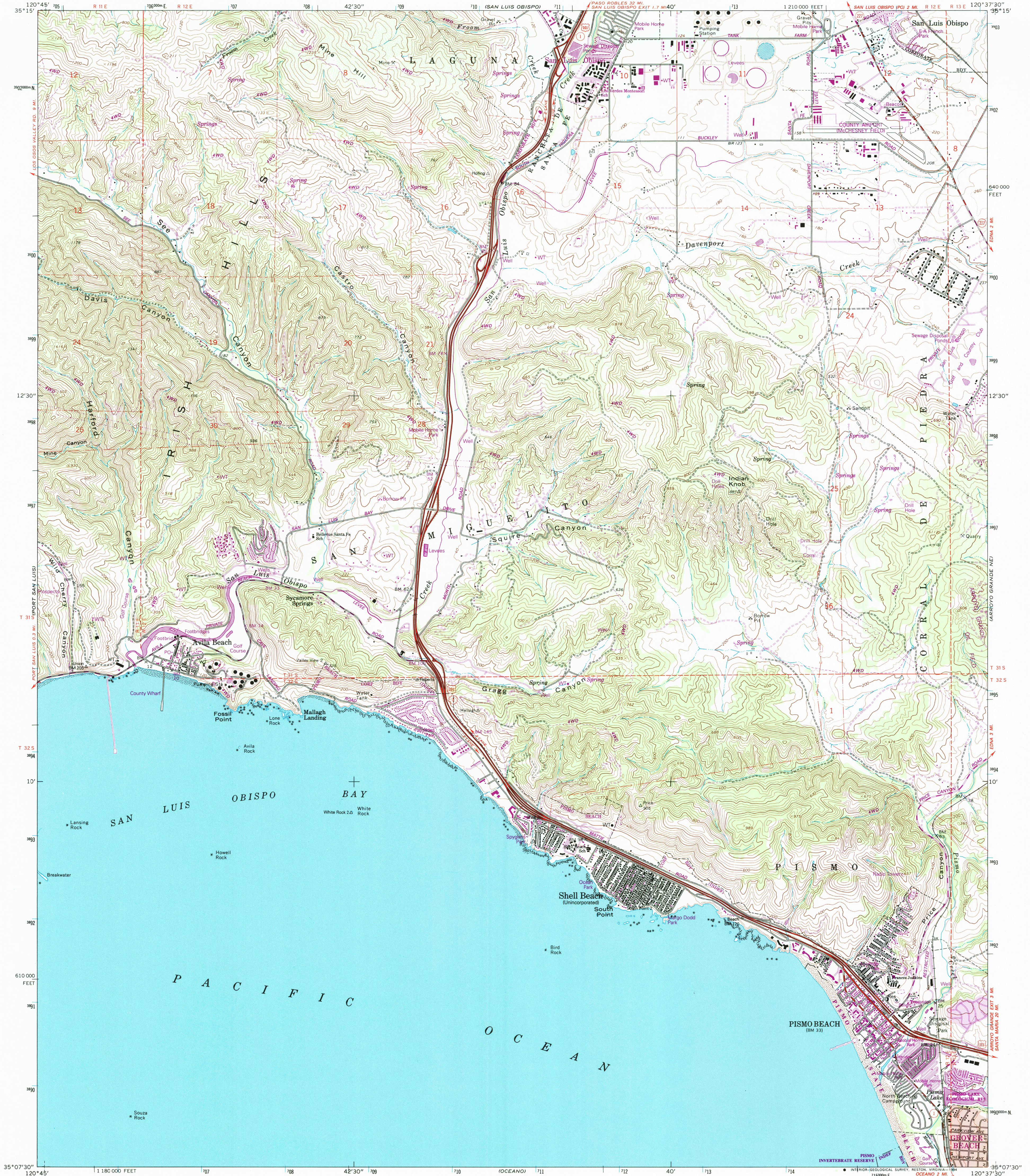


UNITED STATES
DEPARTMENT OF THE INTERIOR
GEOLOGICAL SURVEY

PISMO BEACH QUADRANGLE
CALIFORNIA-SAN LUIS OBISPO CO.
7.5 MINUTE SERIES (TOPOGRAPHIC)



Produced by the United States Geological Survey
in cooperation with California Department of
Water Resources
Control by USGS, NOS/NOAA and Calif. Dept. of Transportation
Compiled from aerial photographs taken 1963. Revisions shown
in purple compiled from aerial photographs taken 1987 and 1988
and other sources and have been field checked. Map edited 1994
Conflicts may exist between some updated features and previously
mapped contours
North American Datum of 1927 (NAD 27). Projection and
10000-foot ticks : California Coordinate System, zone 5
(Lambert Conformal Conic)
Blue 1000-meter Universal Transverse Mercator ticks, zone 10
North American Datum of 1983 (NAD 83) is shown by dashed
corner ticks. The values of the shift between NAD 27 and NAD 83
for 7.5-minute intersections are given in USGS Bulletin 1875

There may be private inholdings within the boundaries of the
National or State reservations shown on this map
Fine red dashed lines indicate selected fence lines
Where omitted, land lines have not been established

SCALE 1:24,000
1 1000 0 1000 2000 3000 4000 5000 6000 7000 FEET
1 5 0 1 KILOMETER
CONTOUR INTERVAL 40 FEET
SUPPLEMENTARY CONTOUR INTERVAL 20 FEET
NATIONAL GEODETIC VERTICAL DATUM OF 1929
SHORELINE SHOWN REPRESENTS THE APPROXIMATE LINE OF MEAN HIGH WATER
THE MEAN RANGE OF TIDE IS APPROXIMATELY 4 FEET
THIS MAP COMPLIES WITH NATIONAL MAP ACCURACY STANDARDS
FOR SALE BY U.S. GEOLOGICAL SURVEY
DENVER, COLORADO 80225, OR RESTON, VIRGINIA 22092
A FOLDER DESCRIBING TOPOGRAPHIC MAPS AND SYMBOLS IS AVAILABLE ON REQUEST

ROAD CLASSIFICATION
Heavy-duty ——— Light-duty ———
Medium-duty ——— Unimproved dirt ———
U. S. Route ——— State Route ———
PISMO BEACH, CALIF.
35120-B6-TF-024
1965
REVISED 1994
DMA 1854 II NW-SERIES V895