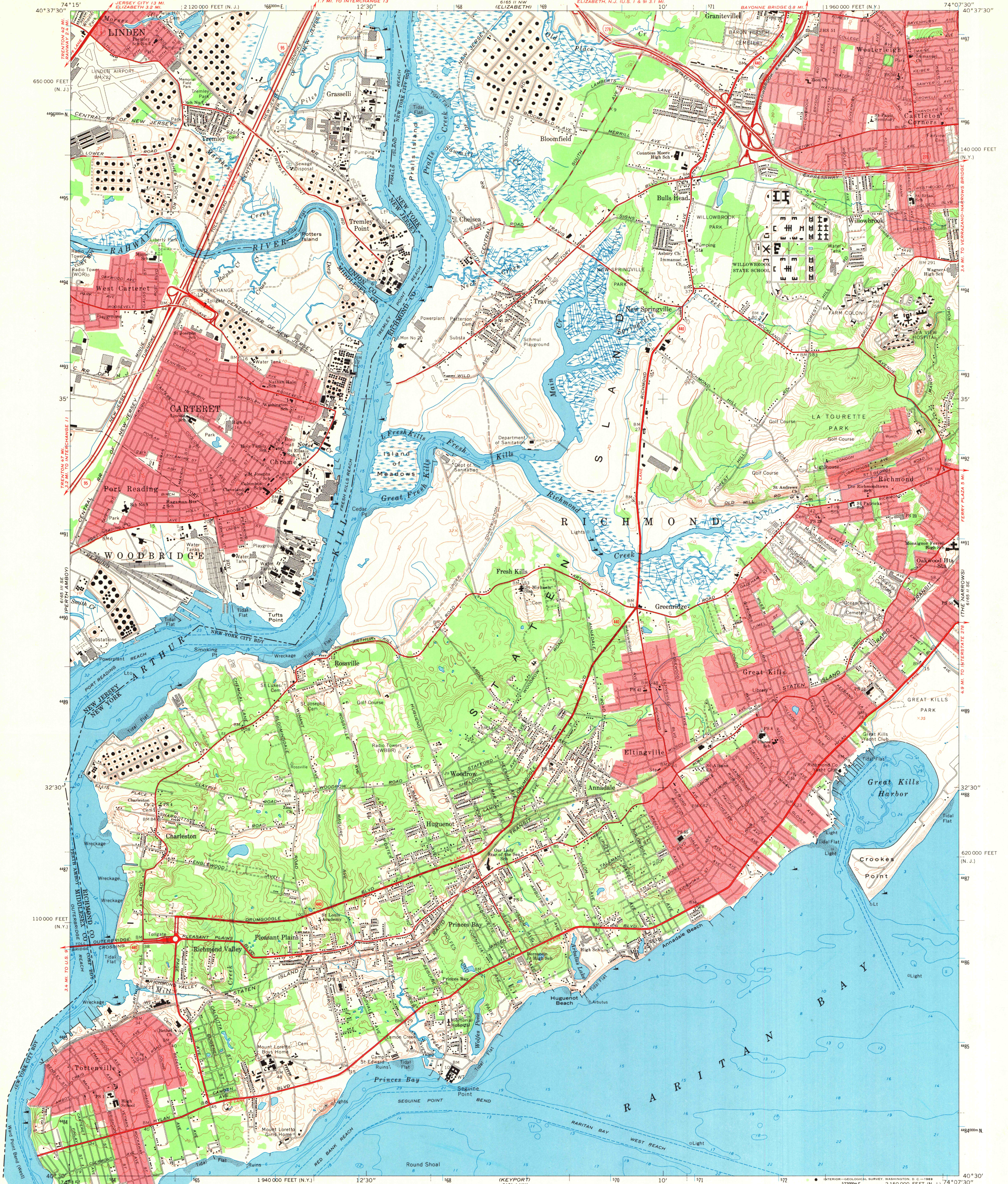
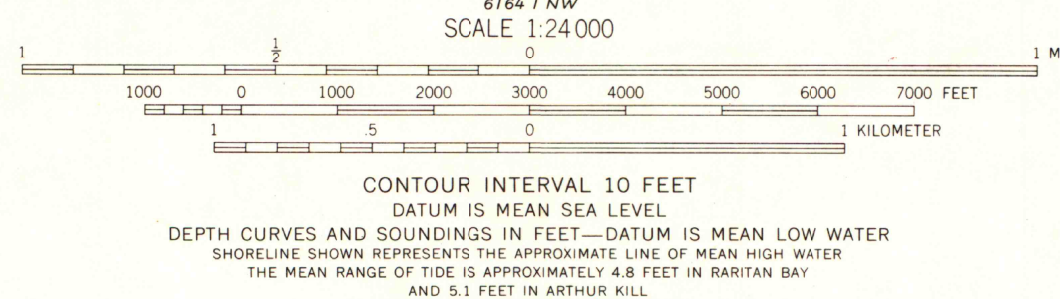
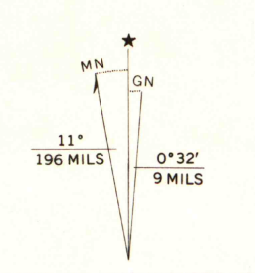


UNITED STATES  
DEPARTMENT OF THE INTERIOR  
GEOLOGICAL SURVEY

ARTHUR KILL QUADRANGLE  
NEW YORK NEW JERSEY  
7.5 MINUTE SERIES (TOPOGRAPHIC)



Mapped, edited, and published by the Geological Survey  
Revised in cooperation with New York Department  
of Transportation  
Control by USGS, USC&GS, and USCE  
Planimetry by photogrammetric methods from aerial photographs and  
from USC&GS Charts 15105, 15106, 15107, 15108, 15109, 15110,  
and 15540. Topography in New York by photogrammetric  
methods from aerial photographs taken 1954. Field checked 1955  
Topography in New Jersey by planimetric survey 1955  
Revised from aerial photographs taken 1966. Field checked 1966  
Selected hydrographic data compiled from USC&GS Charts 285 (1966)  
286 (1966), and 369 (1967). This information is not intended for  
navigational purposes  
Polyconic projection. 1927 North American datum  
10,000-foot grid based on New York coordinate system.  
Long Island zone, and New Jersey coordinate system  
1000-meter Universal Transverse Mercator grid ticks,  
zone 18, shown in blue  
Red tint indicates areas in which only landmark buildings are shown



ROAD CLASSIFICATION

Heavy-duty	Light-duty
Medium-duty	Unimproved dirt
Interstate Route	U.S. Route
	State Route

ARTHUR KILL N.Y. - N.J.  
N4030-W7407.577.5  
1966  
AMS 6165 II SW-SERIES V821