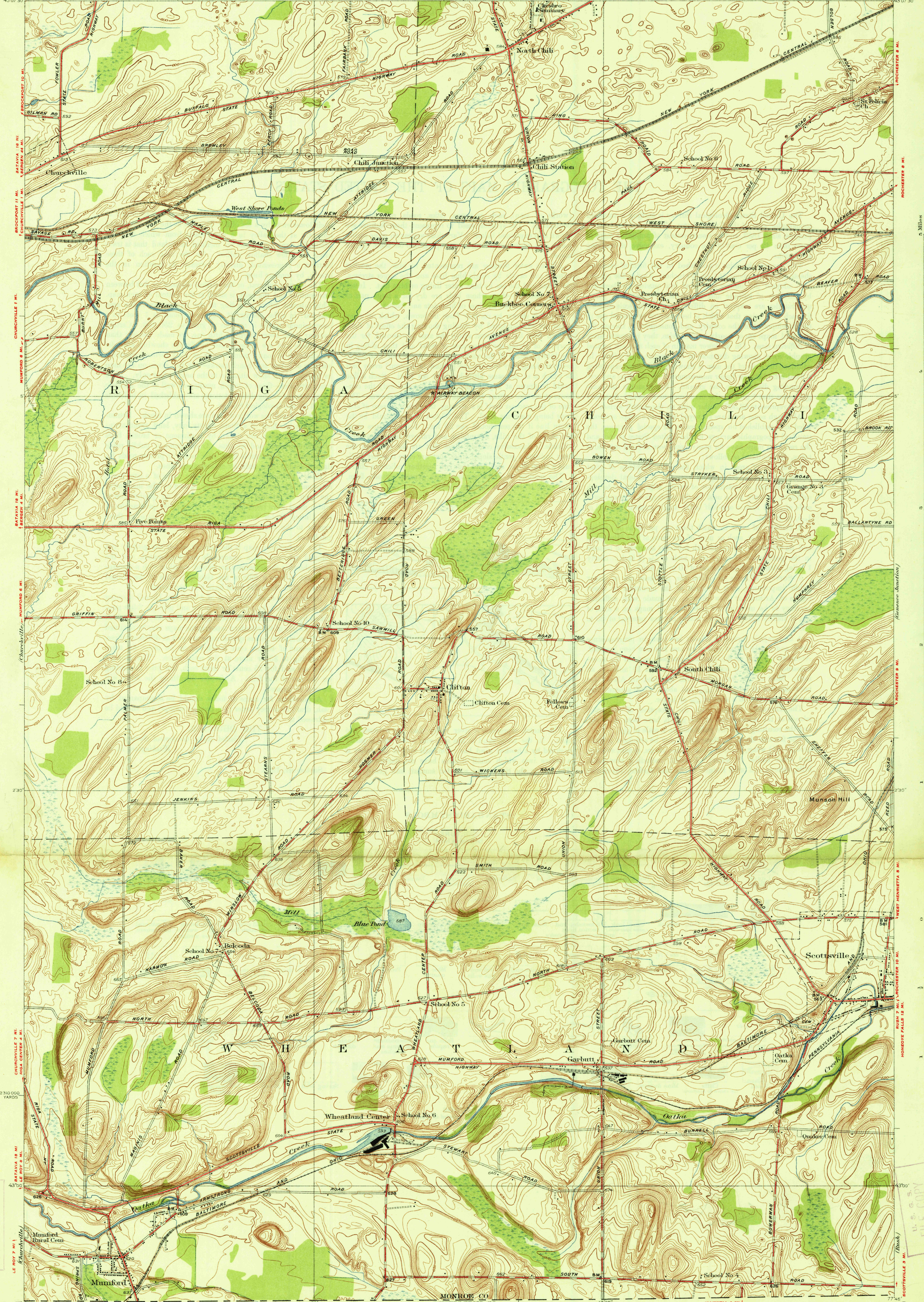


U.S.G.S.
FILE COPY
Inspection and Editing.

NEW YORK
(MONROE COUNTY)
CLIFTON QUADRANGLE

DEPARTMENT OF THE INTERIOR
U.S. GEOLOGICAL SURVEY
ADAMS BASIN 5 MI. SPENCERPORT 7 MI.



Topography by H.B. Smith
Culture and drainage compiled from aerial photographs
Control by U.S. Geological Survey and
Buffalo, Rochester, and Pittsburgh Railroad
Surveyed in 1932

Scale 1:50,000
Contour interval 5 feet
Datum is mean sea level

Historical File
Topographic Division
CLIFTON, N.Y.
Edition of 1934
2555:4420:1/44

U.S.G.S.
FILE COPY
Inspection and Editing.

OCT 12 1934 (3430)