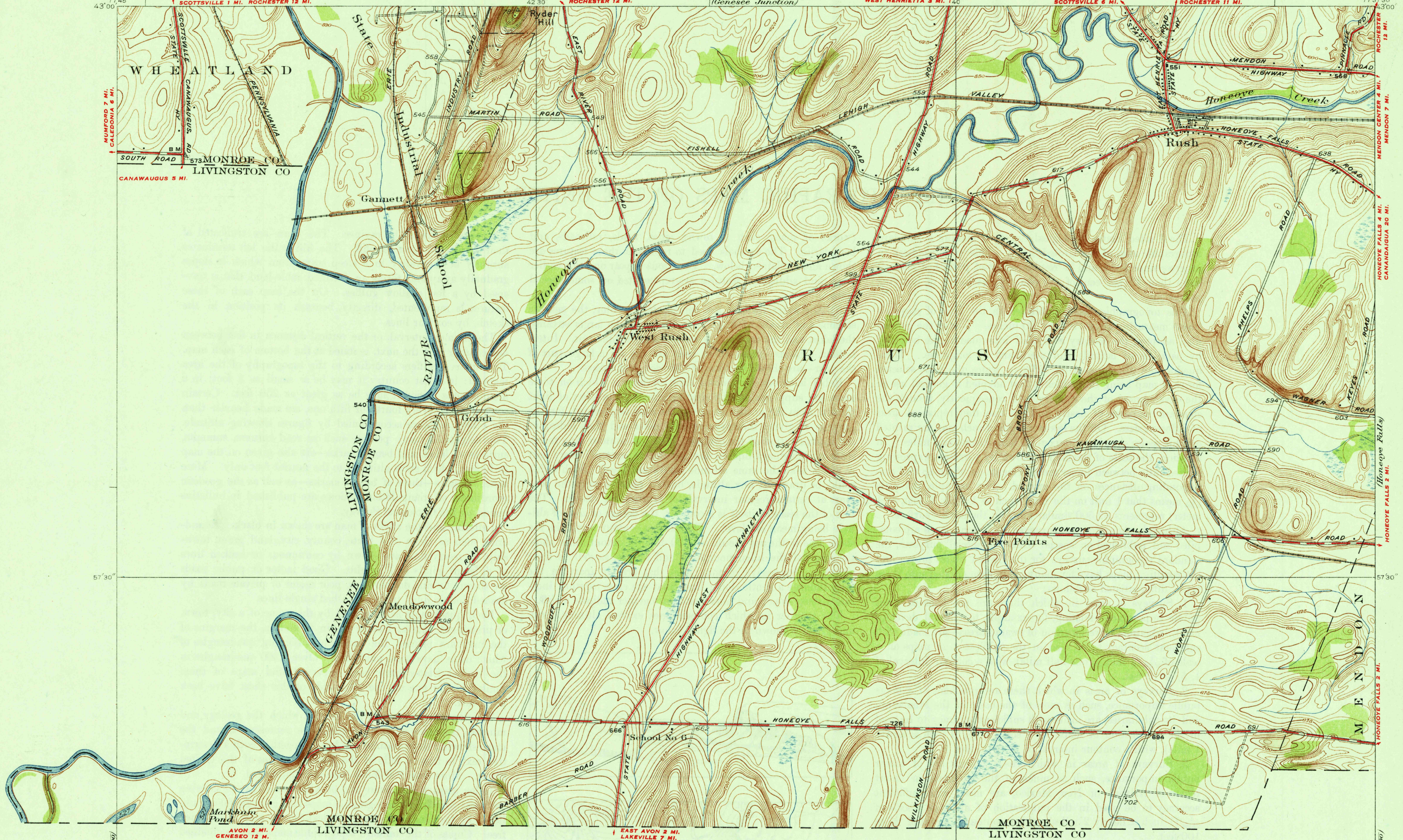


MONROE COUNTY, NEW YORK
REGIONAL PLANNING BOARD
DONALD S. BARROWS, CHAIRMAN, HAROLD G. DOBSON, VICE CHAIRMAN
ANDREW H. BOWN, ESTEN A. FLETCHER, FRANK W. MOFFETT, GEORGE C. WRIGHT
J. FRANKLIN BONNER, SECRETARY
ROY P. WARREN, ENGINEER

U.S. G.
FILE COPY
Inspection and Editing

NEW YORK
(MONROE COUNTY)
RUSH QUADRANGLE

DEPARTMENT OF THE INTERIOR
U.S. GEOLOGICAL SURVEY



THIS AREA IS SHOWN ON THE MAP OF HONEOYE
QUADRANGLE SURVEYED IN 1901, SCALE 1:62500

Topography by H.F. Ewing
Culture and drainage in part compiled from aerial photographs
Control by U.S. Geological Survey and U.S. Lake Survey
Surveyed in 1931

Scale 1:62500
Contour interval 5 feet
Datum is mean sea level

USGS
Historical File
Topographic Division

Polyconic projection, North American datum
5000 yard grid based upon U.S. zone system B
OTHER MAIN TRAVELED ROADS
RUSH, N.Y.
Edition of 1934
2655:4355/79

OCT 19 1934 (2425)