

DEPARTMENT OF THE INTERIOR
U. S. GEOLOGICAL SURVEY

RETAINED COPY
This sheet must not be taken from
the files without an order from the
Chief Topographic Engineer

818-N-1-W-2-NW/4
STATE OF VIRGINIA
CONSERVATION AND DEVELOPMENT COMMISSION
VIRGINIA GEOLOGICAL SURVEY
ARTHUR C. BEVAN, STATE GEOLOGIST
(Monterey 125000)

Advance sheet
Subject to correction

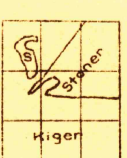
FALLING SPRING BARBER QUADRANGLE

VIRGINIA

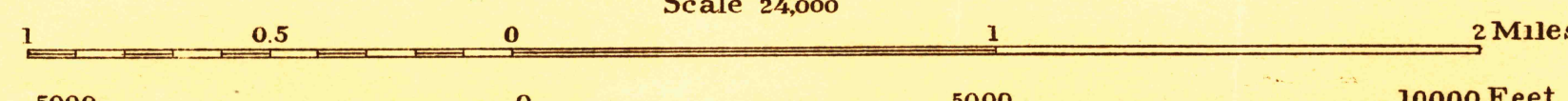
(Monterey 125000)



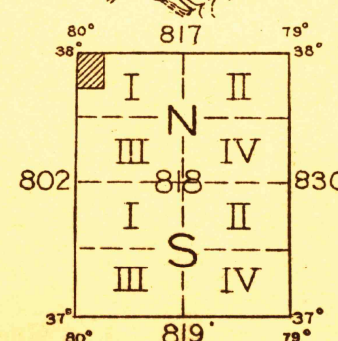
Albert Pike, Division Engineer
Topography by R.A. Kiger and S.N. Stoner
Control by U. S. Geological Survey
Surveyed in 1928-1929



APPROXIMATE MEAN
DECLINATION, 1929



Contour interval 20 feet
Datum is mean sea level



Polyconic projection, North American datum
5000 yard grid based upon U. S. zone system, B
FILE COPY
RETURN TO CENTRAL FILE

HISTORICAL FILES
(DO NOT REMOVE)

FALLING SPRING BARBER, VA