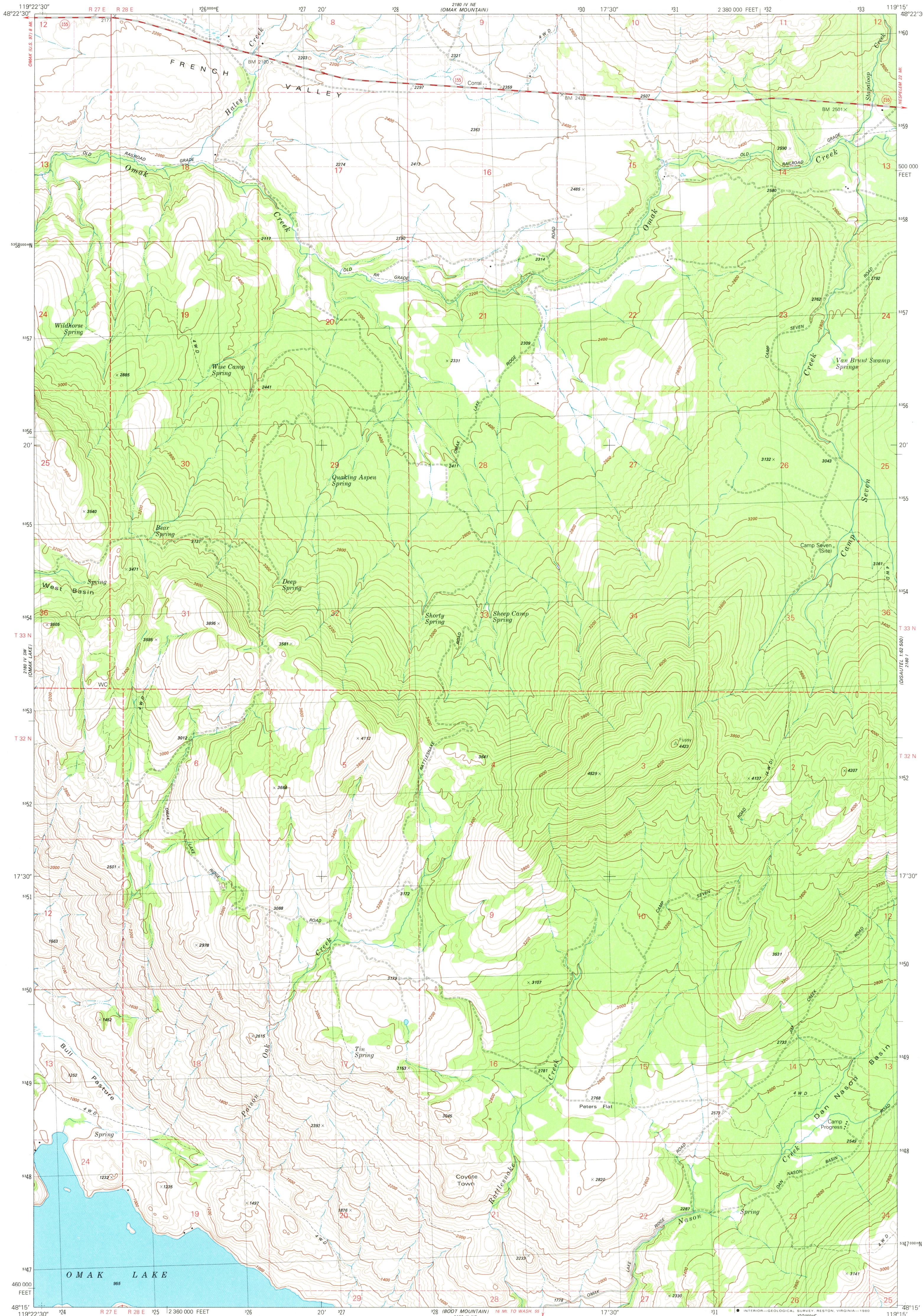


26° 14' N
(THE ARK)

UNITED STATES
DEPARTMENT OF THE INTERIOR
GEOLOGICAL SURVEY

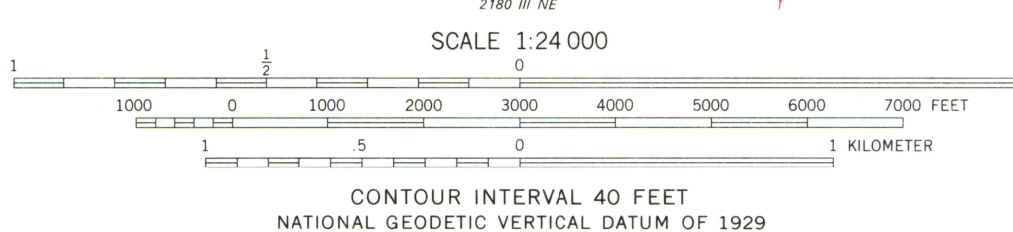
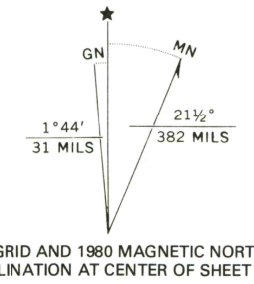
CAMP SEVEN QUADRANGLE
WASHINGTON-OKANOGAN CO.
7.5 MINUTE SERIES (TOPOGRAPHIC)

26° 14' N
(THE ARK)



Mapped, edited, and published by the Geological Survey

Control by U.S. and NOS/NOAA
Topography by photogrammetric methods from aerial photographs taken 1973. Field checked 1975. Map edited 1980
Projection and 10,000-foot grid ticks: Washington coordinate system, north zone (Lambert conformal conic)
1000-meter Universal Transverse Mercator grid, zone 11
1927 North American Datum
To place on the predicted North American Datum 1983 move the projection lines 18 meters north and 85 meters east as shown by dashed corner ticks
Entire area lies within the boundary of the Colville Indian Reservation
There may be private inholdings within the boundaries of the National or State reservations shown on this map



ROAD CLASSIFICATION

Primary highway, hard surface	Light-duty road, hard or improved surface
Secondary highway, hard surface	Unimproved road
Interstate Route	U.S. Route
	State Route

CAMP SEVEN, WASH.
SE/4 OKAM LAKE 15' QUADRANGLE
N4815-W1915/7.5

1980

DMA 2180 IV SE-SERIES V891