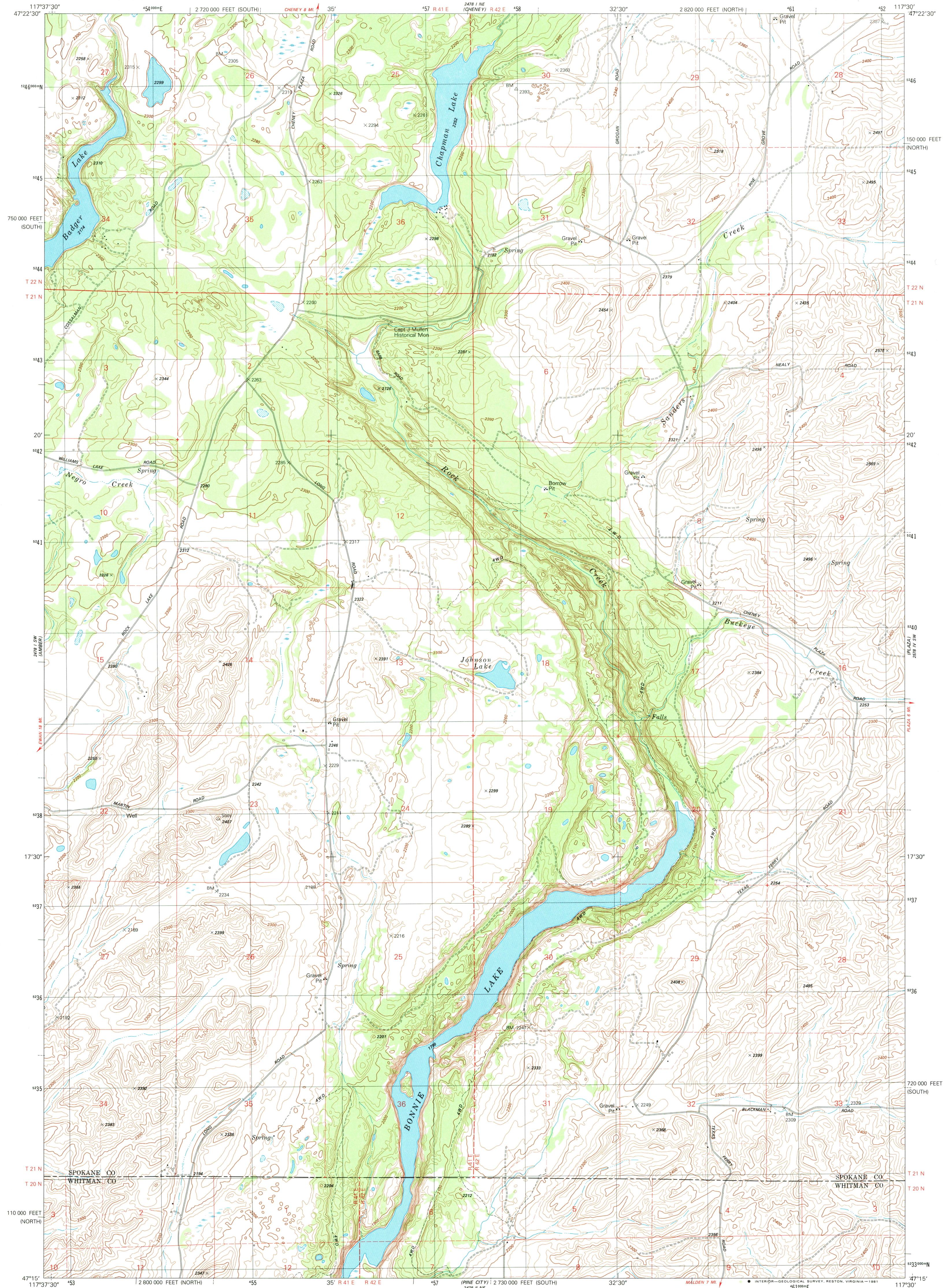


2478 1 NW
(ADJACENT SHEET)

UNITED STATES
DEPARTMENT OF THE INTERIOR
GEOLOGICAL SURVEY

CHAPMAN LAKE QUADRANGLE
WASHINGTON
7.5 MINUTE SERIES (TOPOGRAPHIC)
SE/4 CHENEY 15' QUADRANGLE

2478 1 NE
(ADJACENT SHEET)



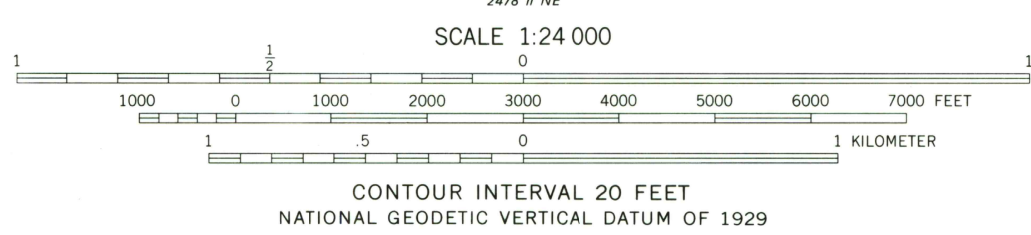
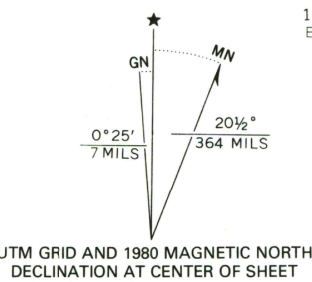
2478 1 SW
(ADJACENT SHEET)

Mapped, edited, and published by the Geological Survey

Control by USGS and NOS/NOAA

Topography by photogrammetric methods from aerial
photographs taken 1952. Field checked 1954
Revised from aerial photographs taken 1975
Limited field check 1976. Map edited 1980

Projection: Washington coordinate system, north zone
(Lambert conformal conic)
10,000-foot grid ticks based on Washington coordinate system,
north and south zones
1000-meter Universal Transverse Mercator grid, zone 11
1927 North American Datum
To place on the predicted North American Datum 1983
move the projection lines 16 meters north and
80 meters east as shown by dashed corner ticks



ROAD CLASSIFICATION		
Primary highway, hard surface	Light-duty road, hard or improved surface	
Secondary highway, hard surface	Unimproved road	
Interstate Route	U. S. Route	State Route

CHAPMAN LAKE, WASH.
SE/4 CHENEY 15' QUADRANGLE
N4715-W11730/7.5

1980

DMA 2478 1 SE—SERIES V891

2478 1 NE
(ADJACENT SHEET)