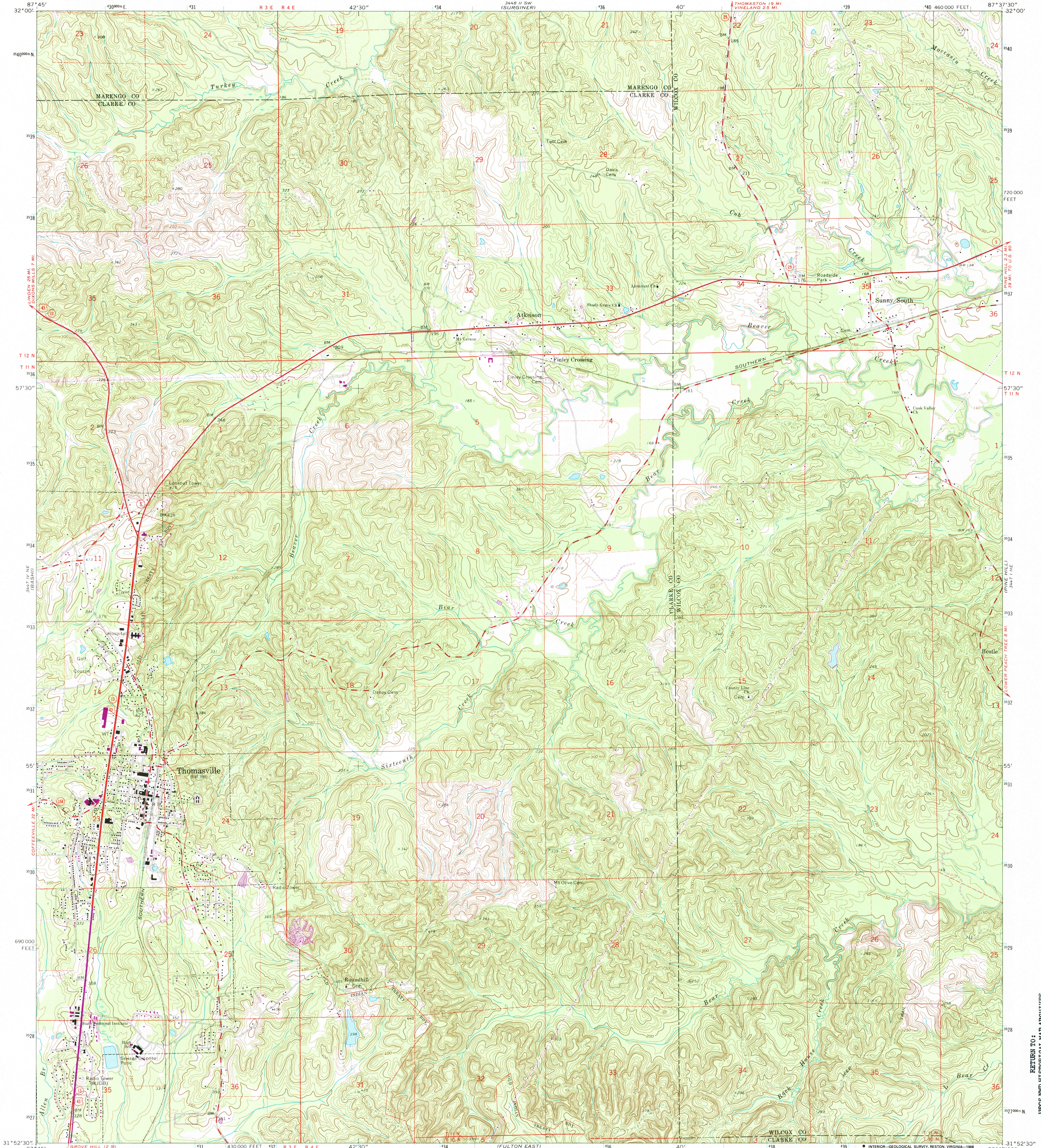


UNITED STATES  
DEPARTMENT OF THE INTERIOR  
GEOLOGICAL SURVEY

THOMASVILLE QUADRANGLE  
ALABAMA  
7.5 MINUTE SERIES (TOPOGRAPHIC)



Mapped, edited, and published by the Geological Survey

Control by USGS and NOS/NOAA

Topography by photogrammetric methods from aerial photographs taken 1972. Field checked 1973

Projection and 10,000-foot grid ticks: Alabama coordinate system, west zone (transverse Mercator)

1000-meter Universal Transverse Mercator grid ticks, zone 15, shown in blue

1927 North American Datum

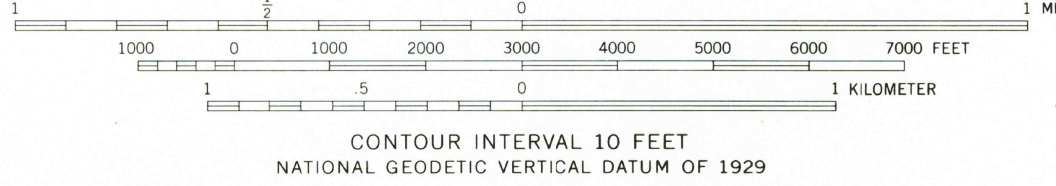
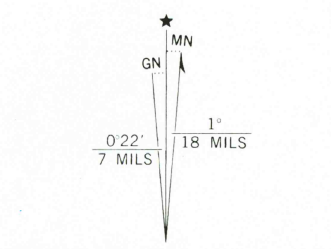
To place on the predicted North American Datum 1983

move the projection lines 14 meters south

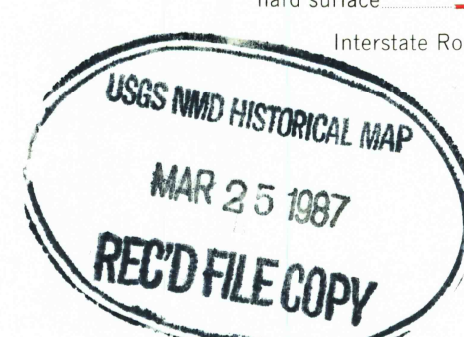
as shown by dashed corner ticks

Five red dashed lines indicate selected fence and field lines where generally visible on aerial photographs. This information is unchecked

Revisions shown in purple and woodland compiled from aerial photographs taken 1984 and other sources. This information not field checked. Map edited 1986



THIS MAP COMPLIES WITH NATIONAL MAP ACCURACY STANDARDS  
FOR SALE BY U. S. GEOLOGICAL SURVEY, RESTON, VIRGINIA 22092  
A FOLDER DESCRIBING TOPOGRAPHIC MAPS AND SYMBOLS IS AVAILABLE ON REQUEST



ROAD CLASSIFICATION  
Primary highway, hard surface  
Secondary highway, hard surface  
Interstate Route  
Light-duty road, hard or improved surface  
Unimproved road  
U. S. Route  
State Route

THOMASVILLE, ALA.  
31087-H6-TF-024

1973  
PHOTOREVISED 1986  
DMA 3447 1 NW - SERIES V844

RETURN TO:  
USGS NHD HISTORICAL MAP ARCHIVES