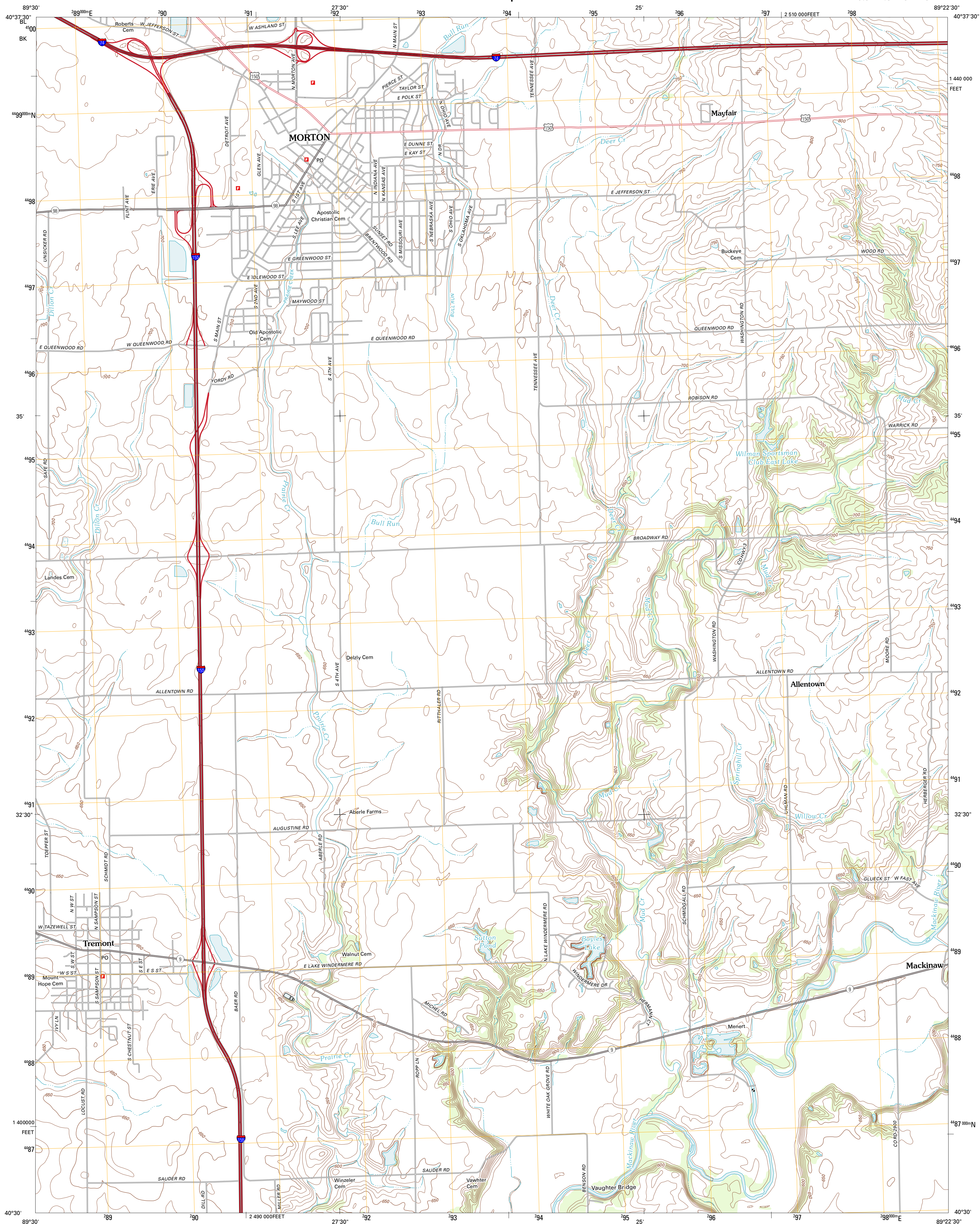




U.S. DEPARTMENT OF THE INTERIOR  
U. S. GEOLOGICAL SURVEY

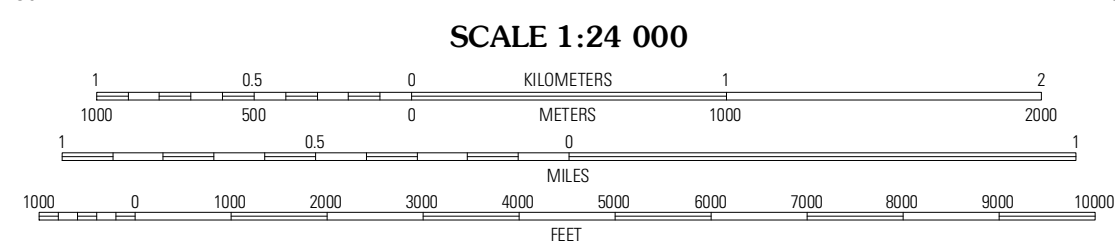
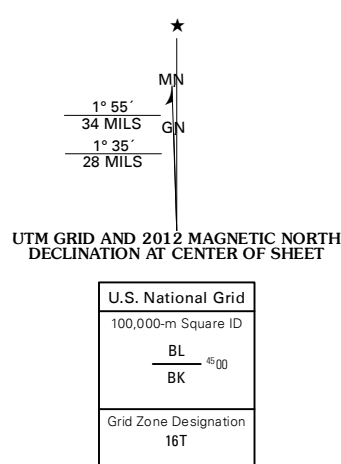


**MORTON QUADRANGLE**  
**ILLINOIS-TAZEWELL CO.**  
**7.5-MINUTE SERIES**



Produced by the United States Geological Survey  
North American Datum of 1983 (NAD83)  
World Geodetic System of 1984 (WGS84). Projection and  
1 000-meter grid: Universal Transverse Mercator, Zone 16T  
10 000-foot ticks: Illinois Coordinate System of 1983 (west  
zone)

Imagery.....NAIP, August 2011  
Roads.....©2006-2011 TomTom  
Names.....GNIS, 2011  
Hydrography.....National Hydrography Dataset, 2011  
Contours.....National Elevation Dataset, 2012  
Boundaries.....Census, IBWC, IBC, USGS, 1972 - 2010



CONTOUR INTERVAL 10 FEET  
NORTH AMERICAN VERTICAL DATUM OF 1988

This map was produced to conform with the National Geospatial Program US Topo Product Standard, 2011. A metadata file associated with this product is draft version 0.6.3






QUADRANGLE LOCATION

Peoria East	Washington	Eureka
Marquette Heights	Morton	Mackinaw
Delavan North	Hopedale	Minier

ADJOINING 7.5' QUADRANGLES

### ROAD CLASSIFICATION

**Interstate Route**  **State Route**   
**US Route**  **Local Road**   
**Ramp**  **4WD** 

 Interstate Route   
  US Route   
  State Route

MORTON, IL  
2012