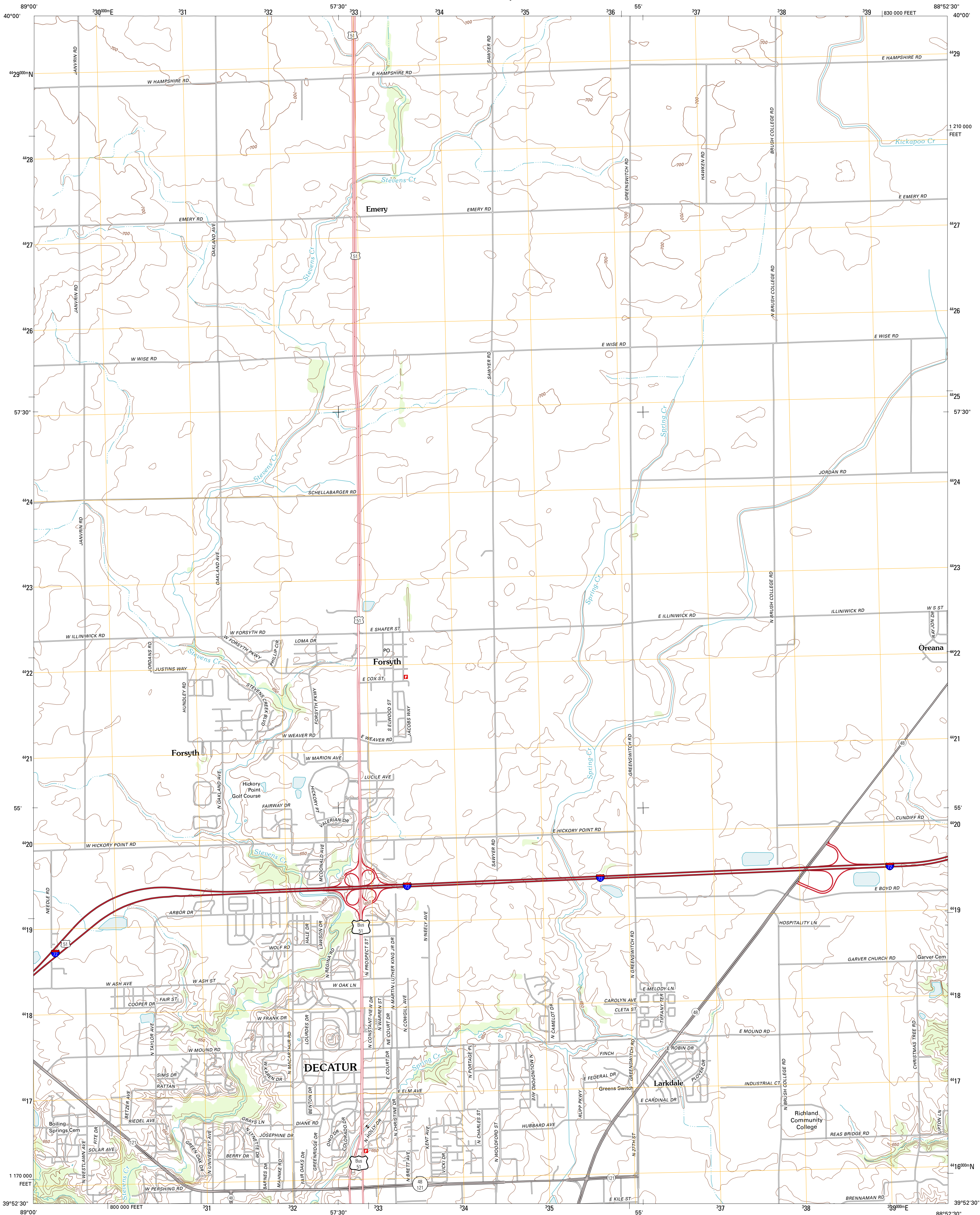




U.S. DEPARTMENT OF THE INTERIOR
U. S. GEOLOGICAL SURVEY

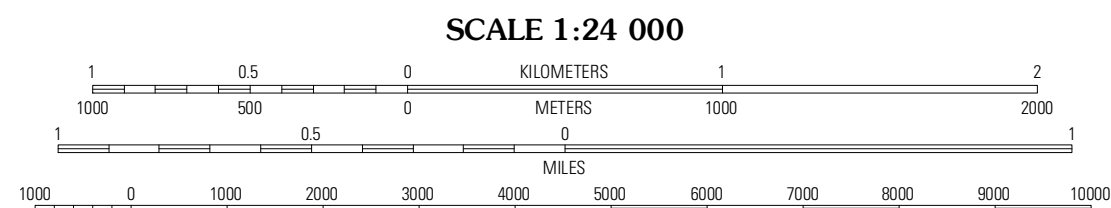


FORSYTH QUADRANGLE
ILLINOIS-MACON CO.
7.5-MINUTE SERIES



Produced by the United States Geological Survey
North American Datum of 1983 (NAD83)
World Geodetic System of 1984 (WGS84). Projection and
1 000-meter grid: Universal Transverse Mercator, Zone 16S
10 000-foot ticks: Illinois Coordinate System of 1983 (east
zone)

UTM GRID AND 2012 MAGNETIC NORTH
DECLINATION AT CENTER OF SHEET



CONTOUR INTERVAL 10 FEET
NORTH AMERICAN VERTICAL DATUM OF 1988

This map was produced to conform with the
National Geospatial Program US Topo Product Standard, 2011.
A metadata file associated with this product is draft version 0.6.3



ROAD CLASSIFICATION

Interstate Route
US Route
Ramp
State Route
Local Road
4WD
US Route
State Route

QUADRANGLE LOCATION		
Kennedy	Maroa	Weldon West
Warrensburg	Forsyth	Argenta
Harristown	Decatur	Long Creek

ADJOINING 7.5 QUADRANGLES

FORSYTH, IL
2012