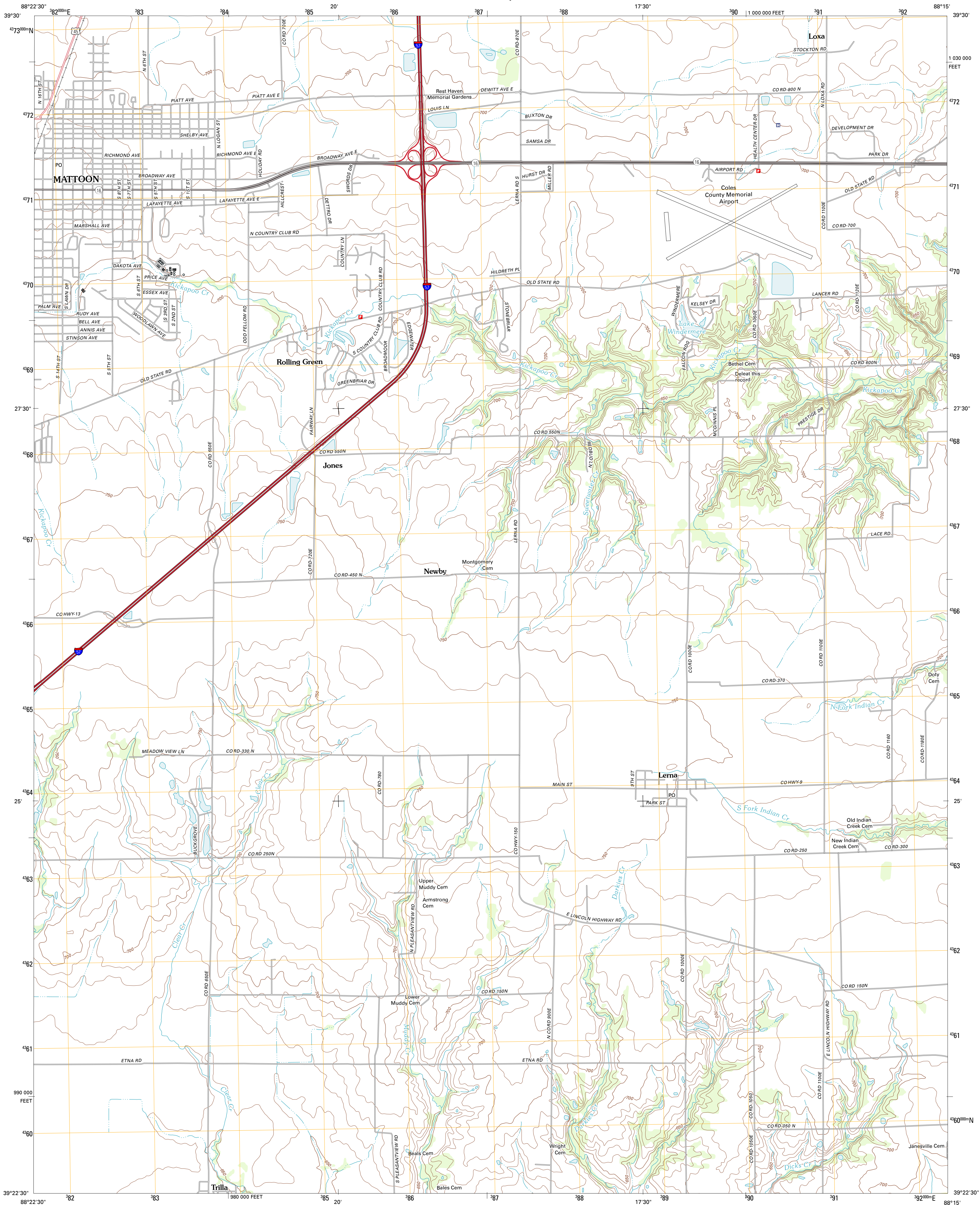




U.S. DEPARTMENT OF THE INTERIOR
U. S. GEOLOGICAL SURVEY



MATTOON EAST QUADRANGLE
ILLINOIS-COLES CO.
7.5-MINUTE SERIES

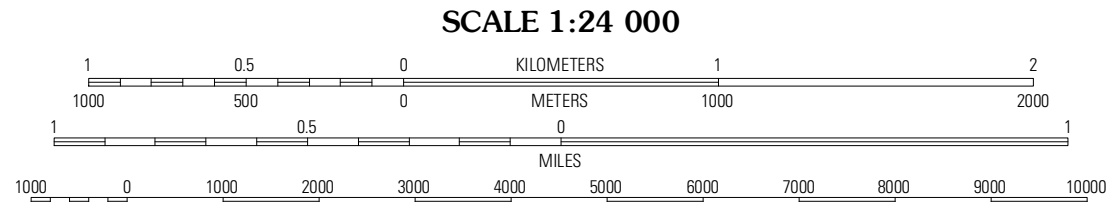


Produced by the United States Geological Survey
North American Datum of 1983 (NAD83)
World Geodetic System of 1984 (WGS84). Projection and
1 000-meter grid: Universal Transverse Mercator, Zone 16S
10 000-foot ticks: Illinois Coordinate System of 1983 (east
zone)

Imagery.....NAIP, August 2011
Roads.....©2006-2011 TomTom
Names.....GNIS, 2011
Hydrography.....National Hydrography Dataset, 2011
Contours.....National Elevation Dataset, 2008
Boundaries.....Census, IBWC, IBC, USGS, 1972 - 2010

UTM GRID AND 2012 MAGNETIC NORTH
DECLINATION AT CENTER OF SHEET

U.S. National Grid
100 000-m Square ID
CJ
Grid Zone Designation
16S



CONTOUR INTERVAL 10 FEET
NORTH AMERICAN VERTICAL DATUM OF 1988
This map was produced to conform with the
National Geospatial Program US Topo Product Standard, 2011.
A metadata file associated with this product is draft version 0.6.3



ROAD CLASSIFICATION

Interstate Route	State Route
US Route	Local Road
Ramp	4WD

Interstate Route US Route State Route

QUADRANGLE LOCATION		
Cooks Mills	Humboldt	Charleston North
Mattoon West	Mattoon East	Charleston South
Nioga	Johnstown	Tokelo

MATTOON EAST, IL
2012