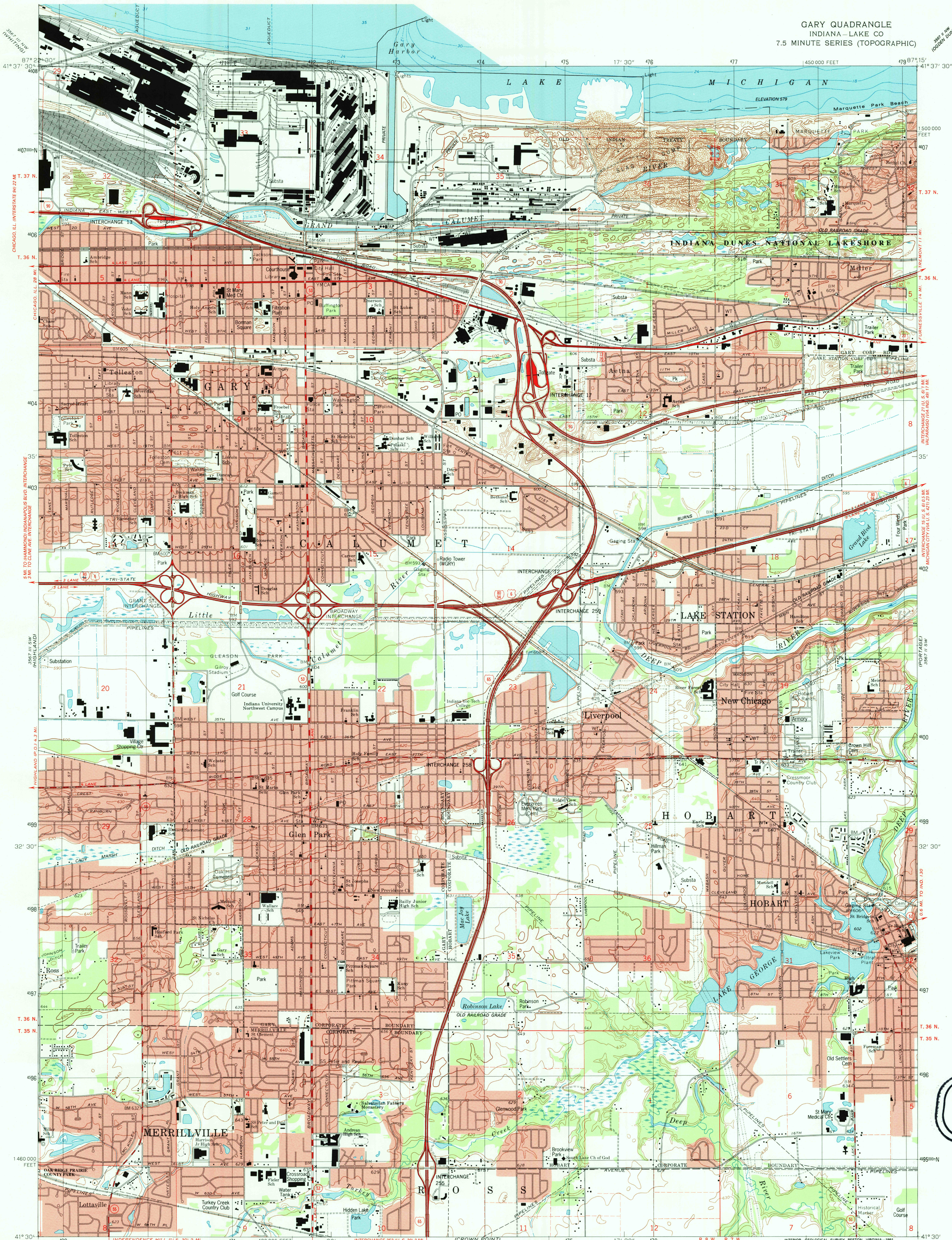


UNITED STATES
DEPARTMENT OF THE INTERIOR
GEOLOGICAL SURVEY

GARY QUADRANGLE
INDIANA—LAKE CO
7.5 MINUTE SERIES (TOPOGRAPHIC)



Produced by the United States Geological Survey
in cooperation with Indiana Department of Natural Resources
Control by USGS and NOS/NOAA
Topography by photogrammetric methods from aerial photographs
taken 1951 and planetable surveys 1953. Revised from
aerial photographs taken 1989 and 1991. Field checked 1991.
Map edited 1991.
Selected hydrographic data compiled from NOS chart 14905 (1986).
This information is not intended for navigational purposes.
Projection and 10,000-foot grid ticks: Indiana coordinate
system, west zone (transverse Mercator).
1000-meter Universal Transverse Mercator grid, zone 16
1927 North American Datum.
The difference between 1927 North American Datum and North
American Datum of 1983 (NAD 83) for 7.5-minute intersections
is given in USGS Bulletin 1875. The NAD 83 is shown by
dashed corner ticks.
There may be private inholdings within the boundaries of
the National or State reservations shown on this map.
Red tint indicates areas in which only landmark buildings are shown.
Fine red dashed lines indicate selected fence and field lines
generally visible on aerial photographs. This information is unchecked

UTM GRID AND 1991 MAGNETIC NORTH
DECLINATION AT CENTER OF SHEET

CONTOUR INTERVAL 10 FEET
NATIONAL GEODETIC VERTICAL DATUM OF 1929
DEPTH CURVES AND SOUNDINGS IN FEET
REFERENCE LEVEL 578.8 FEET INTERNATIONAL GREAT LAKES DATUM
THE RELATIONSHIP BETWEEN THE TWO DATUMS IS VARIABLE
COMPLIES WITH U.S. GEOLOGICAL SURVEY STANDARDS FOR SPATIAL ACCURACY: CLASS 2
FOR SALE BY U.S. GEOLOGICAL SURVEY
DENVER, COLORADO 80225, OR RESTON, VIRGINIA 22092
AND INDIANA DEPARTMENT OF NATURAL RESOURCES, INDIANAPOLIS, INDIANA 46204
A FOLDER DESCRIBING TOPOGRAPHIC MAPS AND SYMBOLS IS AVAILABLE ON REQUEST

ROAD CLASSIFICATION
Primary highway, all weather, hard surface
Secondary highway, all weather, hard surface
Light-duty road, all weather, improved surface
Unimproved road, fair or dry weather
Interstate Route U.S. Route State Route
GARY, IND.
41087-E3-TF-024
1991
DMA 3567 III SE - SERIES V851

USGS AND HISTORICAL
MAP ARCHIVES
JUL 31 1995
REC'D FILE COPY

