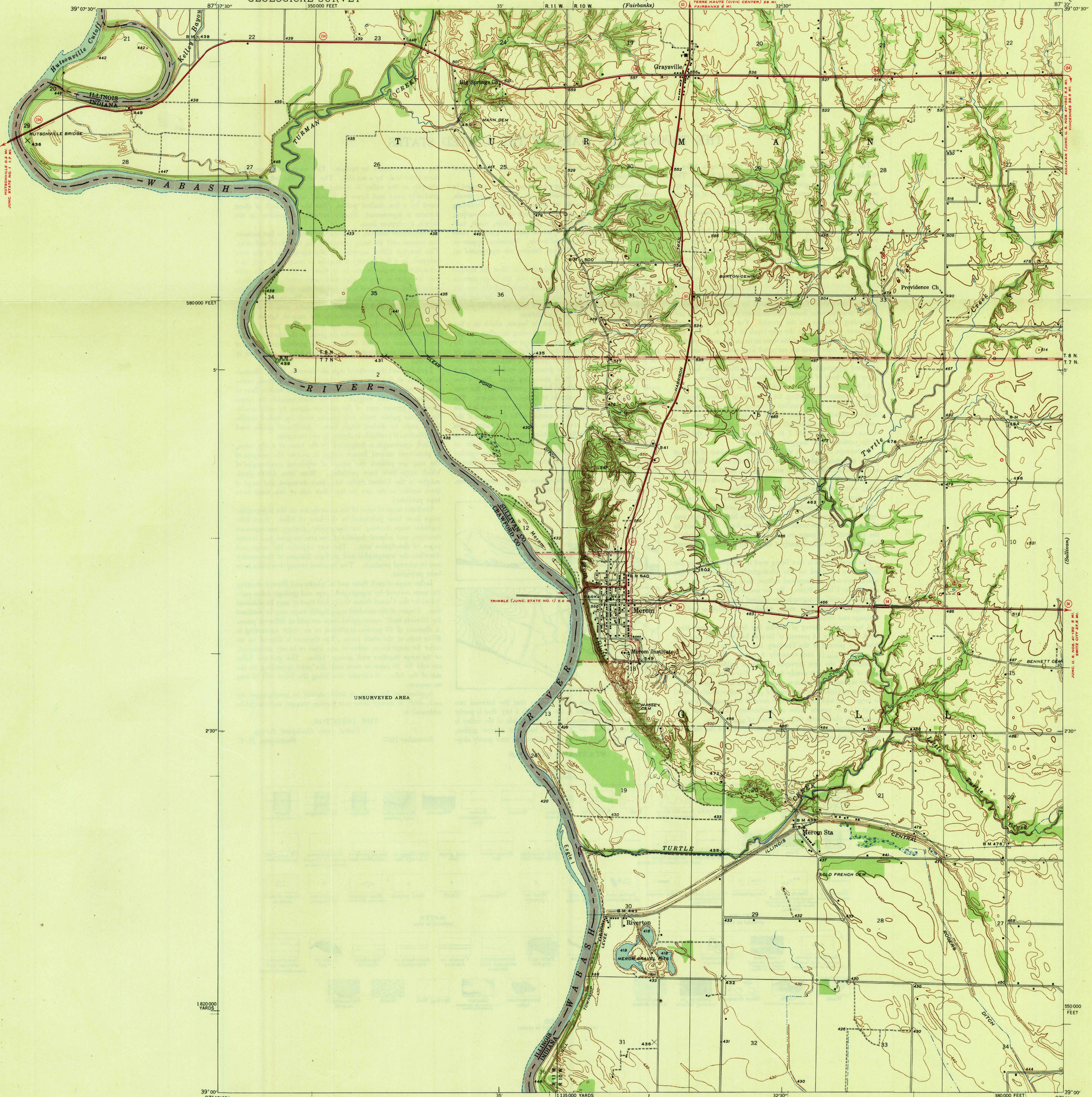


U. S. G. S.
FILE COPY
Inspection and Editing.

UNITED STATES
DEPARTMENT OF THE INTERIOR
GEOLOGICAL SURVEY

STATE OF INDIANA
DEPARTMENT OF CONSERVATION
DIVISION OF GEOLOGY
INDIANAPOLIS, INDIANA
(Fairbanks)

INDIANA-ILLINOIS
MEROM QUADRANGLE
7½-MINUTE SERIES



Topography by Frank Lerner and G. A. Mock
Surveyed in 1941

TRUE NORTH
MAGNETIC NORTH
APPROXIMATE MEAN
DECLINATION, 1941

Scale 33,000
Contours interval 10 feet
Datum is mean sea level

ROUTES USUALLY TRAVELED
HARD IMPROVED SURFACES
OTHER SURFACE IMPROVEMENTS
U. S. ROUTE 1943
STATE ROUTE
OIL WELLS

Polyconic projection. 1927 North American datum
5000 yard grid based on U. S. zone system, C
10000 foot grid based on Indiana (West)
rectangular coordinate system

MEROM, IND.-ILL.
Edition of 1943
N 3900--W 8730/7.5 X 9.5

USGS
Historical File
Topographic Division
FILE COPY
Inspection and Editing.