

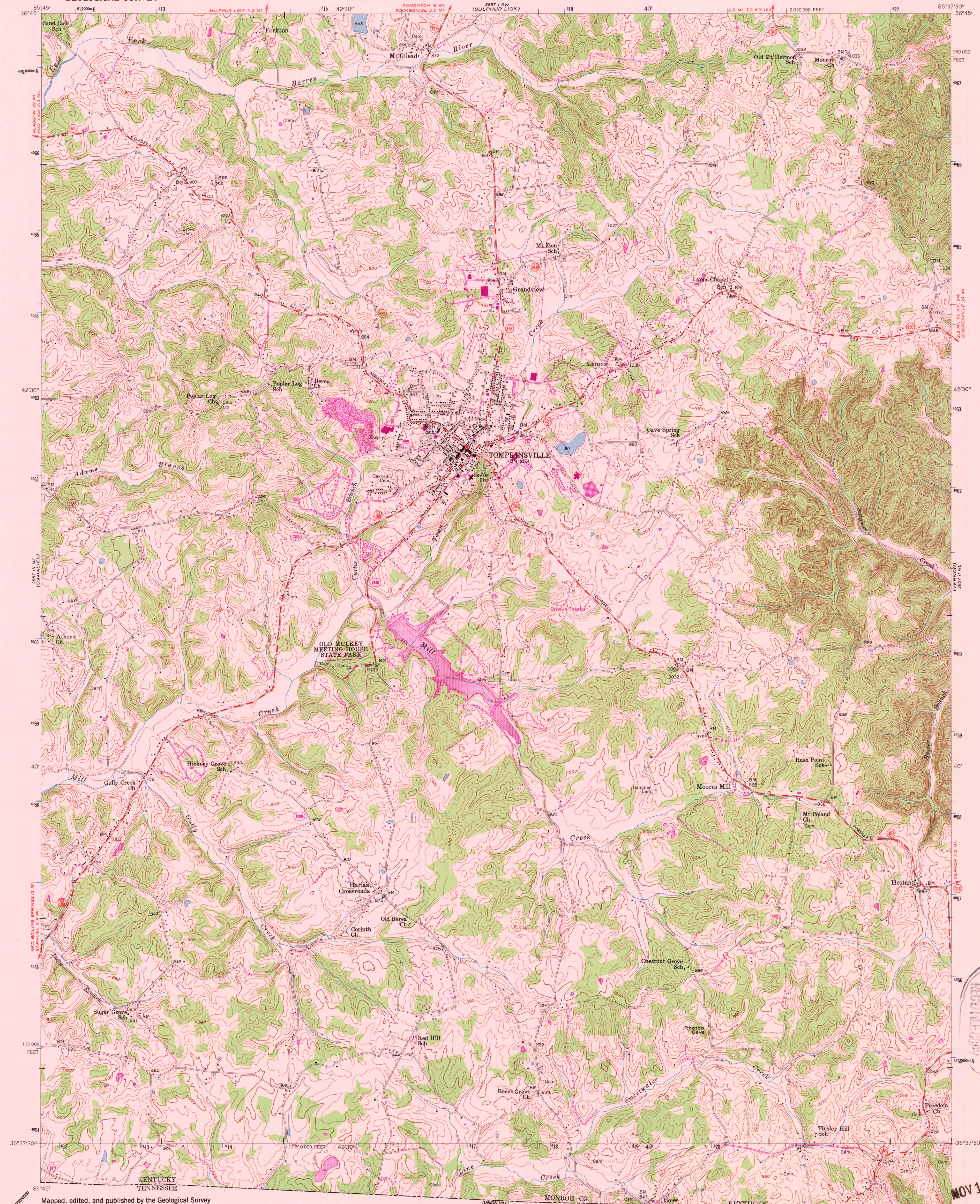
36°45' N  
85°45' W  
(FREEDOM)

UNITED STATES  
DEPARTMENT OF THE INTERIOR  
GEOLOGICAL SURVEY

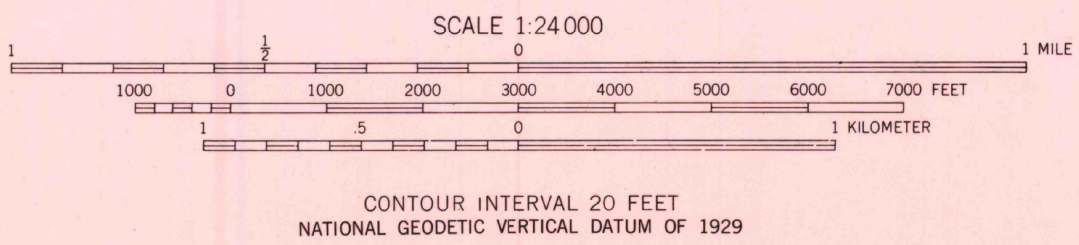
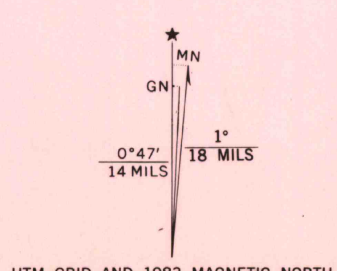
STATE OF KENTUCKY  
AGRICULTURAL AND INDUSTRIAL DEVELOPMENT BOARD

TOMPKINSVILLE QUADRANGLE  
KENTUCKY—MONROE CO.  
7.5 MINUTE SERIES (TOPOGRAPHIC)  
NW 1/4 TOMPKINSVILLE 15' QUADRANGLE

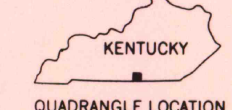
36°45' N  
85°45' W  
(FREEDOM)



Mapped, edited, and published by the Geological Survey  
Control by USGS and NOS/NOAA  
Topography by photogrammetric methods from aerial  
photographs taken 1951. Field checked 1954  
Polyconic projection. 10,000-foot grid ticks based on  
Kentucky coordinate system, south zone. 1000-meter  
Universal Transverse Mercator grid ticks, zone 16, shown in blue  
1927 North American Datum. To place on the predicted  
North American Datum 1983 move the projection lines  
5 meters south and 3 meters west as shown by dashed corner ticks  
There may be private inholdings within the boundaries  
of the National or State reservations shown on this map



THIS MAP COMPLIES WITH NATIONAL MAP ACCURACY STANDARDS  
FOR SALE BY U.S. GEOLOGICAL SURVEY, RESTON, VIRGINIA 22092,  
KENTUCKY GEOLOGICAL SURVEY, LEXINGTON, KENTUCKY 40506,  
AND KENTUCKY DEPARTMENT OF COMMERCE, FRANKFORT, KENTUCKY 40601  
A FOLDER DESCRIBING TOPOGRAPHIC MAPS AND SYMBOLS IS AVAILABLE ON REQUEST



QUADRANGLE LOCATION

Revisions shown in purple and woodland compiled in cooperation  
with State of Kentucky agencies from aerial photographs taken  
1981 and other sources. Contours adjusted adjacent to certain photorevised  
hydrographic features. This information not field checked. Map edited 1983

ROAD CLASSIFICATION  
Heavy-duty ——— Light-duty ———  
Medium-duty ——— Unimproved dirt ———  
U. S. Route ——— State Route ———

TOMPKINSVILLE, KY.  
NW 1/4 TOMPKINSVILLE 15' QUADRANGLE  
36085-F6-TF-024

1954  
PHOTOREVISED 1983  
DMA 3857 II NW—SERIES V853

NOV 1 1983