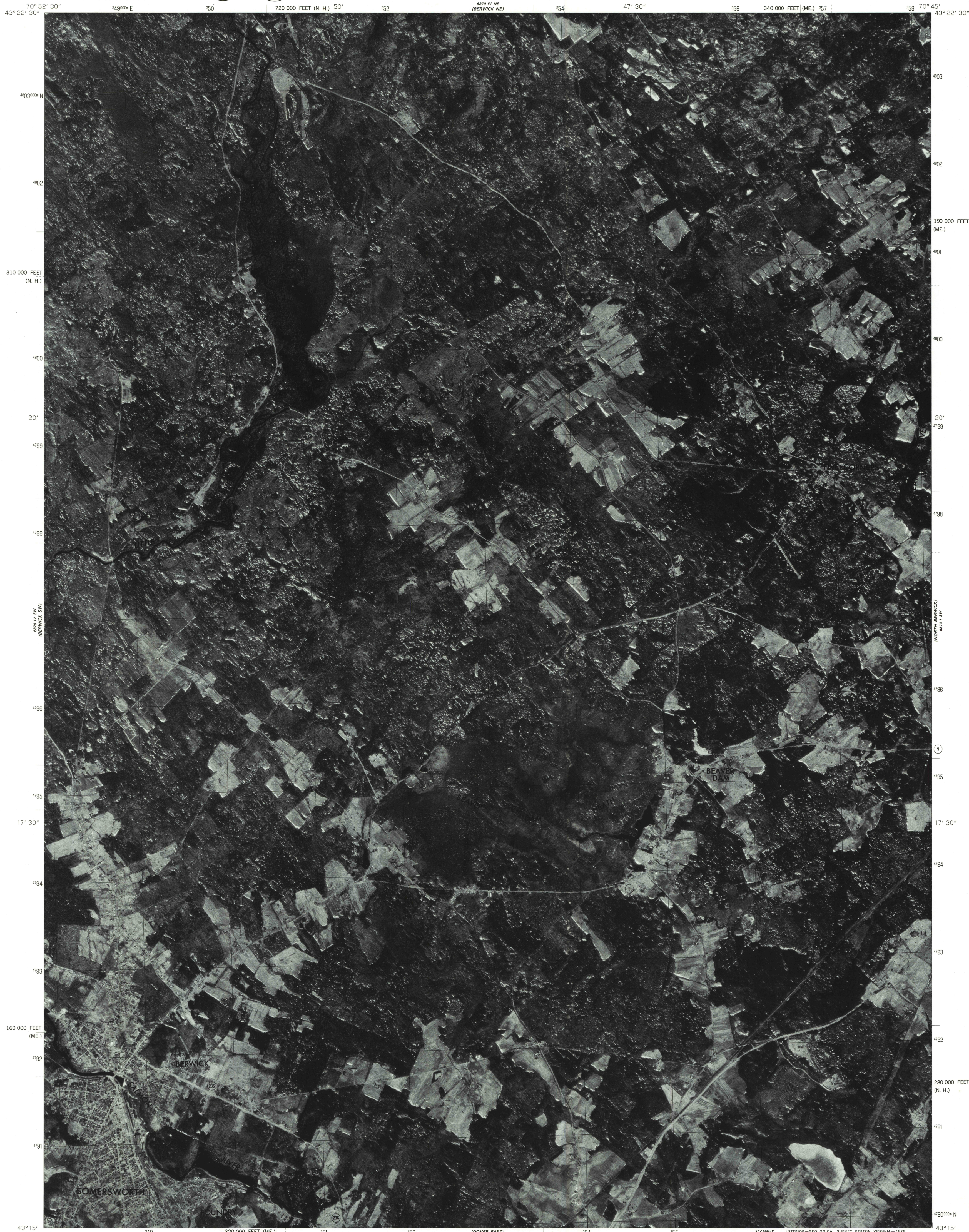


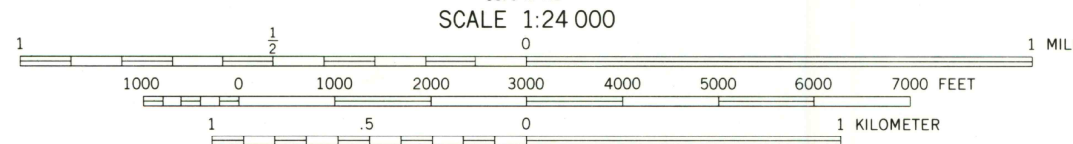
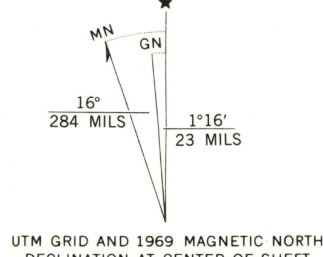
UNITED STATES  
DEPARTMENT OF THE INTERIOR  
GEOLOGICAL SURVEY



SOMERSWORTH QUADRANGLE  
NEW HAMPSHIRE—MAINE  
7.5 MINUTE SERIES ORTHOPHOTOQUAD



Produced and published by the Geological Survey  
in cooperation with the Soil Conservation Service  
Orthophotograph prepared from 1:80,000-scale  
aerial photograph taken April 1, 1977  
Projection: Maine coordinate system, west zone  
(transverse Mercator)  
10,000-foot grid ticks based on Maine coordinate  
system, west zone and New Hampshire coordinate system  
1000-meter Universal Transverse Mercator grid,  
zone 19. 1927 North American datum  
Photomage rectified by optical scanning  
which may produce double or mismatched images;  
use the mean of image positions for map point



THIS MAP COMPLIES WITH NATIONAL MAP ACCURACY STANDARDS  
FOR SALE BY U. S. GEOLOGICAL SURVEY, RESTON, VIRGINIA 22092



PRINCIPAL NUMBERED HIGHWAYS  
Interstate Route U. S. Route State Route

SOMERSWORTH, N. H.—ME.  
N4315-W7045/7.5

1977  
AMS 6870 IV SE—SERIES V011

