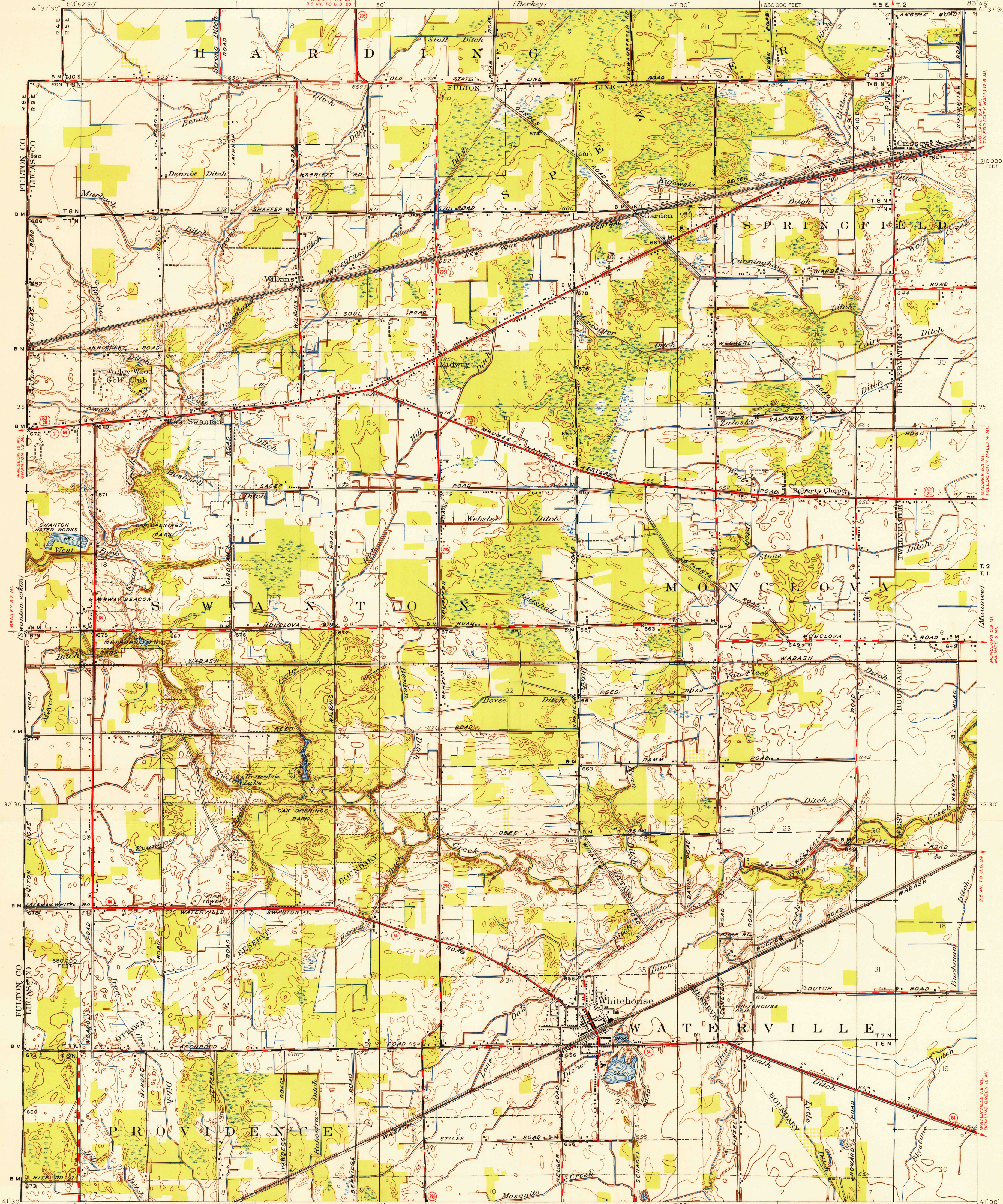


U.S.G.S.
FILE COPY
Imposition and Publishing

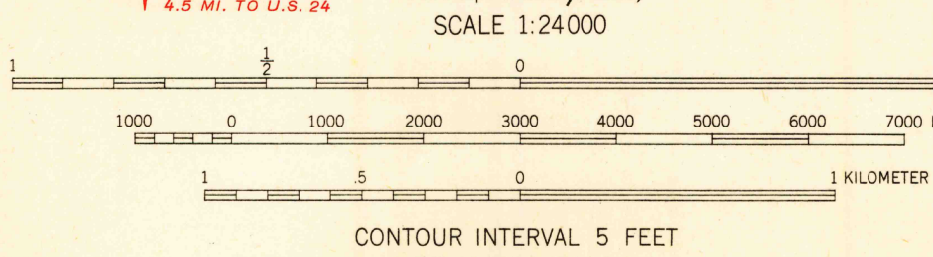
UNITED STATES
DEPARTMENT OF THE INTERIOR
GEOLOGICAL SURVEY

LUCAS COUNTY, OHIO
REPRESENTED BY THE
COUNTY COMMISSIONERS
(Berkey)

WHITEHOUSE QUADRANGLE
OHIO (LUCAS COUNTY)
75-MINUTE SERIES (TOPOGRAPHIC)
R. 5 E. T. 2



Maped, edited, and published by the Geological Survey
Surveyed by plane-table methods in 1925. Revised in 1951.
Polyconic projection 1927 North American datum.
10,000-foot grid based on Ohio coordinate system,
north zone



U.S.G.S.
Historical File
Topographic Division
ROAD CLASSIFICATION
Heavy-duty 4 LANE 16 LANE Light-duty
Medium-duty 4 LANE 16 LANE Unimproved dirt
U. S. Route State Route

U.S.G.S.
FILE COPY
Imposition and Publishing

WHITEHOUSE, OHIO
1951

FOR SALE BY U. S. GEOLOGICAL SURVEY, WASHINGTON 25, D. C.
A FOLDER DESCRIBING TOPOGRAPHIC MAPS AND SYMBOLS IS AVAILABLE ON REQUEST