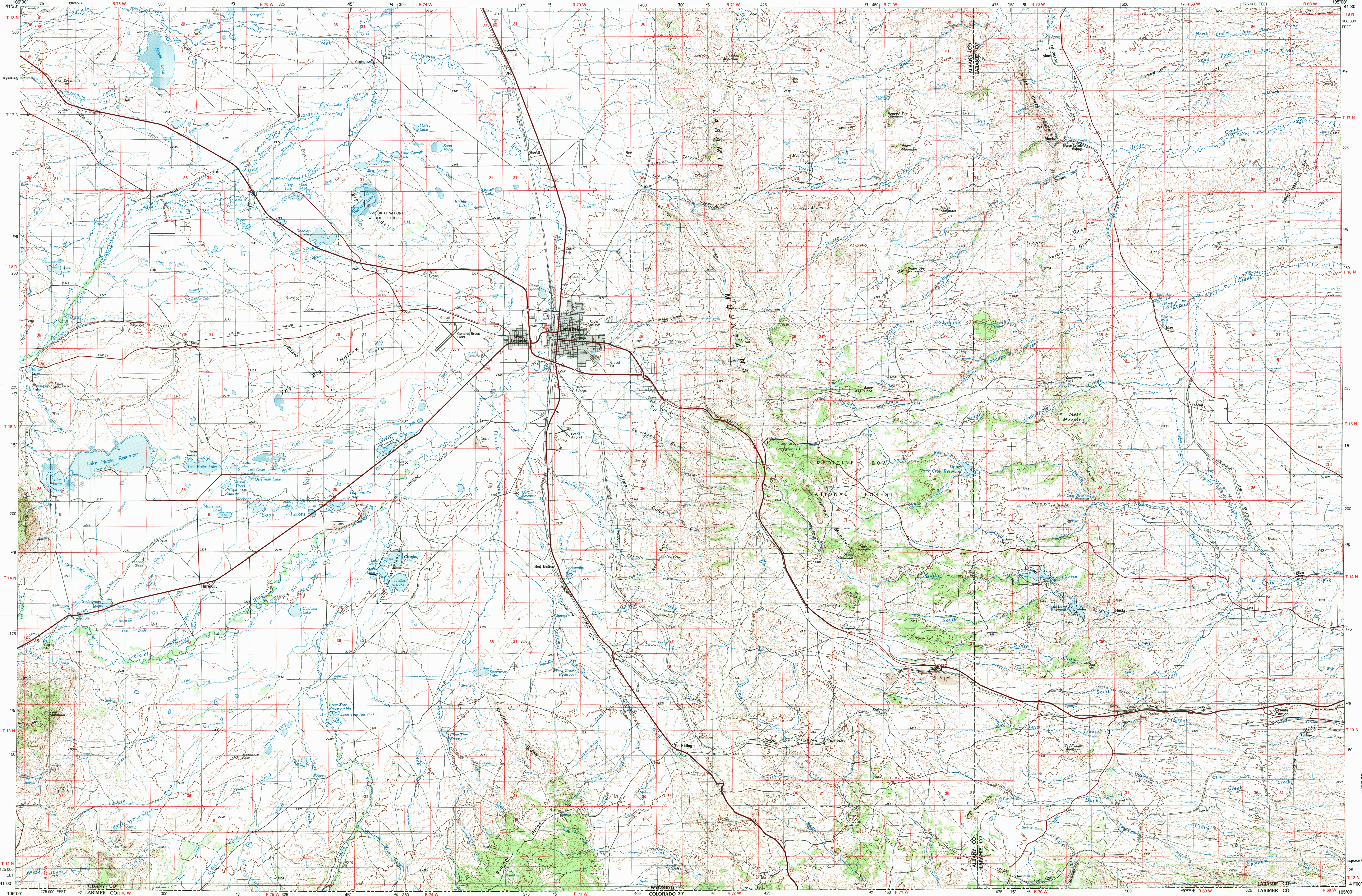
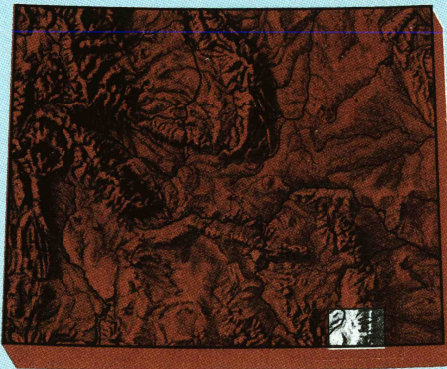


LARAMIE, WYOMING

30X60 MINUTE SERIES (TOPOGRAPHIC)

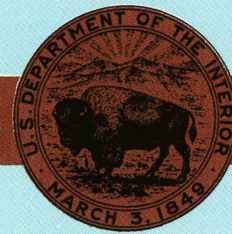


1:100 000-scale metric
topographic map of
Laramie
WYOMING



30 X 60 MINUTE QUADRANGLE
SHOWING

- Contours and elevations in meters
- Highways, roads and other manmade structures
- Water features
- Woodland areas
- Geographic names



GEOLOGICAL SURVEY

1981

Produced by the United States Geological Survey
Compiled from USGS 1:24 000 and 1:62 500-scale topographic maps dated 1948-1963. Partially revised from aerial photographs taken 1979 and other source data.
Revised information not field checked.
Map edited 1981.

Projection and 10 000-meter grid, zone 13
Universal Transverse Mercator
25 000-foot grid ticks based on Wyoming coordinate system, east zone. 1927 North American datum
To place on the predicted North American Datum 1983 move the projection lines 6 meters north and 48 meters east
There may be private inholdings within the boundaries of the National or State reservations shown on this map

CONTOUR INTERVAL 20 METERS
NATIONAL GEODETIC VERTICAL DATUM OF 1929

THIS MAP COMPLIES WITH NATIONAL MAP ACCURACY STANDARDS

CONVERSION TABLE		DECLINATION DIAGRAM	ADJOINING MAPS		
Meters	Feet		1	2	3
1	3.2808		4	5	
2	6.5617		6	7	8
3	9.8425				
4	13.1234				
5	16.4042				
6	19.6850				
7	22.9659				
8	26.2467				
9	29.5275				
10	32.8084				
To convert meters to feet multiply by 3.2808					
To convert feet to meters multiply by 0.3048					

UTM grid convergence (GN) and 1981 magnetic declination (MM) at center of map Diagram is approximate

1 Medicine Bow

2 Rock River

3 Chequamegon

4 Sago

5 Cheyenne

6 Warden

7 Fort Collins

8 Eaton

FOR SALE BY U.S. GEOLOGICAL SURVEY, DENVER, COLORADO 80225
OR RESTON, VIRGINIA 22092

Topographic Map Symbols

Primary highway, hard surface	
Secondary highway, hard surface	
Light duty road, principal street, hard or improved surface	
Other road or street, trail	
Route marker: Interstate, U. S., State	
Railroad: standard gauge, narrow gauge	
Bridge: overpass, underpass	
Tunnel: road, railroad	
Built up area: locality, elevation	
Airport: landing field; landing strip	
National boundary	
County boundary	
National or State reservation boundary	
Land grant boundary	
U. S. public lands survey: range, township, section	
Range, township; section line: protracted	
Power transmission line, pipeline	
Dam; dam with lock	
Cemetery: building	
Windmill; water well; spring	
Mine shaft; adit or cave; mine, quarry; gravel pit	
Campground; picnic area; U. S. location monument	
Ruin; cliff dwelling	
Distorted surface: strip mine, lava, sand	
Contours: index; intermediate; supplementary	
Bathymetric contours: index; intermediate	
Stream, lake: perennial; intermittent	
Reefs; large and small; left, large and small	
Area to be submerged; marsh, swamp	
Land subject to controlled inundation; woodland	
Scrub; mangrove	
Orchard; vineyard	

A perpetuated descriptive topographic map is available on request

RETURN TO:
USGS AND HISTORICAL MAP ARCHIVES

SCALE 1:100 000
1 CENTIMETER ON THE MAP REPRESENTS 1 KILOMETER ON THE GROUND
CONTOUR INTERVAL 20 METERS

LARAMIE, WYOMING
N4100W10500/30x60

1981