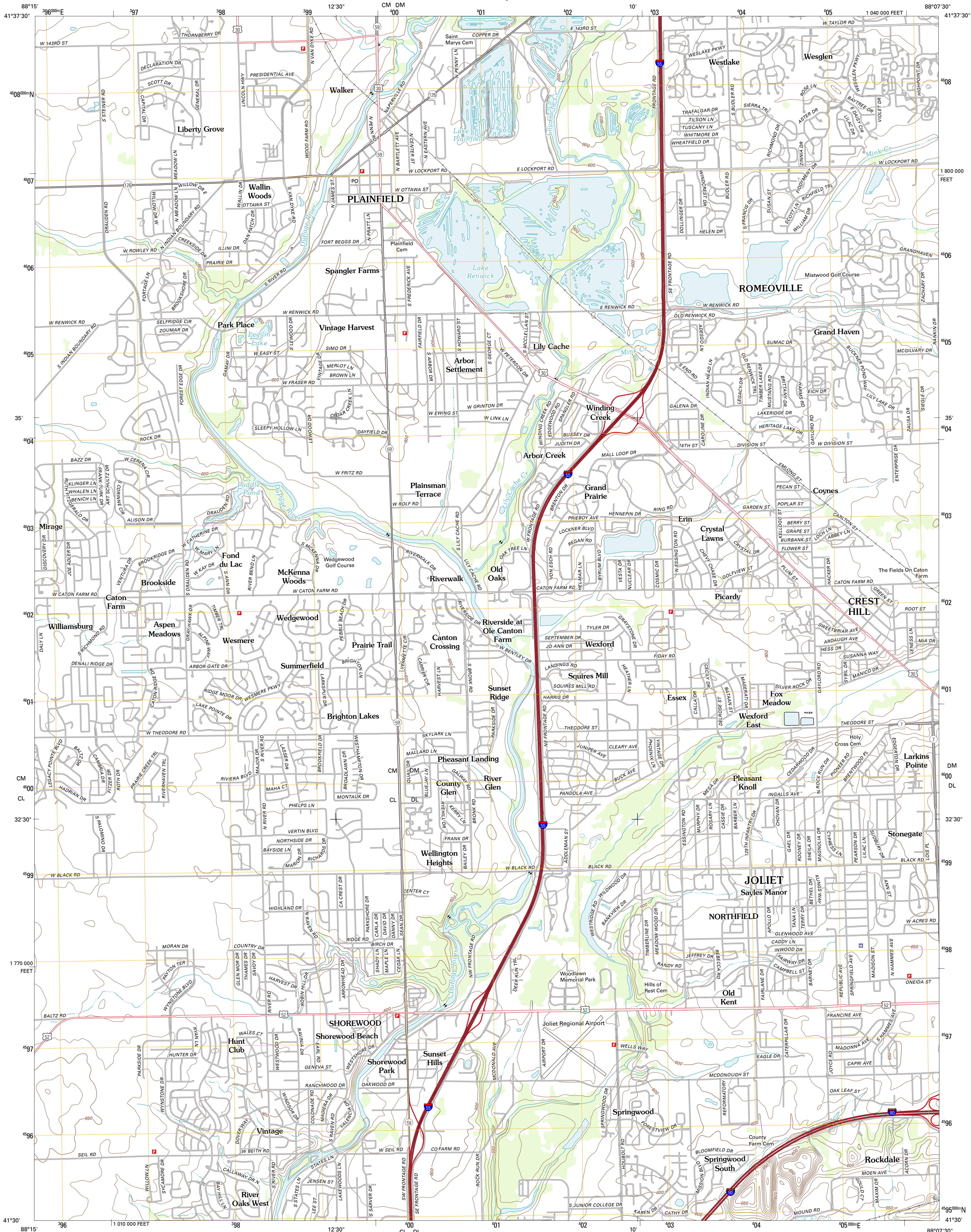




U.S. DEPARTMENT OF THE INTERIOR
U. S. GEOLOGICAL SURVEY



PLAINFIELD QUADRANGLE
ILLINOIS-WILL CO.
7.5-MINUTE SERIES



Produced by the United States Geological Survey
North American Datum of 1983 (NAD83)
World Geodetic System of 1984 (WGS84). Projection and
1 000-meter grid: Universal Transverse Mercator, Zone 16T
10 000-foot ticks: Illinois Coordinate System of 1983 (east
zone)

Imagery.....NAP, August 2011
Roads.....©2006-2011 TomTom
Names.....GNIS, 2011
Hydrography.....National Hydrography Dataset, 2011
Contours.....National Elevation Dataset, 2001
Boundaries.....Census, IBWC, IBC, USGS, 1972 - 2010

UTM GRID AND 2012 MAGNETIC NORTH
DECLINATION AT CENTER OF SHEET

U.S. National Grid
100,000m Square ID
16T
CL DL
Grid Zone Designation
16T

SCALE 1:24 000

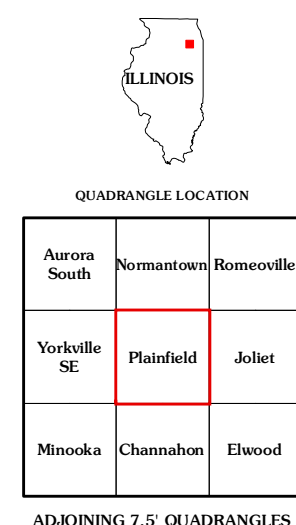
1 000 000 FEET

1 000 000 METERS

1 000 000 KILOMETERS

CONTOUR INTERVAL 10 FEET
NORTH AMERICAN VERTICAL DATUM OF 1988

This map was produced to conform with the
National Geospatial Program US Topo Product Standard, 2011.
A metadata file associated with this product is draft version 0.6.3



ROAD CLASSIFICATION

Interstate Route	State Route
US Route	Local Road
Ramp	4WD

PLAINFIELD, IL
2012