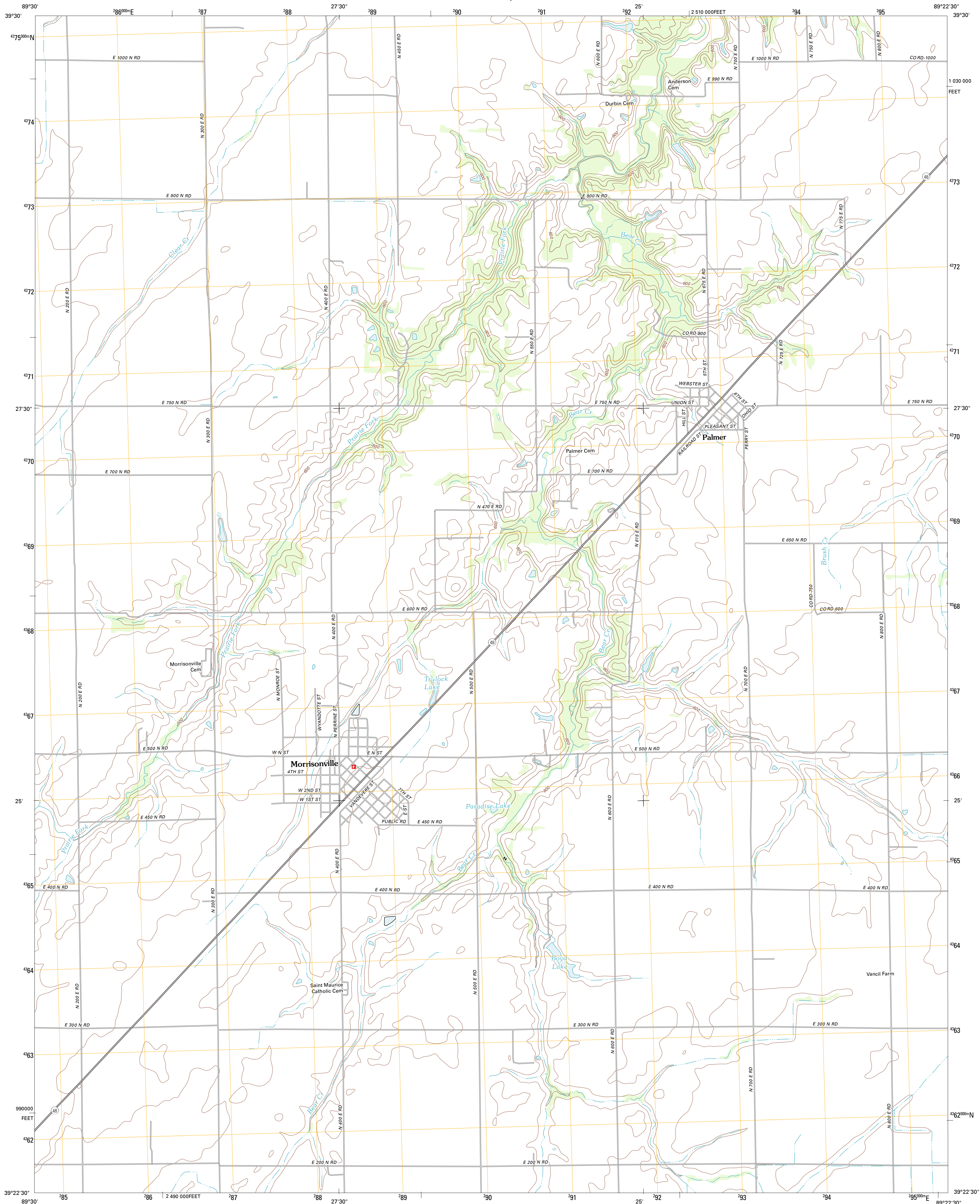




U.S. DEPARTMENT OF THE INTERIOR
U. S. GEOLOGICAL SURVEY

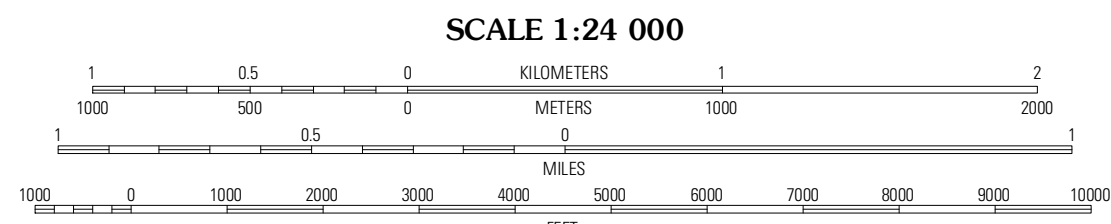
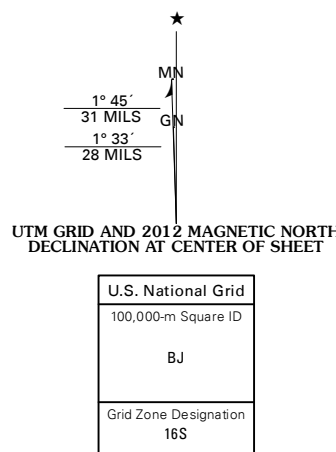


MORRISONVILLE QUADRANGLE
ILLINOIS-CHRISTIAN CO.
7.5-MINUTE SERIES



Produced by the United States Geological Survey
North American Datum of 1983 (NAD83)
World Geodetic System of 1984 (WGS84) Projection and
1 000-meter grid: Universal Transverse Mercator, Zone 16S
10 000-foot ticks: Illinois Coordinate System of 1983 (west zone)

Imagery.....NAIP, August 2011
Roads.....©2006-2011 TomTom
Names.....GNS, 2011
Hydrography.....National Hydrography Dataset, 2011
Contours.....National Elevation Dataset, 2008
Boundaries.....Census, IBWC, IBC, USGS, 1972 - 2010



CONTOUR INTERVAL 10 FEET
NORTH AMERICAN VERTICAL DATUM OF 1988

This map was produced to conform with the
National Geospatial Program US Topo Product Standard, 2011.
A metadata file associated with this product is draft version 0.6.3



Pawnee	Kincaid	Taylorville
Raymond NE	Morrisonville	Clarkdale
Raymond	Nokomis SW	Nokomis

ROAD CLASSIFICATION			
Interstate Route	State Route	Local Road	4WD
US Route	US Route	US Route	State Route
Ramp	Interstate Route	US Route	State Route

MORRISONVILLE, IL
2012