



V501
Edition 2-AMS (First Printing, 5-60)

Prepared by the Army Map Service (AMSG), Corps of Engineers, U. S. Army, Washington, D. C. Compiled in 1954 by photogrammetric methods and from United States Quadrangles, 1:50,000, 1:62,500, Corps of Engineers, and U. S. Geological Survey, 1:50,000. Planimetric detail revised by photogrammetric methods. Horizontal and vertical control by USCGS and USGS. Map field checked 1954.

POPULATED PLACES

Over 500,000
25,000 to 100,000
5,000 to 25,000
1,000 to 5,000
Less than 1,000

RAILROADS

Standard gauge
Narrow gauge
Landing area
Seaplane airport
Seaplane anchorage
Park or reservation

LEGEND

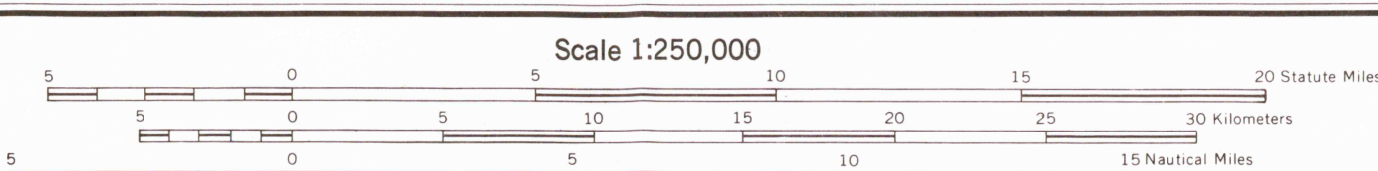
ROAD DATA 1954

Figures in red denote approximate distances in miles between stars

ROADS
Hard surface, heavy duty
Hard surface, medium duty
More than two lanes wide
Two lanes wide; Federal route marker
Two lanes wide; State route marker
Improved light duty
Unimproved dirt
Trail

Landplane airport
Spot elevation in feet
Marsh or swamp
Intermittent or dry stream
Power line

Landmarks: School; Church; Other; etc.
Horizontal control point
Spot elevation in feet
Marsh or swamp
Intermittent or dry stream
Power line



CONTOUR INTERVAL 100 FEET

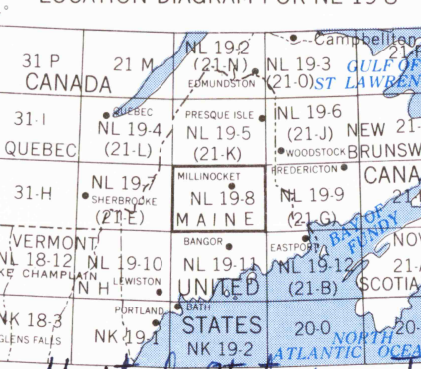
TRANSVERSE MERCATOR PROJECTION

BLUE NUMBERED LINES INDICATE THE 10,000 METER UNIVERSAL TRANSVERSE MERCATOR GRID ZONE 19 THE LAST FOUR DIGITS OF THE GRID NUMBER ARE OMITTED

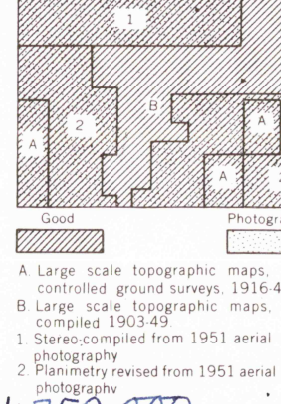
1955 MAGNETIC DECLINATION FOR THIS SHEET VARIES FROM 19° 15' WESTERLY FOR THE CENTER OF THE WEST EDGE TO 20° 42' WESTERLY FOR THE CENTER OF THE EAST EDGE. MEAN ANNUAL CHANGE IS NEGLECTABLE.



LOCATION DIAGRAM FOR NL 19-8



RELIABILITY DIAGRAM



5:60 PRINTED BY ARMY MAP SERVICE, CORPS OF ENGINEERS

