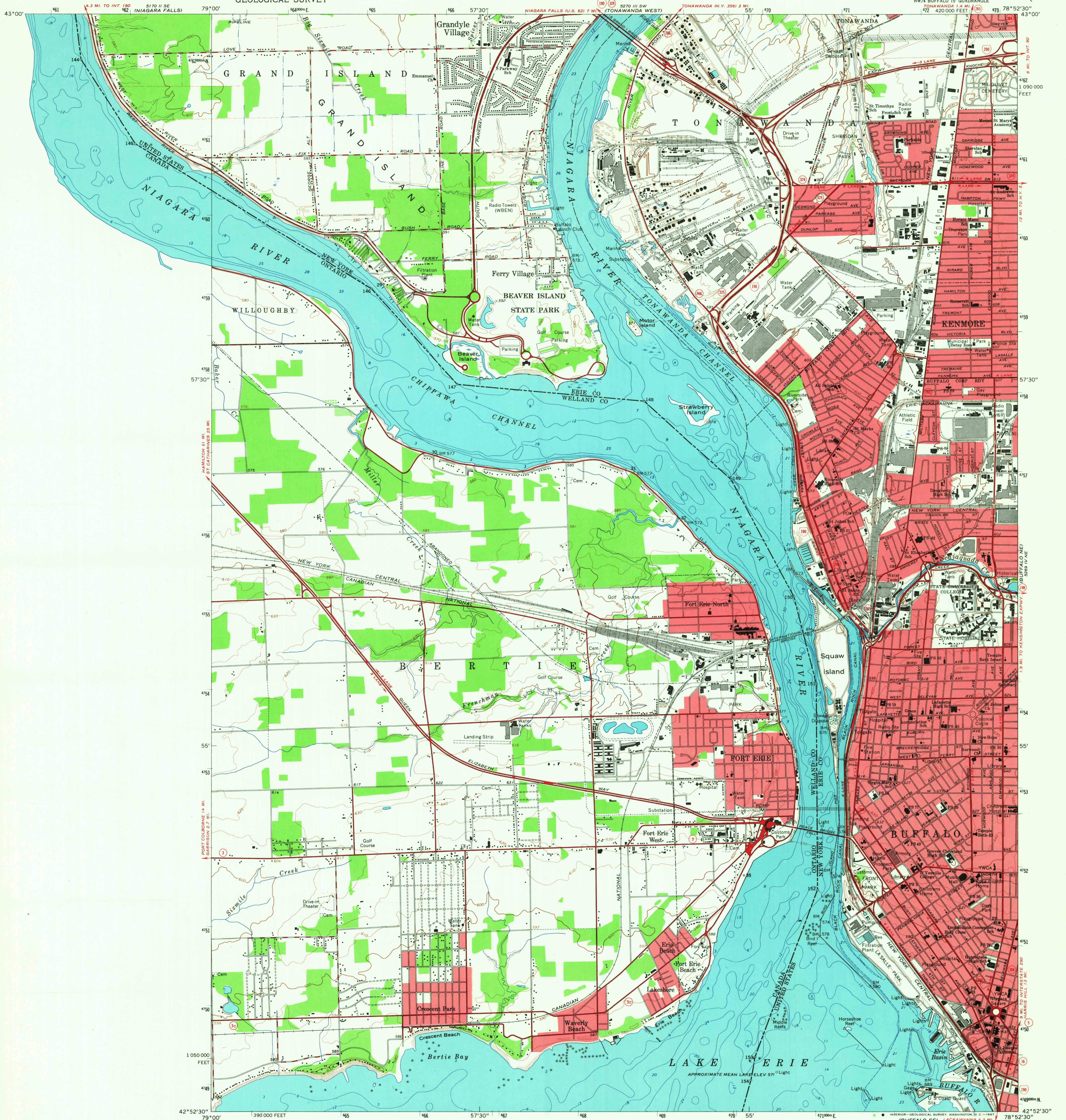
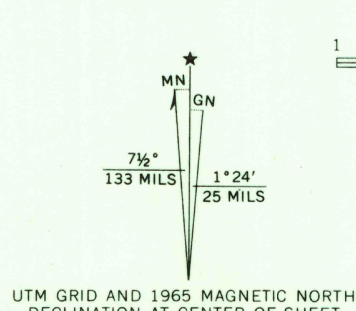


UNITED STATES  
DEPARTMENT OF THE INTERIOR  
GEOLOGICAL SURVEY

BUFFALO NW QUADRANGLE  
NEW YORK-ONTARIO  
7.5 MINUTE SERIES (TOPOGRAPHIC)  
NW 4 BUFFALO 15' QUADRANGLE  
TOWNSHIP 4 N. RANGE 4 W. 15' M. 15' S. 15' E.



Mapped, edited, and published by the Geological Survey  
in cooperation with New York Department of Public Works  
Control by USC&GS, International Boundary Commission,  
and U. S. Lake Survey  
Planimetry compiled by U. S. Corps of Engineers from aerial  
photographs taken 1942. Topography by planimetric surveys  
1948. Revised 1965  
Canadian portion mapped by the Surveys and Mapping Branch,  
Dept. of Mines and Technical Surveys 1961  
Selected hydrographic data compiled from U. S. Lake Survey Charts  
312 and 314 (1965).  
This information is not intended for navigational purposes  
Polyconic projection. 1927 North American datum  
10,000-foot grid based on New York coordinate system, west zone  
1000-meter Universal Transverse Mercator grid ticks, zone 17, shown in blue  
Fine red dashed lines indicate selected fence and field lines where  
generally visible on aerial photographs. This information is unchecked  
Red tint indicates areas in which only landmark buildings are shown



SCALE 1:24,000  
CONTOUR INTERVAL 10 FEET  
DATUM IS MEAN SEA LEVEL  
DEPTH CURVES AND SOUNDINGS IN FEET—DATUM IS LOW WATER 568.6 FEET

THE U. S. AREA OF THIS MAP COMPLIES WITH NATIONAL MAP ACCURACY STANDARDS  
FOR SALE BY U. S. GEOLOGICAL SURVEY, WASHINGTON, D. C. 20242  
A FOLDER DESCRIBING TOPOGRAPHIC MAPS AND SYMBOLS IS AVAILABLE ON REQUEST

USGS  
Historical File  
Topographic Division  
U.S.G.S.  
NEW YORK  
FILE COPY  
TOPOGRAPHIC DIVISION

ROAD CLASSIFICATION  
Heavy-duty ——— Light-duty ———  
Medium-duty ——— Unimproved dirt ———  
Interstate Route ——— State Route ———

BUFFALO NW, N.Y.-ONT.  
NW 4 BUFFALO 15' QUADRANGLE  
N4252.5-W7852.5/7.5  
1965  
AMS 5269 IV NW-SERIES V821

4210  
FEB 1 1966