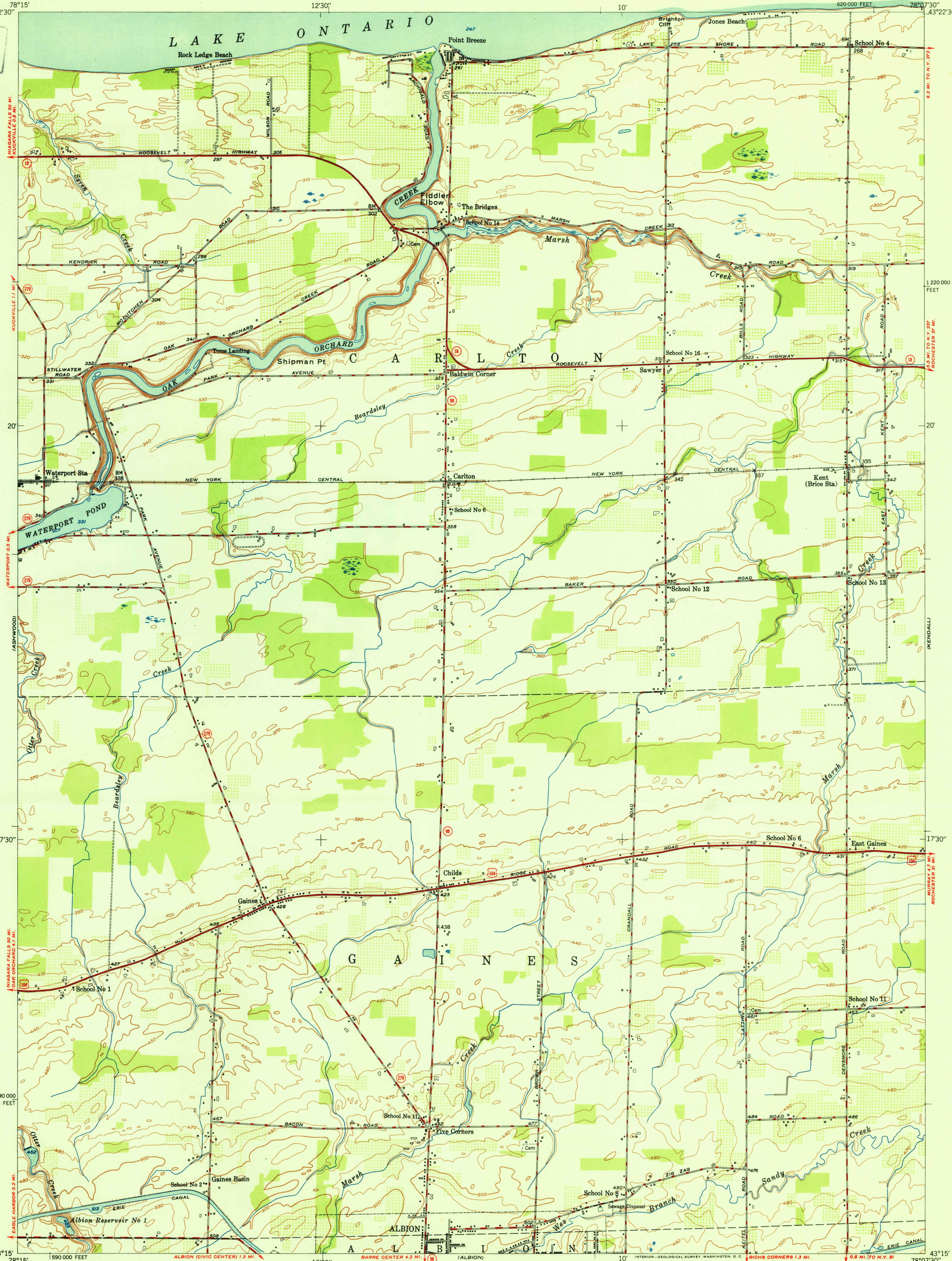
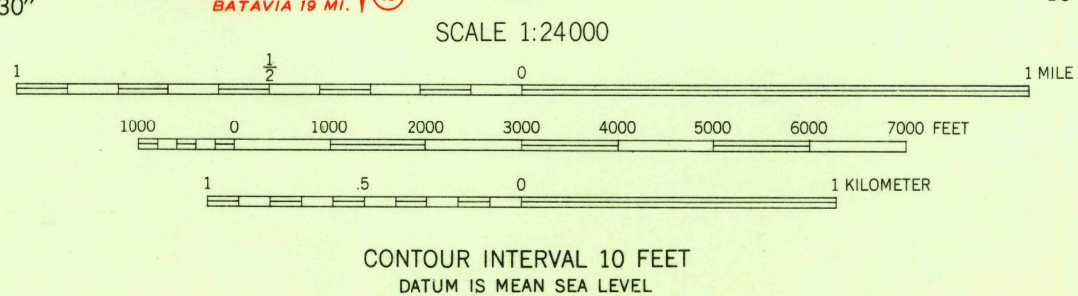


U.S.G.S.
FILE COPY
Inspection and Editing



Mapped, edited, and published by the Geological Survey
Control by USGS, USC&GS, and USED
Culture and drainage in part compiled by Corps of Engineers,
Dept. of the Army, from aerial photographs taken 1942
Topography by plane-table methods 1948
Polyconic projection. 1927 North American datum
10,000-foot grid based on New York coordinate system,
west zone

TRUE NORTH
MAGNETIC NORTH
APPROXIMATE MEAN
DECLINATION, 1948



ROAD CLASSIFICATION
HARD-SURFACE ALL WEATHER ROADS
Heavy-duty ———— 2 LANE 16' LANE Improved dirt ————
Medium-duty ———— 2 LANE 16' LANE Unimproved dirt ————
Loose-surface, graded, or narrow hard-surface ————
U. S. Route ———— State Route ————

KENT, N. Y.
SW/4 OAK ORCHARD 15' QUADRANGLE
N4315-W7807.5/7.5
EDITION OF 1951

THIS MAP COMPLIES WITH NATIONAL MAP ACCURACY STANDARDS
FOR SALE BY U. S. GEOLOGICAL SURVEY, WASHINGTON 25, D. C.
A FOLDER DESCRIBING TOPOGRAPHIC MAPS AND SYMBOLS IS AVAILABLE ON REQUEST

USGS
Historical File
Topographic Division
U.S.G.S.
FILE COPY
Inspection and Editing