

77° 37' 30"

43° 15'

43° 15'

43° 15'

43° 15'

43° 15'

43° 15'

43° 15'

43° 15'

43° 15'

43° 15'

43° 15'

43° 15'

43° 15'

43° 15'

43° 15'

43° 15'

43° 15'

43° 15'

43° 15'

43° 15'

43° 15'

43° 15'

43° 15'

UNITED STATES
DEPARTMENT OF THE INTERIOR
GEOLOGICAL SURVEY

STATE OF NEW YORK
DEPARTMENT OF TRANSPORTATION

ROCHESTER EAST QUADRANGLE
NEW YORK—MONROE CO.
7.5 MINUTE SERIES (TOPOGRAPHIC)

77° 30'

43° 15'

43° 15'

43° 15'

43° 15'

43° 15'

43° 15'

43° 15'

43° 15'

43° 15'

43° 15'

43° 15'

43° 15'

43° 15'

43° 15'

43° 15'

43° 15'

43° 15'

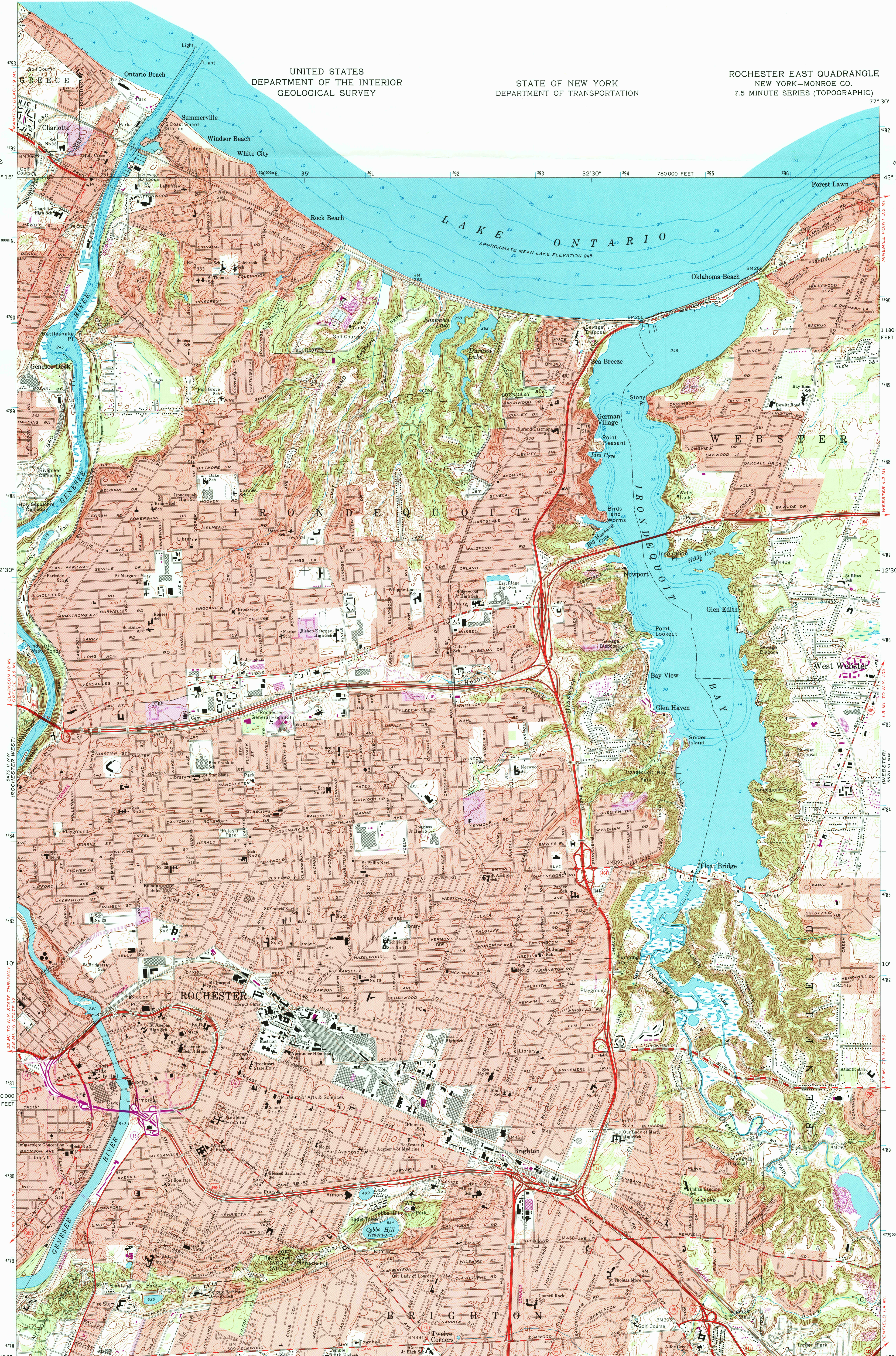
43° 15'

43° 15'

43° 15'

43° 15'

43° 15'



Mapped, edited, and published by the Geological Survey

Control by USGS, USCGS, and New York Geodetic Survey

Topography by photogrammetric methods from aerial

photographs taken 1976 and other source data

Supersedes map dated 1952

Selected hydrographic data compiled from U. S. Lake Charts 23 and 238 (1971)

This information is not intended for navigational purposes

Projection and 10,000-foot grid ticks: New York coordinate

system, west zone (transverse Mercator)

1000-meter Universal Transverse Mercator grid ticks,

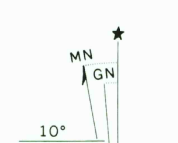
zone 18, shown in blue. 1927 North American datum

Red tint indicates areas in which only landmark buildings are shown

Revisions shown in purple and woodland compiled from

aerial photographs taken 1976 and other source data

This information not field checked. Map edited 1978



SCALE 1:24,000

CONTOUR INTERVAL 5 FEET

NATIONAL GEODETIC VERTICAL DATUM OF 1929

DEPTH CURVES AND SOUNDINGS IN FEET—DATUM IS LOW WATER 242.8 FEET

UTM GRID AND 1978 MAGNETIC NORTH

DECLINATION AT CENTER OF SHEET

Purple tint indicates extension of urban areas

THIS MAP COMPLIES WITH NATIONAL MAP ACCURACY STANDARDS

FOR SALE BY U. S. GEOLOGICAL SURVEY, RESTON, VIRGINIA 22092

A FOLDER DESCRIBING TOPOGRAPHIC MAPS AND SYMBOLS IS AVAILABLE ON REQUEST



ROAD CLASSIFICATION

Primary highway hard surface

Secondary highway hard surface

Unimproved road

Light-duty road, hard or improved surface

U. S. Route

State Route

REC'D FILE COPY

JUL 16 1996

ROCHESTER EAST, N. Y.

N4307.5—W7730.7.5

1971

PHOTOREVISED 1978

AMS 5470 II NE—SERIES V821



ISBN 0-607-41778-1