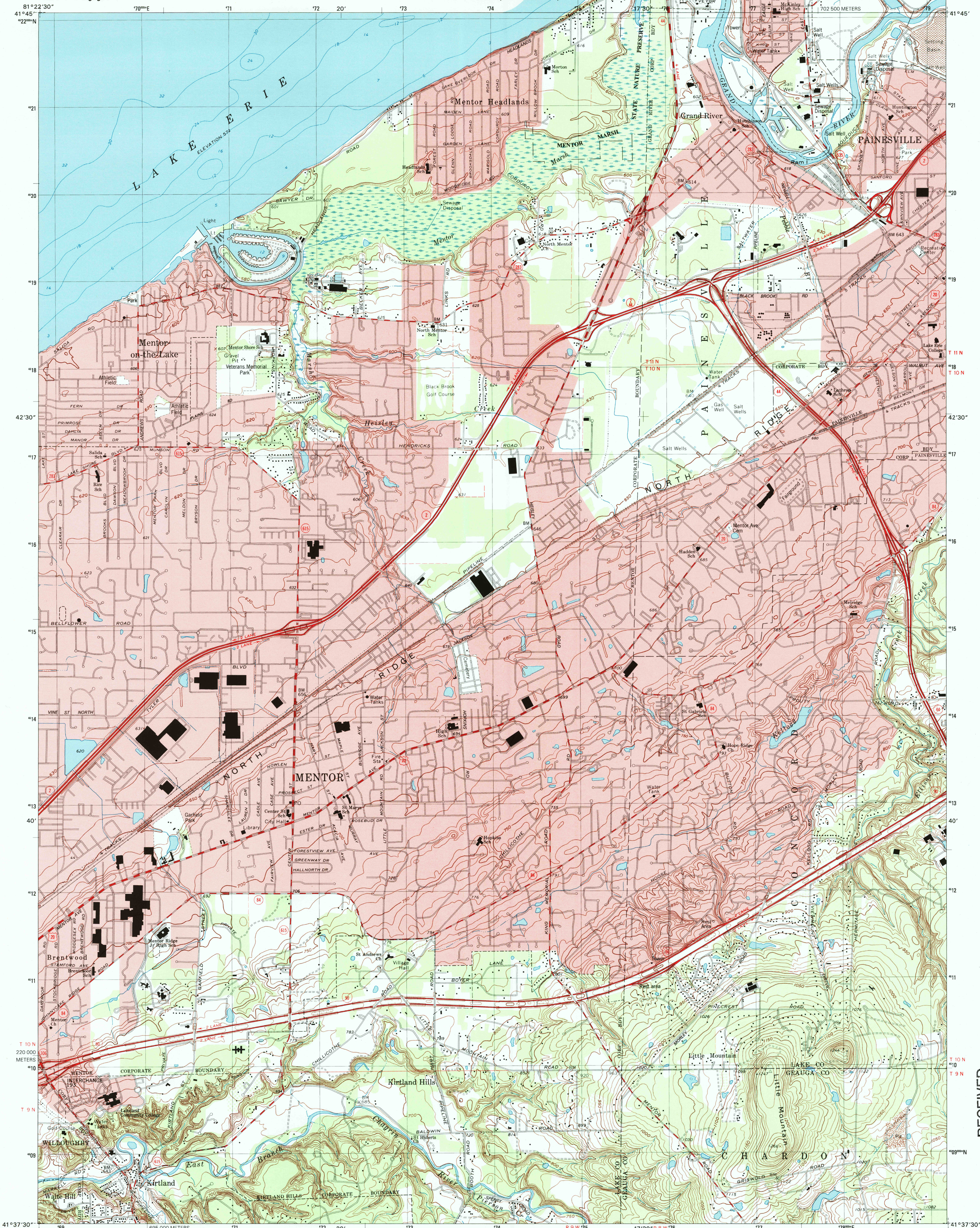


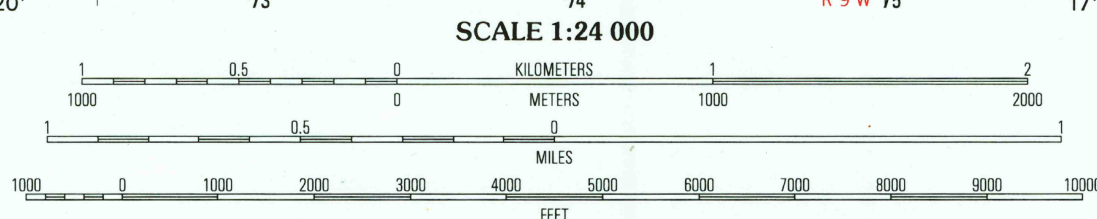
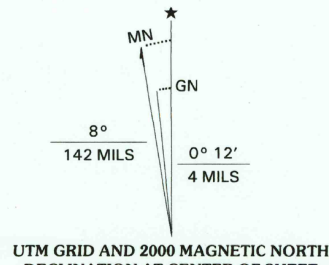


U.S. DEPARTMENT OF THE INTERIOR
U.S. GEOLOGICAL SURVEY

MENTOR QUADRANGLE
OHIO
7.5-MINUTE SERIES (TOPOGRAPHIC)



Produced by the United States Geological Survey
Topography compiled 1953. Planimetry derived from imagery taken 1974 and other sources. Public Land Survey System and survey control current as of 1963.
Selected hydrographic data compiled from NOS Chart 34 (1958). This information is not intended for navigational purposes.
North American Datum of 1983 (NAD 83). Projection and 1000-meter grid: Universal Transverse Mercator, zone 17. 2500-meter ticks: Ohio Coordinate System of 1983 (north zone). North American Datum of 1927 (NAD 27) is shown by dashed corner ticks. The values of the shift between NAD 83 and NAD 27 for 7.5-minute intersections are obtainable from National Geodetic Survey NADCON software.
There may be private inholdings within the boundaries of the National or State reservations shown on this map. Entire area lies within the Connecticut Western Reserve. Land lines established by private subdivision of the Connecticut Western Reserve. Landmark buildings verified 1963.



QUADRANGLE LOCATION

ROAD CLASSIFICATION	
Primary highway hard surface	Light-duty road, hard or improved surface
Secondary highway hard surface	Unimproved road
Interstate Route	U.S. Route
	State Route

1	2	3
4	5	6
7	8	9

ADJOINING 7.5' QUADRANGLE NAMES

MENTOR, OH
1994

NIMA 4767 III NE-SERIES V852

RECEIVED

FEB 28 2001

USGS NWU
HISTORICAL MAP ARCHIVES

