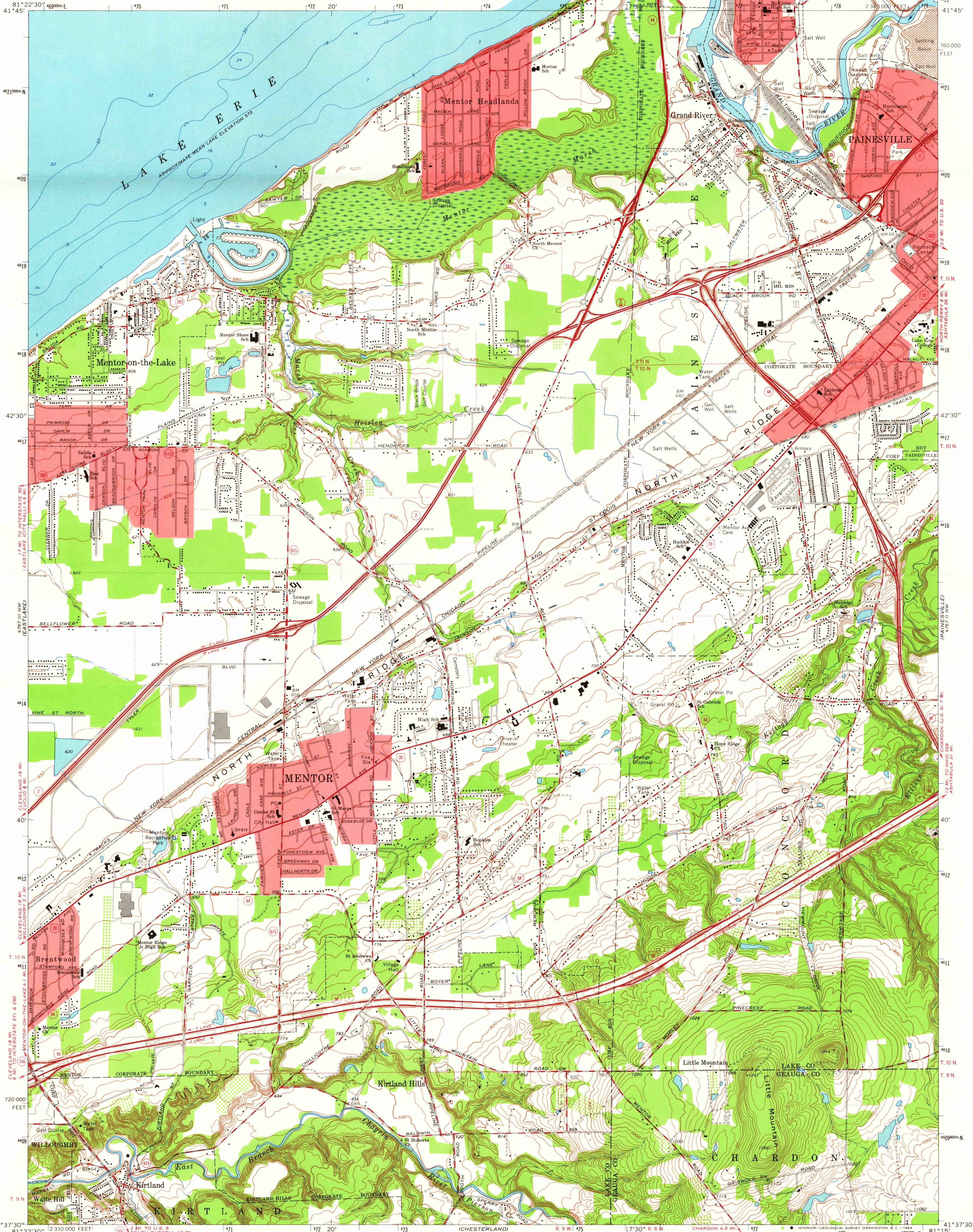
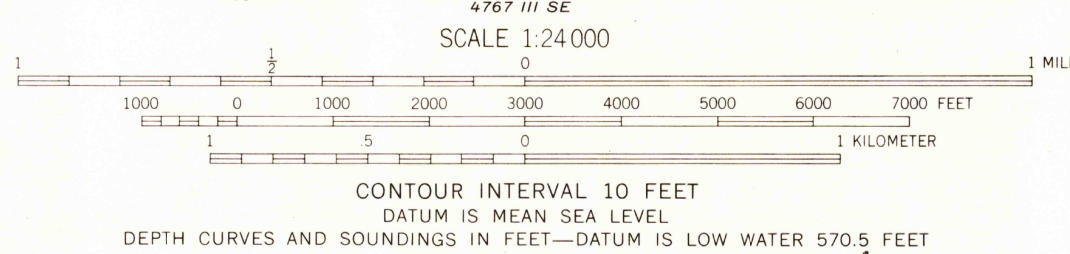


UNITED STATES
DEPARTMENT OF THE INTERIOR
GEOLOGICAL SURVEY

MENTOR QUADRANGLE
OHIO
7.5 MINUTE SERIES (TOPOGRAPHIC)
NE/4 MENTOR 15' QUADRANGLE



Mapped, edited, and published by the Geological Survey
Revised in cooperation with State of Ohio agencies
Control by USGS, USC&GS, and U.S. Lake Survey
Topography by photogrammetric methods from aerial photographs taken
1952 and planetable surveys 1953. Revised from aerial photographs
taken 1962. Field checked 1963
Selected hydrographic data compiled from U.S. Lake Survey Chart 34
(1958). This information is not intended for navigational purposes
Polyconic projection. 1927 North American datum
10,000-foot grid based on Ohio coordinate system, north zone
1000-meter Universal Transverse Mercator grid ticks, zone 17,
shown in blue
Fine red dashed lines indicate selected fence and field lines where
generally visible on aerial photographs. This information is unchecked
Red tint indicates areas in which only landmark buildings are shown
Entire area lies within the Connecticut Western Reserve. Land lines
established by private subdivision of the Connecticut Western Reserve



ROAD CLASSIFICATION	
Heavy-duty	Light-duty
Medium-duty	Unimproved dirt
Interstate Route	U.S. Route
	State Route

USGS
Historical File
Topographic Division
USGS

MENTOR, OHIO
NE/4 MENTOR 15' QUADRANGLE
N4137.5—W8115.7.5
1963
AMS 4767 III NE—SERIES V852

OCT 21964

3145