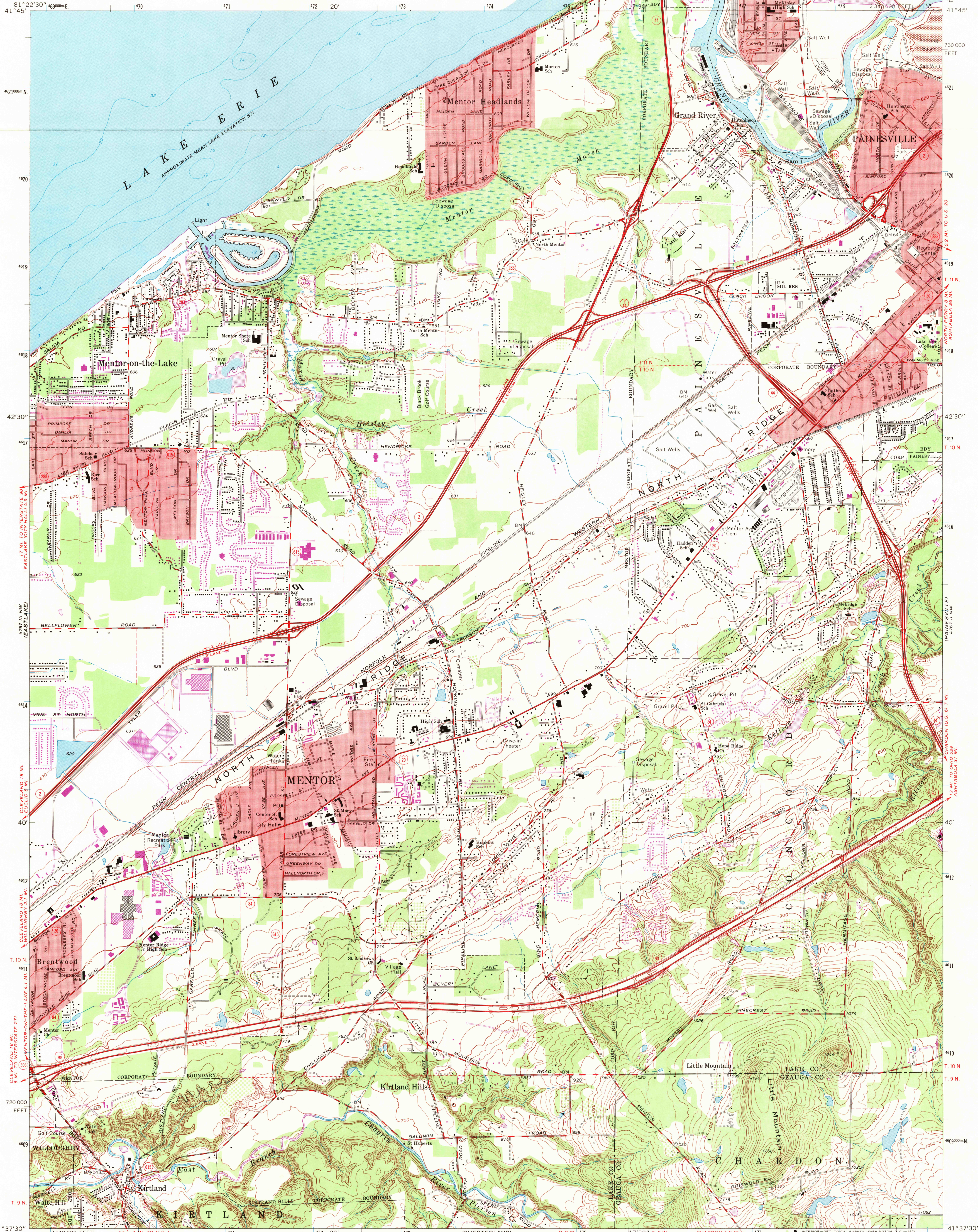


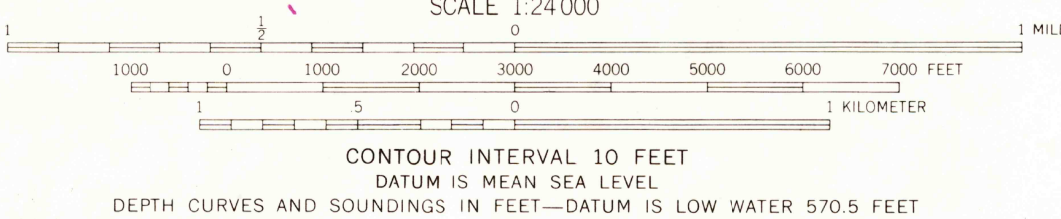
UNITED STATES
DEPARTMENT OF THE INTERIOR
GEOLOGICAL SURVEY

MENTOR QUADRANGLE
OHIO
7.5 MINUTE SERIES (TOPOGRAPHIC)
NE/4 MENTOR 15' QUADRANGLE



Maped, edited, and published by the Geological Survey
Revised in cooperation with State of Ohio agencies
Control by USGS, USC&GS, and U.S. Lake Survey
Topography by photogrammetric methods from aerial photographs taken
1952 and planetable surveys 1953. Revised from aerial photographs
taken 1962. Field checked 1963.
Selected hydrographic data compiled from U.S. Lake Survey Chart 34
(1958). This information is not intended for navigational purposes.
Polyconic projection. 1927 North American datum.
10,000-foot grid based on Ohio coordinate system, north zone.
1000-meter Universal Transverse Mercator grid ticks, zone 17,
shown in blue.
Fine red dashed lines indicate selected fence and field lines where
generally visible on aerial photographs. This information is uncheckd.
Red tint indicates areas in which only landmark buildings are shown.
Entire area lies within the Connecticut Western Reserve. Land lines
established by private subdivision of the Connecticut Western Reserve.

UTM GRID AND 1970 MAGNETIC NORTH
DECLINATION AT CENTER OF SHEET



USGS
Historical File
Topographic Division

ROAD CLASSIFICATION
Heavy-duty ——— Light-duty ———
Medium-duty ——— Unimproved dirt ———
Interstate Route — U.S. Route — State Route —

QUADRANGLE LOCATION
Revisions shown in purple compiled in cooperation with
State of Ohio agencies from aerial photographs taken 1970.
This information not field checked.

MENTOR, OHIO
NE/4 MENTOR 15' QUADRANGLE
N4137.5—W8115.7/5

1963
PHOTOREVISED 1970
AMS 4767 III NE—SERIES V852

FILE COPY
TOPOGRAPHIC DIVISION