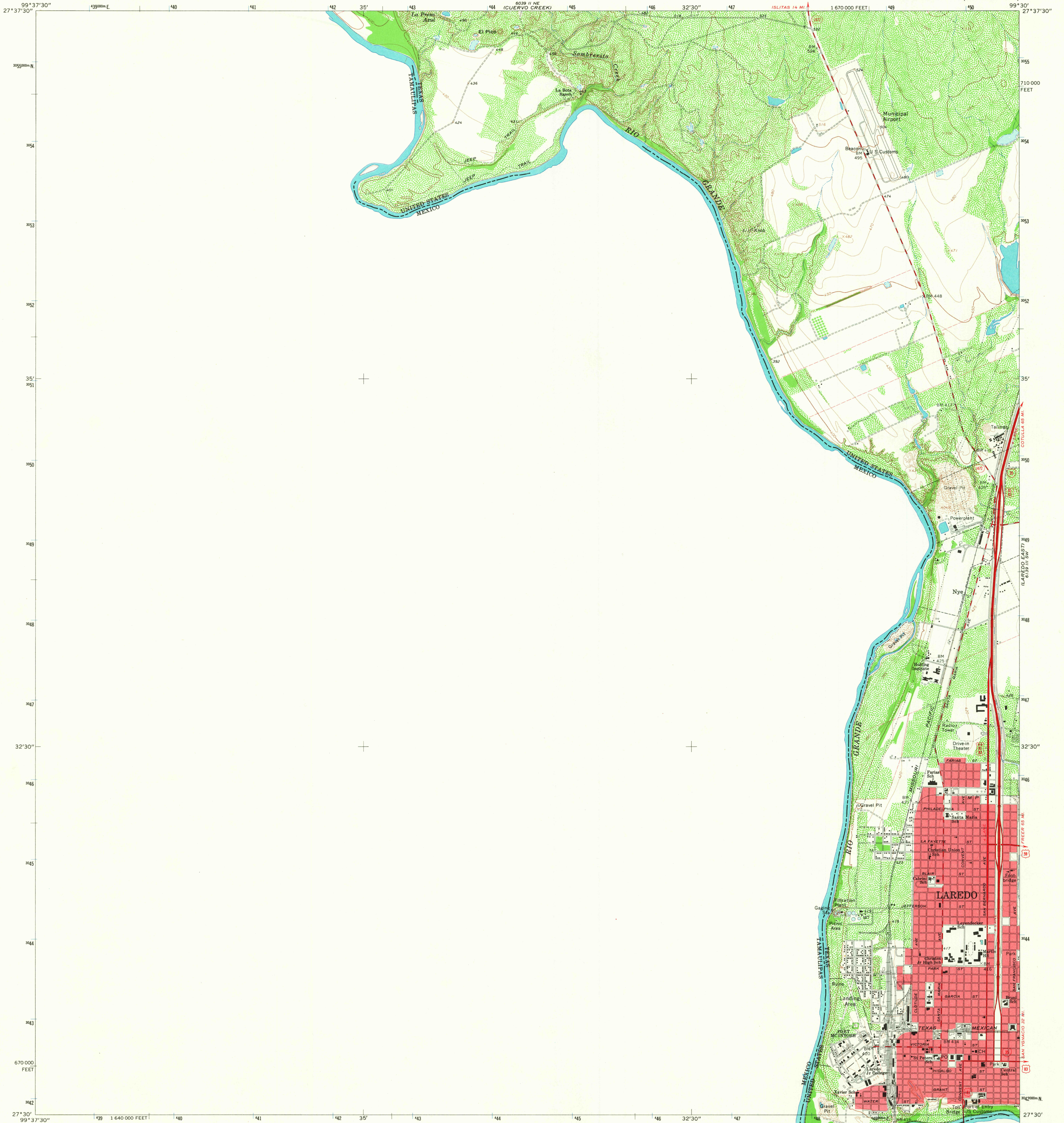
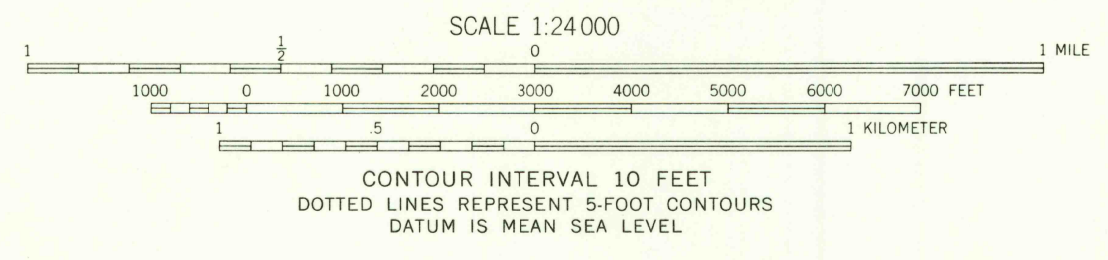
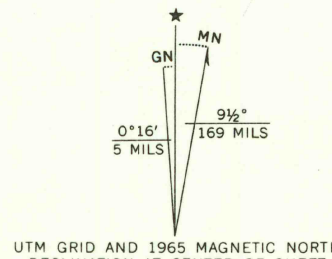


UNITED STATES  
DEPARTMENT OF THE INTERIOR  
GEOLOGICAL SURVEY

LAREDO WEST QUADRANGLE  
TEXAS—WEBB CO.  
7.5 MINUTE SERIES (TOPOGRAPHIC)



Maped, edited, and published by the Geological Survey  
Control by USGS, USC&GS, and International Boundary  
and Water Commission  
Topography by photogrammetric methods from aerial  
photographs taken 1964. Field checked 1965  
Polyconic projection. 1927 North American datum  
10,000-foot grid based on Texas coordinate system,  
south zone  
1000-meter Universal Transverse Mercator grid ticks,  
zone 14, shown in blue  
Red tint indicates areas in which only landmark buildings are shown  
Fine red dashed lines indicate selected fence lines  
International boundary line not completely defined at date  
of map, due to changes in river



THIS MAP COMPLIES WITH NATIONAL MAP ACCURACY STANDARDS  
FOR SALE BY U. S. GEOLOGICAL SURVEY, DENVER, COLORADO 80225, OR WASHINGTON, D. C. 20242  
A FOLDER DESCRIBING TOPOGRAPHIC MAPS AND SYMBOLS IS AVAILABLE ON REQUEST

U.S.G.S.  
FILE COPY  
TOPOGRAPHIC DIVISION

ROAD CLASSIFICATION  
Heavy-duty ——— Light-duty ———  
Medium-duty ——— Unimproved dirt ———  
Interstate Route U.S. Route State Route

LAREDO WEST, TEX.  
N2730—W9930/7.5

1965  
AMS 6039 II SE—SERIES V882

3080  
DEC 6 1967