

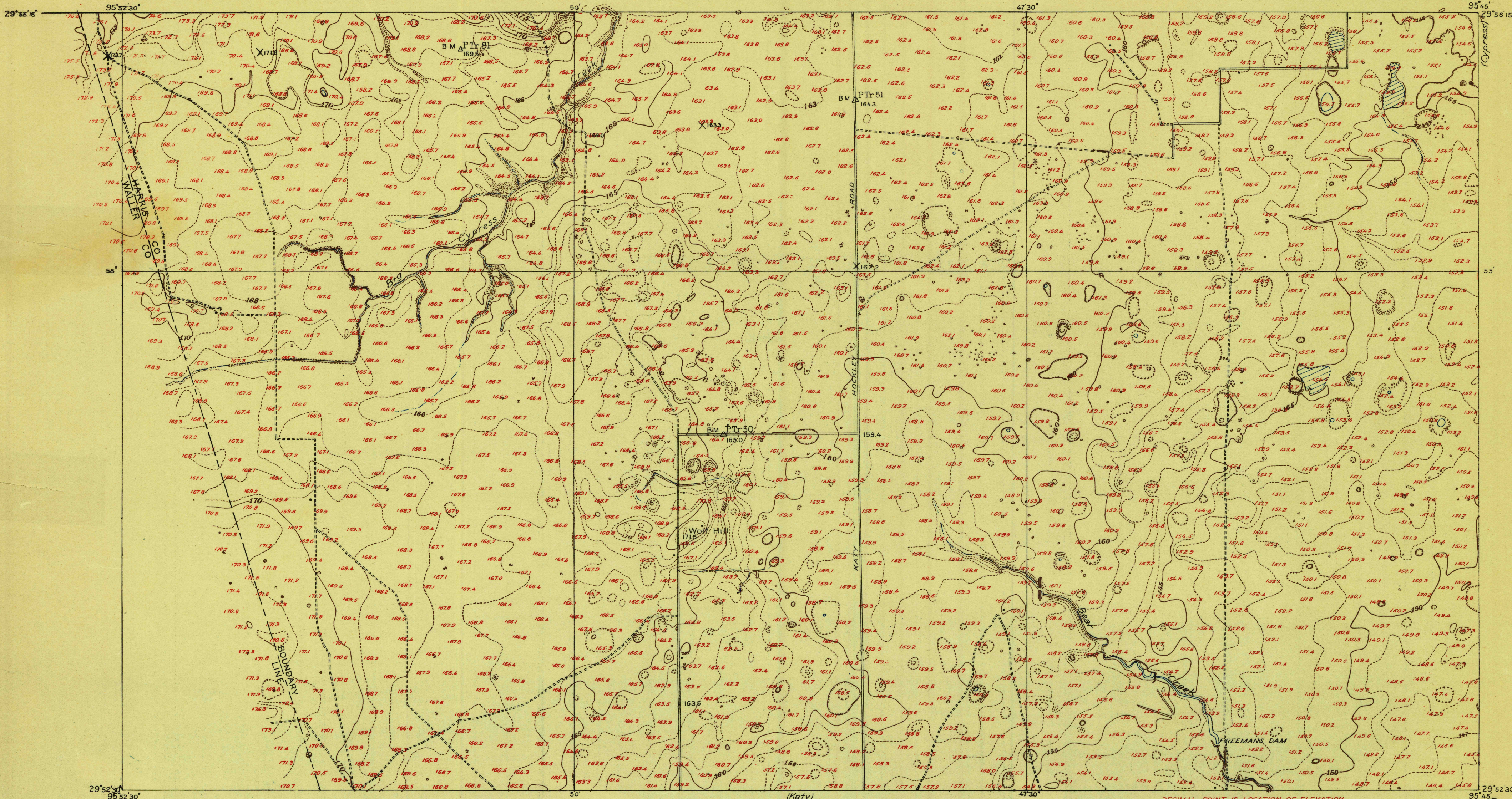
DEPARTMENT OF THE INTERIOR
FRANKLIN K. LANE, SECRETARY
U. S. GEOLOGICAL SURVEY
GEORGE OTIS SMITH, DIRECTOR

TOPOGRAPHY
HARRIS COUNTY, TEXAS
W. H. WARD, COUNTY JUDGE
W. H. LLOYD, J. A. SMITH, W. H. KISER, D. BARKER
COUNTY COMMISSIONERS

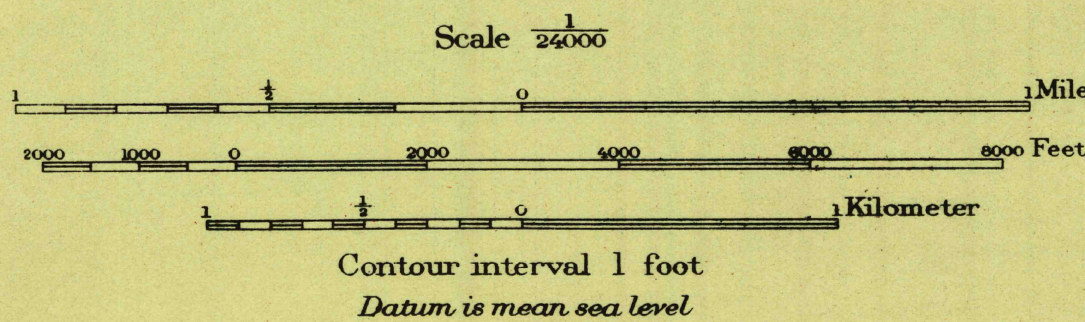
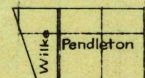
TEXAS
HARRIS COUNTY
SWANSON QUADRANGLE

Advance sheet.
Subject to correction.

INSPECTION FILES
TOPOGRAPHY.



R. B. Marshall, Chief Geographer
Sledge Tatum, Geographer in charge
Topography by J. H. Wilke and T. P. Pendleton
Control by E. L. McNair and R. R. Monbeck
Surveyed in 1915
SURVEYED IN COOPERATION WITH HARRIS COUNTY, TEXAS



USGS
Historical File
Topographic Division

TRUE NORTH
MAGNETIC NORTH
APPROXIMATE MEAN
DECLINATION 1915

SWANSON, TEX.