

DEPARTMENT OF THE INTERIOR
FRANKLIN K. LANE, SECRETARY
U. S. GEOLOGICAL SURVEY
GEORGE OTIS SMITH, DIRECTOR

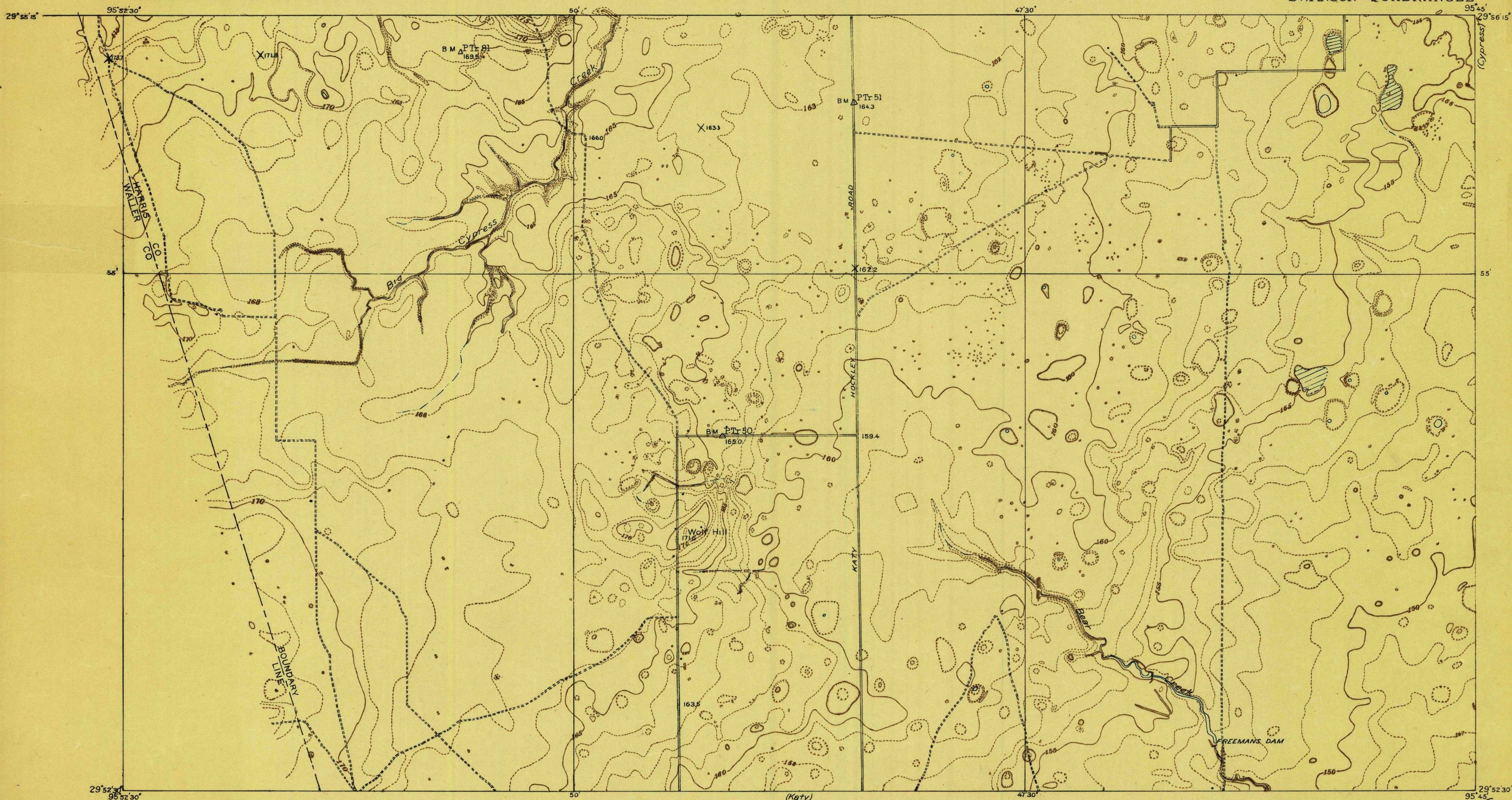
TOPOGRAPHY

HARRIS COUNTY, TEXAS
W. H. WARD, COUNTY JUDGE
W. H. LLOYD, J. A. SMITH, W. H. KISER, D. BARKER
COUNTY COMMISSIONERS

Advance sheet.
Subject to correction.

INSPECTION FILES
TOPOGRAPHY.

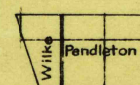
TEXAS
HARRIS COUNTY
SWANSON QUADRANGLE



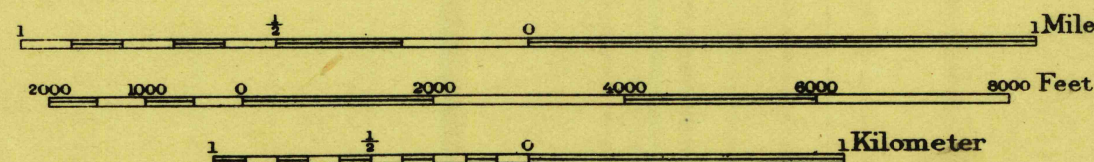
R. B. Marshall, Chief Geographer
Sledge Tatum, Geographer in charge
Topography by J. H. Wilke and T. P. Pendleton
Control by E. L. McNair and R. R. Monbeck

Surveyed in 1915

SURVEYED IN COOPERATION WITH HARRIS COUNTY, TEXAS



Scale $\frac{1}{24000}$



Contour interval 1 foot
Datum is mean sea level

USGS
Historical File
Topographic Division

TRUE NORTH
MAGNETIC NORTH
APPROXIMATE MEAN
DECLINATION 1915

SWANSON, TEX.