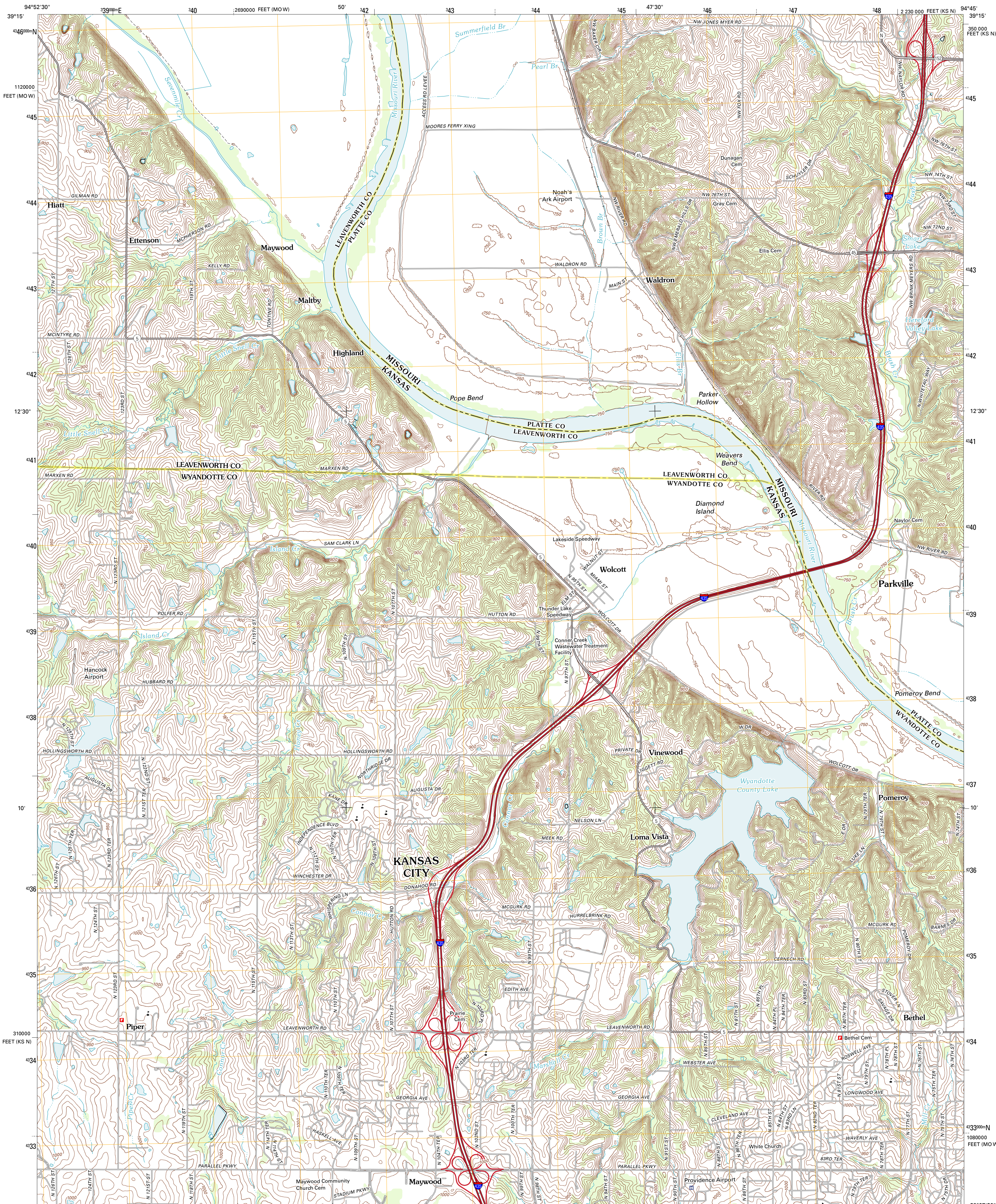




U.S. DEPARTMENT OF THE INTERIOR
U. S. GEOLOGICAL SURVEY

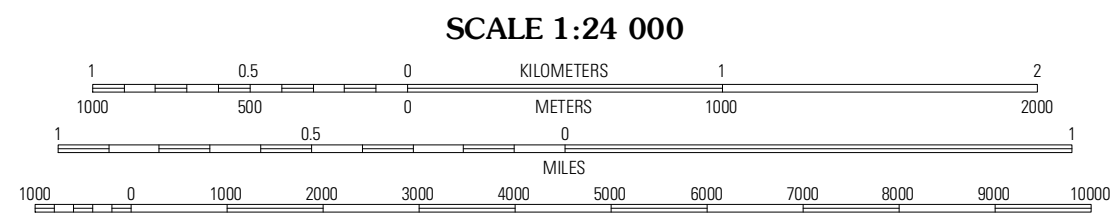
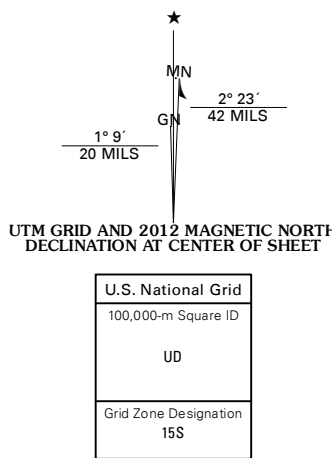


WOLCOTT QUADRANGLE
KANSAS-MISSOURI
7.5-MINUTE SERIES



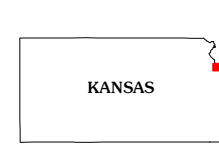
Produced by the United States Geological Survey
North American Datum of 1983 (NAD83)
World Geodetic System of 1984 (WGS84). Projection and
1 000-meter grid. Universal Transverse Mercator, Zone 15S
10 000-foot ticks: Kansas Coordinate System of 1983 (north
zone), Missouri Coordinate System of 1983 (west zone)

Imagery:.....NAIP, June 2010
Roads:.....©2006-2011 TomTom
Names:.....GNIS, 2012
Hydrography:.....National Hydrography Dataset, 2010
Contours:.....National Elevation Dataset, 2008
Boundaries:.....Census, IBWC, IBC, USGS, 1972 - 2012



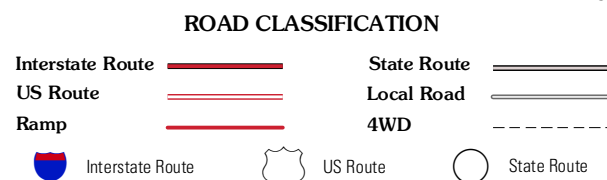
CONTOUR INTERVAL 10 FEET
NORTH AMERICAN VERTICAL DATUM OF 1988

This map was produced to conform with the
National Geospatial Program US Topo Product Standard, 2011.
A metadata file associated with this product is draft version 0.6.4



Leavenworth	Platte City	Ferretview
Basehor	Wolcott	Parkville
Bonner Springs	Edwardsville	Shawnee

ADJOINING 7.5' QUADRANGLES



WOLCOTT, KS-MO
2012