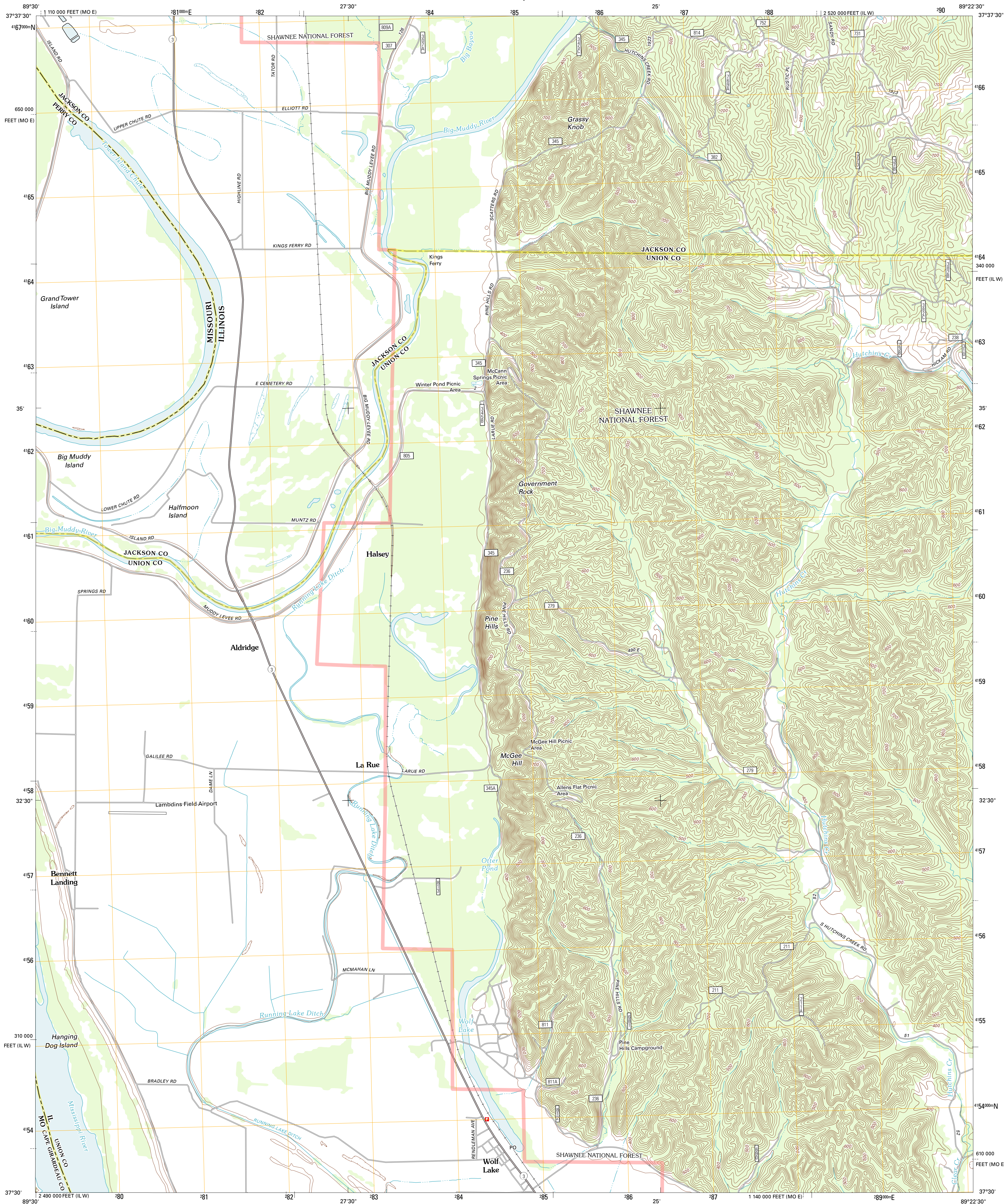




U.S. DEPARTMENT OF THE INTERIOR
U. S. GEOLOGICAL SURVEY



WOLF LAKE QUADRANGLE
ILLINOIS-MISSOURI
7.5-MINUTE SERIES



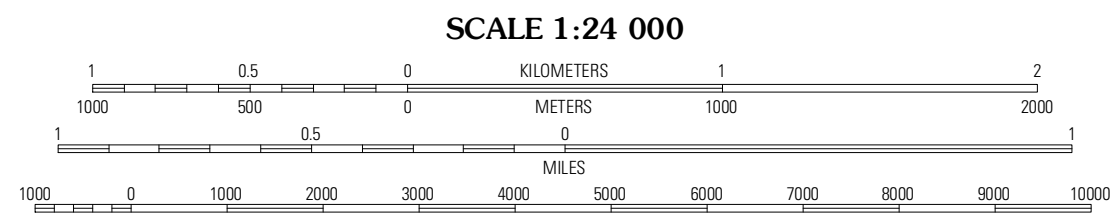
Produced by the United States Geological Survey
North American Datum of 1983 (NAD83)
World Geodetic System of 1984 (WGS84). Projection and
1 000-meter grid: Universal Transverse Mercator, Zone 16S
10 000-foot ticks: Illinois Coordinate System of 1983 (west
zone), Missouri Coordinate System of 1983 (east zone)

Imagery.....NAIP, August 2011
Roads.....©2006-2011 TomTom
Roads within US Forest Service Lands
with limited Forest Service updates, 2009
Names.....GNIS, 2011
Hydrography.....National Hydrography Dataset, 2011
Contours.....National Elevation Dataset, 2007
Boundaries.....Census, IBWC, IBC, USGS, 1972 - 2010

UTM GRID AND 2012 MAGNETIC NORTH
DECLINATION AT CENTER OF SHEET

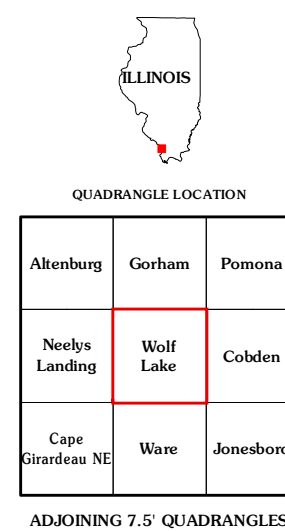
1° 30' N
27 MILS
1° 28' N
26 MILS

U.S. National Grid
100,000-m Square ID
86
Grid Zone Designation
16S



CONTOUR INTERVAL 20 FEET
NORTH AMERICAN VERTICAL DATUM OF 1988

This map was produced to conform with the
National Geospatial Program US Topo Product Standard, 2011.
A metadata file associated with this product is draft version 0.6.3



ROAD CLASSIFICATION

Interstate Route
US Route
Ramp
FS Primary Route
FS Passenger Route
FS High Clearance Route

State Route
Local Road
4WD
State Route
State Route

Check with local Forest Service unit
for current travel conditions and restrictions.

WOLF LAKE, IL-MO
2012