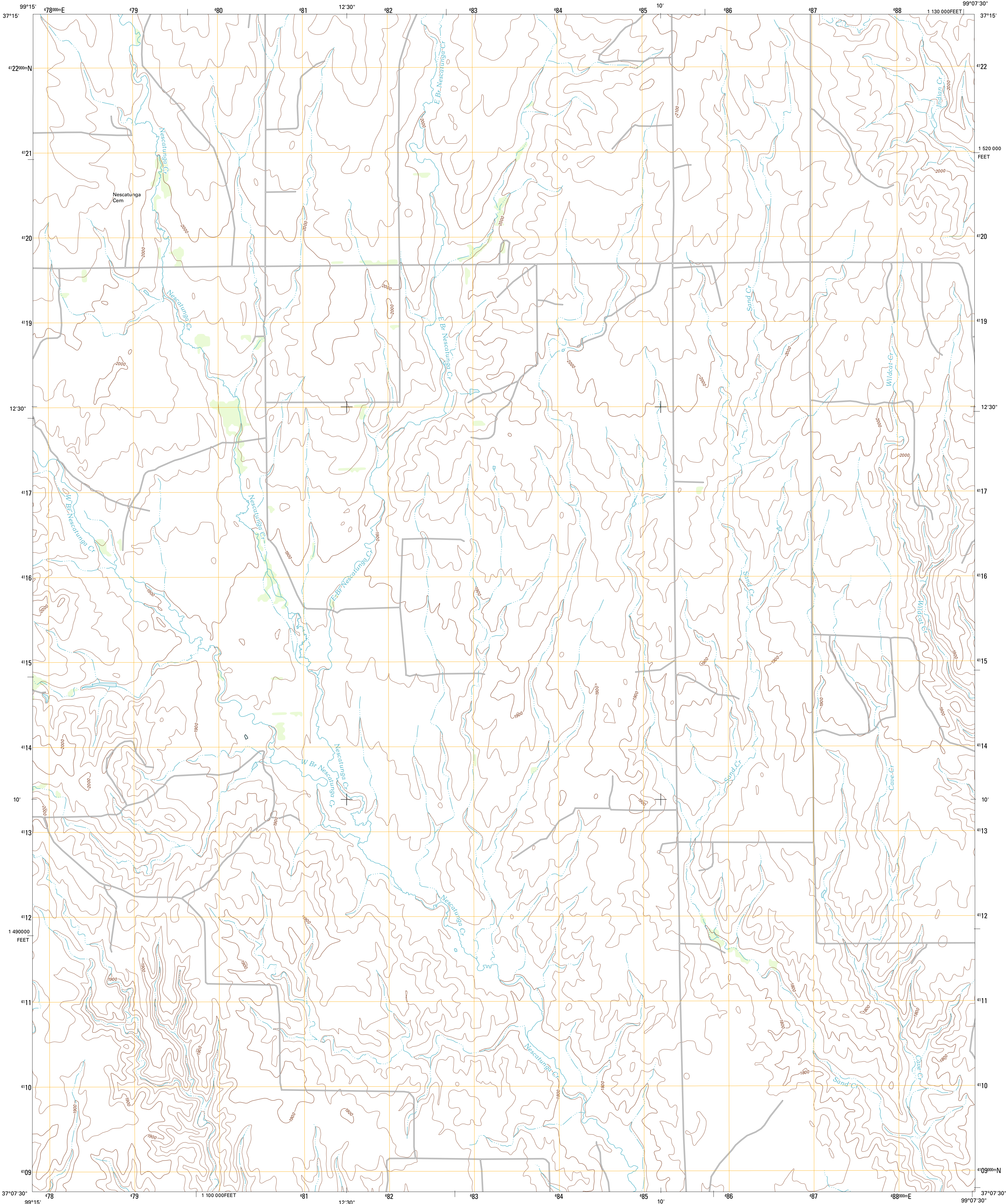




U.S. DEPARTMENT OF THE INTERIOR
U. S. GEOLOGICAL SURVEY

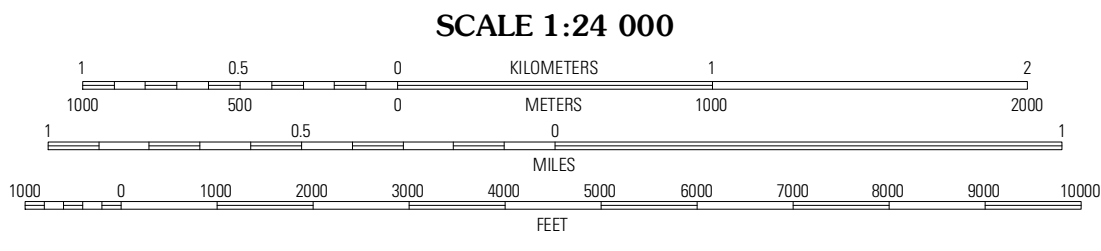
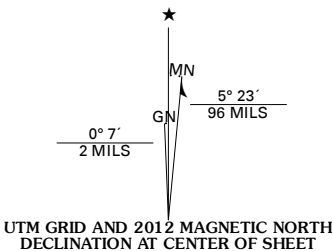


NESCATUNGA CREEK NORTH QUADRANGLE
KANSAS-COMANCHE CO.
7.5-MINUTE SERIES

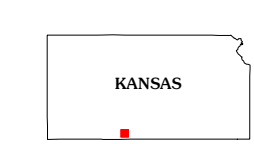


Produced by the United States Geological Survey
North American Datum of 1983 (NAD83)
World Geodetic System of 1984 (WGS84). Projection and
1 000-meter grid: Universal Transverse Mercator, Zone 14S
10 000-foot ticks: Kansas Coordinate System of 1983 (south
zone)

Imagery.....NAIP, June 2010
Roads.....©2006-2011 TomTom
Names.....GNIS, 2012
Hydrography.....National Hydrography Dataset, 2010
Contours.....National Elevation Dataset, 2006
Boundaries.....Census, BWC, IBC, USGS, 1972-2012



CONTOUR INTERVAL 20 FEET
NORTH AMERICAN VERTICAL DATUM OF 1988
This map was produced to conform with the
National Geospatial Program US Topo Product Standard, 2011.
A metadata file associated with this product is draft version 0.6.4



QUADRANGLE LOCATION		
Cobwater	Wilmore	Wilmore SE
Protection NE	Nescatunga Creek North	Indian Creek
Buttermilk	Nescatunga Creek South	Fancy Canyon

ROAD CLASSIFICATION	
Interstate Route	State Route
US Route	Local Road
Ramp	4WD

NESCATUNGA CREEK NORTH, KS
2012