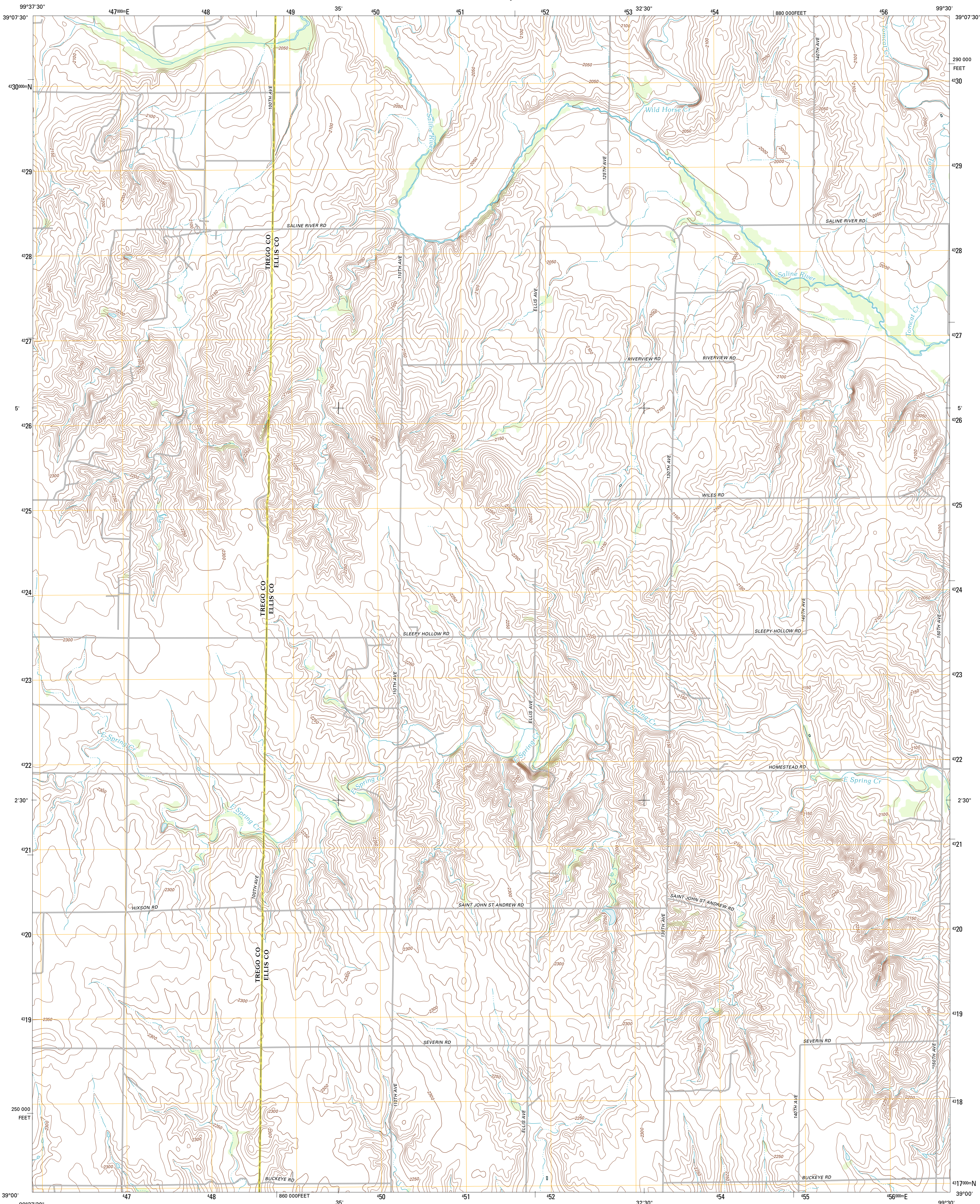




U.S. DEPARTMENT OF THE INTERIOR
U. S. GEOLOGICAL SURVEY



MOUTH OF WILD HORSE CREEK QUADRANGLE
KANSAS
7.5-MINUTE SERIES

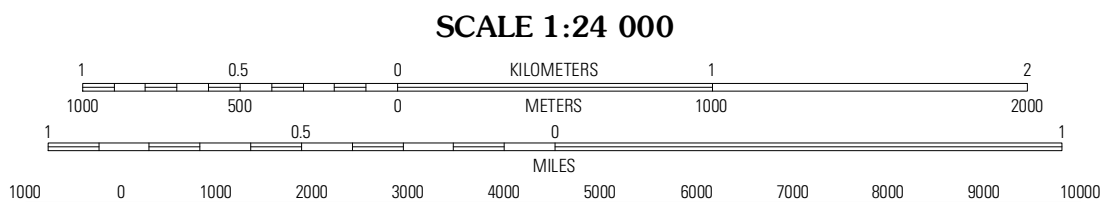


Produced by the United States Geological Survey
North American Datum of 1983 (NAD83)
World Geodetic System of 1984 (WGS84). Projection and
1 000-meter grid. Universal Transverse Mercator. Zone 14S
10 000-foot ticks: Kansas Coordinate System of 1983 (north
zone)

Imagery.....NAIP, July 2010
Roads.....©2006-2011 TomTom
Names.....GNIS, 2012
Hydrography.....National Hydrography Dataset, 2010
Contours.....National Elevation Dataset, 2012
Boundaries.....Census, IBWC, IBC, USGS, 1972 -2012

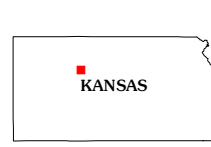
UTM GRID AND 2012 MAGNETIC NORTH
DECLINATION AT CENTER OF SHEET

U.S. National Grid
100,000m Square ID
MJ
Grid Zone Designation
14S



CONTOUR INTERVAL 10 FEET
NORTH AMERICAN VERTICAL DATUM OF 1988

This map was produced to conform with the
National Geospatial Program US Topo Product Standard, 2011.
A metadata file associated with this product is draft version 0.6.4



Redline Church	Wild Horse Creek	Zurich
Mouth of Shaw Creek	Mouth of Wild Horse Creek	Platteville SW
Ogallah	Ellis	Yocemento

ADJOINING 7.5' QUADRANGLES

ROAD CLASSIFICATION
Interstate Route
US Route
Ramp
State Route
Local Road
4WD

MOUTH OF WILD HORSE CREEK, KS
2012