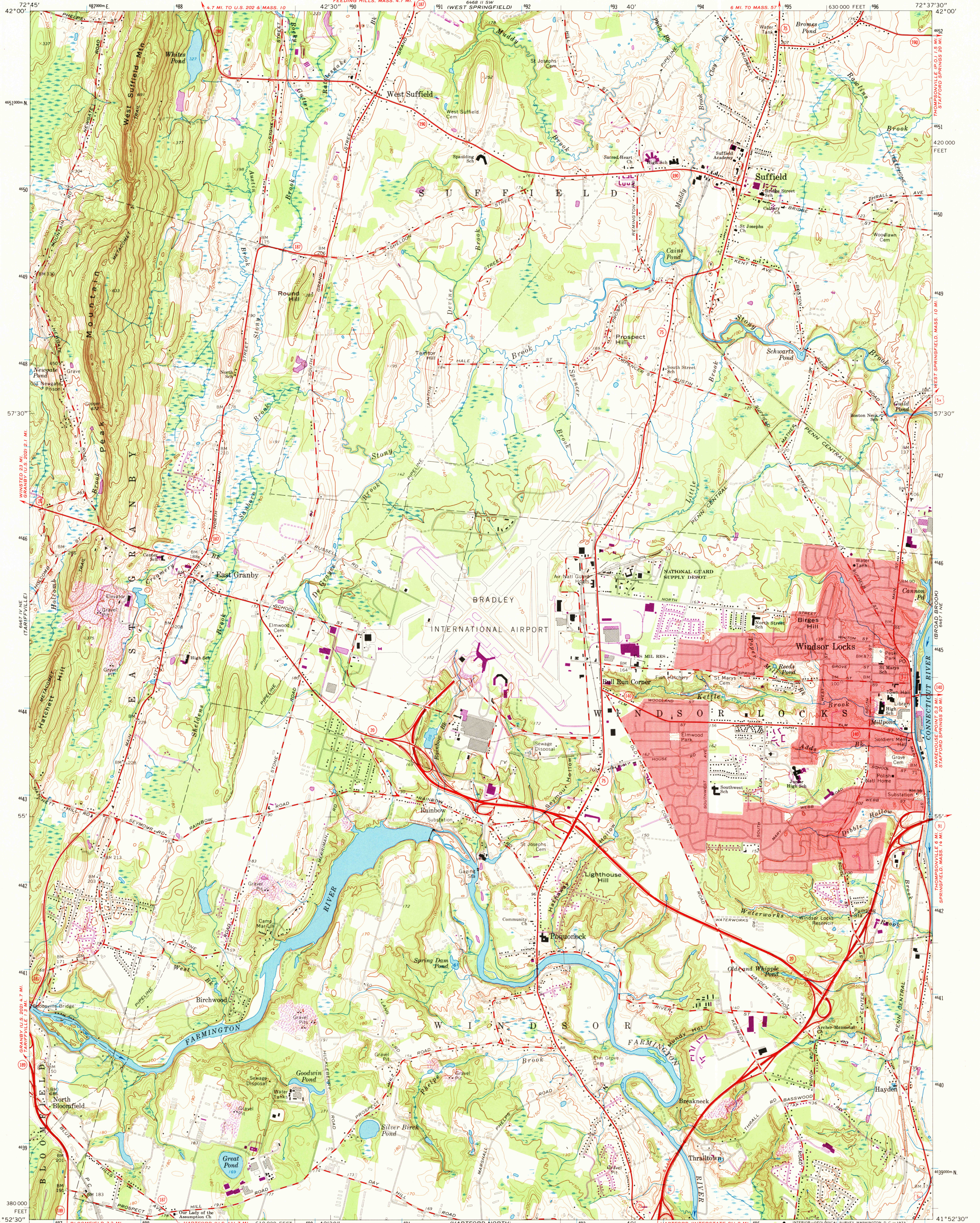
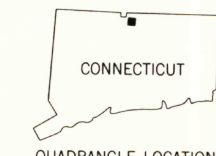
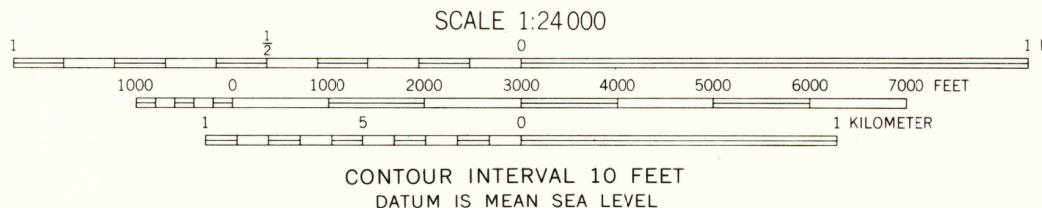
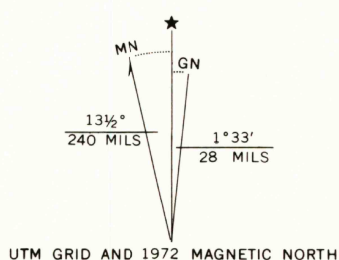


UNITED STATES
DEPARTMENT OF THE INTERIOR
GEOLOGICAL SURVEY

WINDSOR LOCKS QUADRANGLE
CONNECTICUT—HARTFORD CO.
7.5 MINUTE SERIES (TOPOGRAPHIC)



Maped, edited, and published by the Geological Survey
Revised in cooperation with Connecticut Highway Department
Control by USGS, USC&GS, and Connecticut Geodetic Survey
Planimetry by photogrammetric methods from aerial photographs
taken 1940. Topography by planetable surveys 1943. Revised 1964
Polyconic projection. 1927 North American datum
10,000-foot grid based on Connecticut coordinate system
1000-meter Universal Transverse Mercator grid ticks, zone 18,
shown in blue
Fine red dashed lines indicate selected fence and field lines where
generally visible on aerial photographs. This information is unchecked
Red tint indicates area in which only landmark buildings are shown



ROAD CLASSIFICATION
Heavy-duty ——— Light-duty ———
Medium-duty ——— Unimproved dirt ———
Interstate Route U.S. Route State Route

USGS
Historical File
Topographic Division

5 SEP 1973
WINDSOR LOCKS, CONN.
N4152.5—W7237.5/7.5

THIS MAP COMPLIES WITH NATIONAL MAP ACCURACY STANDARDS
FOR SALE BY U.S. GEOLOGICAL SURVEY, WASHINGTON, D.C. 20242
A FOLDER DESCRIBING TOPOGRAPHIC MAPS AND SYMBOLS IS AVAILABLE ON REQUEST

Revisions shown in purple compiled in cooperation with
Connecticut Highway Department from aerial photographs
taken 1972. This information not field checked

1964
PHOTOREVISED 1972
AMS 6467 1 NW—SERIES V816

5250