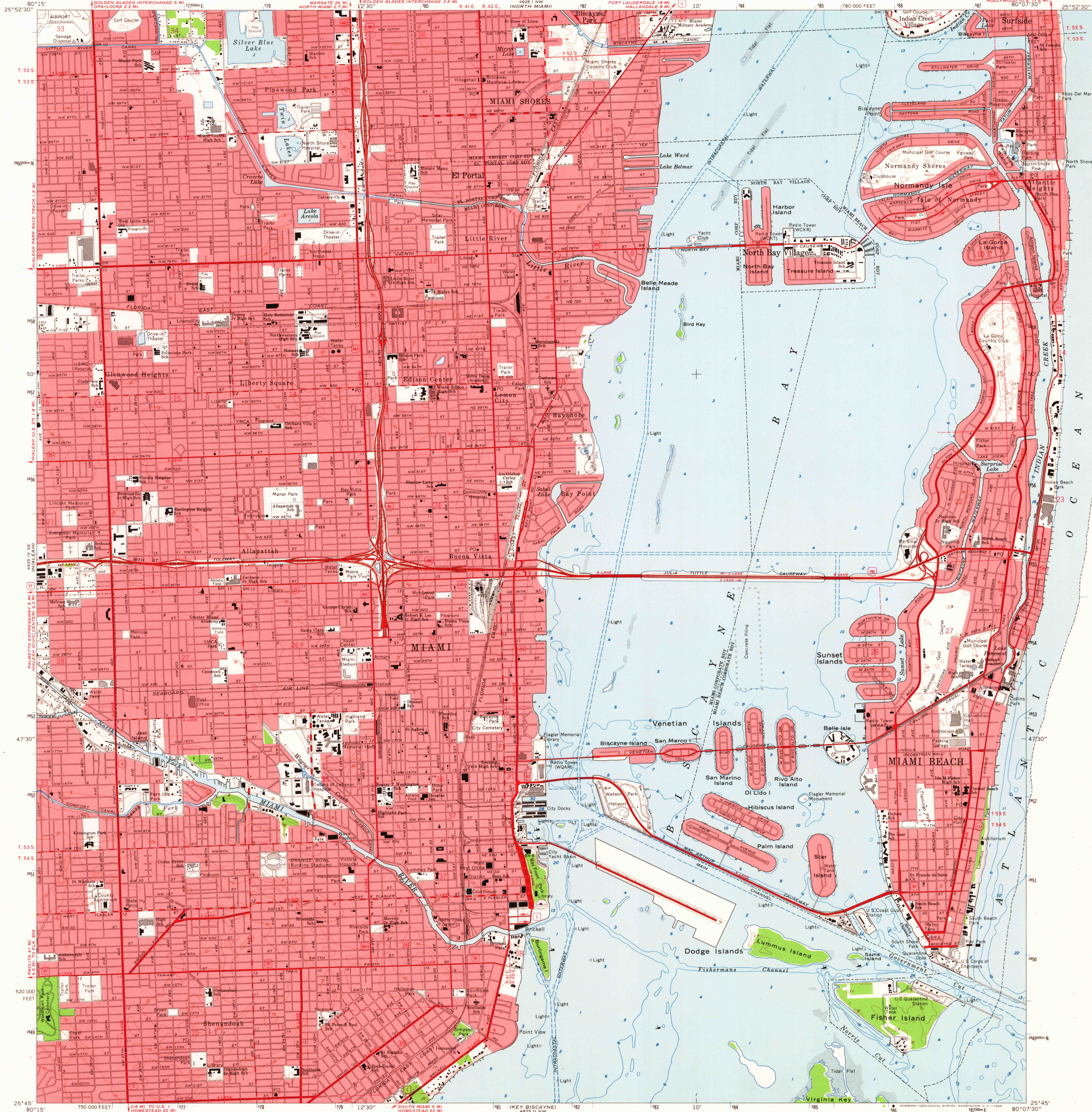
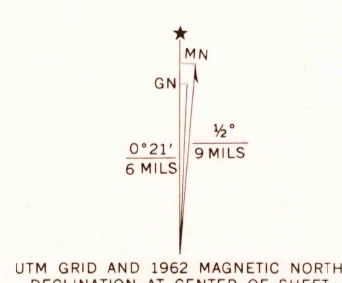


UNITED STATES
DEPARTMENT OF THE INTERIOR
GEOLOGICAL SURVEY

MIAMI QUADRANGLE
FLORIDA-DADE CO.
7.5 MINUTE SERIES (TOPOGRAPHIC)



Mapped by the U. S. Coast and Geodetic Survey
Edited and published by the Geological Survey
Control by USCGS, USCE, and Florida Geodetic Survey
Planimetry by photogrammetric methods from aerial photographs
taken 1942 and 1945. Topography by planetable surveys by Florida
Geodetic Survey 1936. Revised and supplemented by planetable surveys
by U. S. Coast and Geodetic Survey 1945. Revised by the Geological
Survey from aerial photographs taken 1961. Field checked 1962.
Selected hydrographic data compiled from USCGS Charts 547, 847, and
848 (1962). This information is not intended for navigational purposes
Polyconic projection. 1927 North American datum
10,000-foot grid based on Florida coordinate system, east zone
1000-meter Universal Transverse Mercator grid ticks,
zone 17, shown in blue
Red tint indicates areas in which only landmark buildings are shown
Where omitted, land lines have not been established
or are not shown because of insufficient data



SCALE 1:24,000
1 000 0 1000 2000 3000 4000 5000 6000 7000 FEET
1 KILOMETER
CONTOUR INTERVAL 5 FEET
DATUM IS MEAN SEA LEVEL
DEPTH CURVES AND SOUNDINGS IN FEET-DATUM IS MEAN LOW WATER
SHORELINE SHOWN REPRESENTS THE APPROXIMATE LINE OF MEAN HIGH WATER
THE MEAN RANGE OF TIDE IS APPROXIMATELY 2 FEET IN BISCAYNE BAY
AND 2.5 FEET IN THE ATLANTIC OCEAN
THIS MAP COMPLIES WITH NATIONAL MAP ACCURACY STANDARDS
FOR SALE BY U. S. GEOLOGICAL SURVEY, WASHINGTON 25, D. C.
A FOLDER DESCRIBING TOPOGRAPHIC MAPS AND SYMBOLS IS AVAILABLE ON REQUEST



USGS
Historical File
Topographic Division

ROAD CLASSIFICATION
Heavy-duty ——— Light-duty ———
Medium-duty ——— Unimproved dirt ———
Interstate Route U. S. Route State Route

MIAMI, FLA.
N2545-W8007.5/7.5

1962
AMS 4935 1 SW-SERIES V847