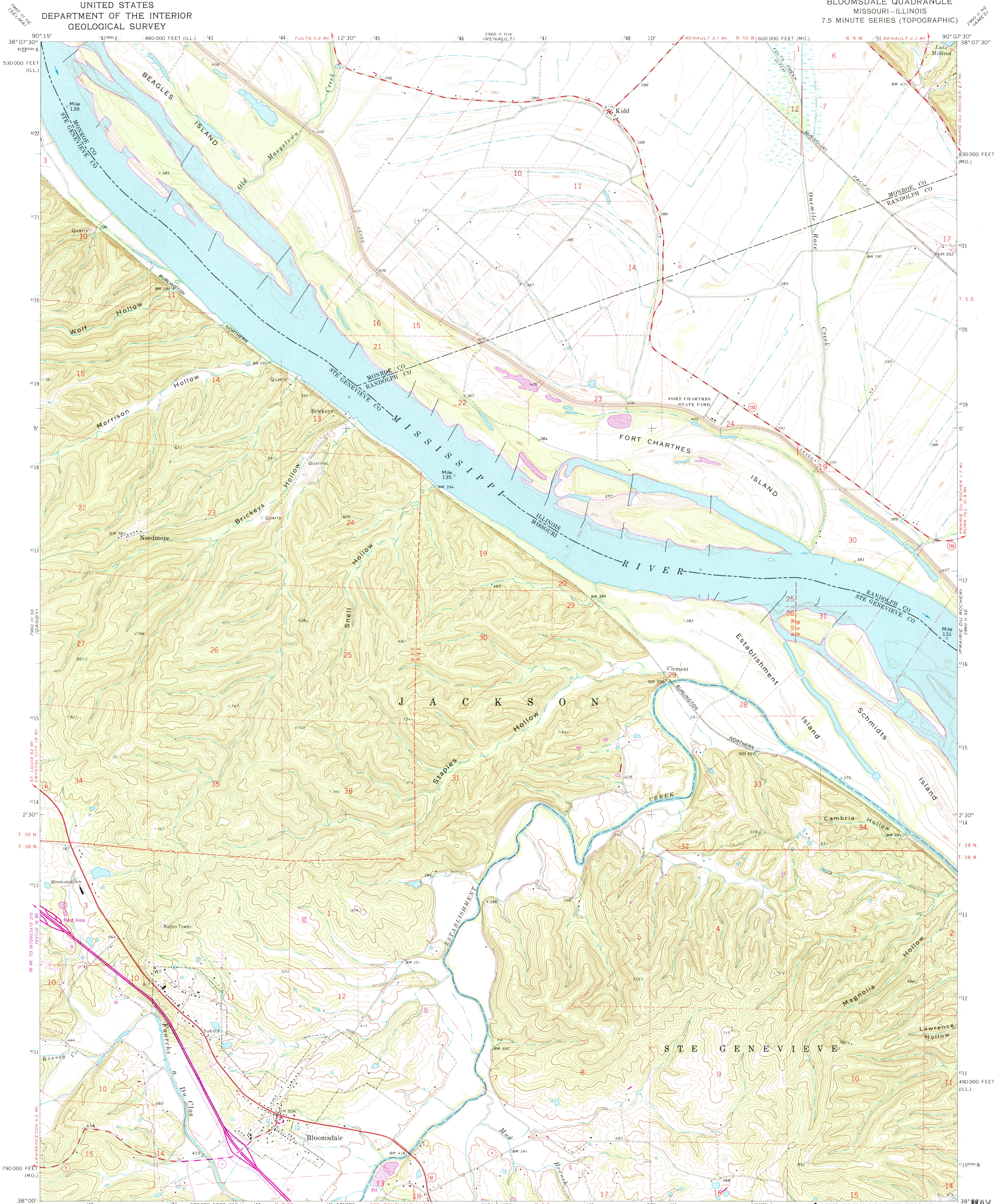


UNITED STATES  
DEPARTMENT OF THE INTERIOR  
GEOLOGICAL SURVEY

BLOOMSDALE QUADRANGLE  
MISSOURI-ILLINOIS  
7.5 MINUTE SERIES (TOPOGRAPHIC)



Mapped, edited, and published by the Geological Survey

Control by USGS and USC&GS

Topography by photogrammetric methods from aerial photographs taken 1968. Field checked 1970

Polyconic projection. 1927 North American datum.

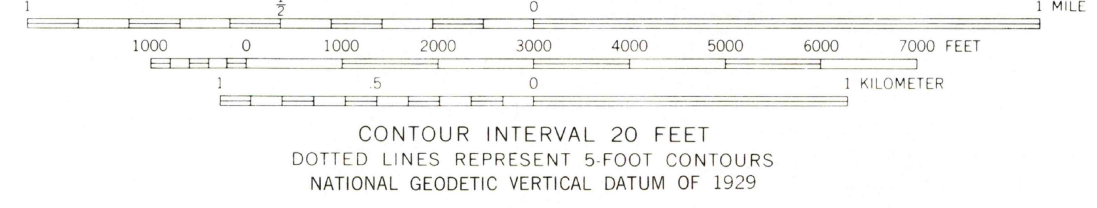
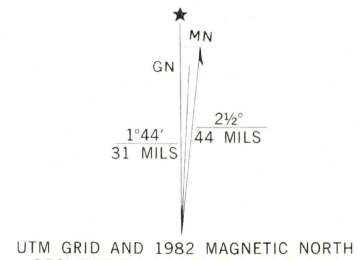
10,000-foot grids based on Missouri coordinate system, east zone and Illinois coordinate system, west zone

1000-meter Universal Transverse Mercator grid ticks, zone 15, shown in blue

Fine red dashed lines indicate selected fence and field lines where generally visible on aerial photographs. This information is unchecked

To place on the predicted North American Datum 1983 move the projection lines 2 meters south and 9 meters east as shown by dashed corner ticks

Revisions shown in purple compiled from aerial photographs taken 1980. Map edited 1982. This information not field checked



THIS MAP COMPLIES WITH NATIONAL MAP ACCURACY STANDARDS  
FOR SALE BY U. S. GEOLOGICAL SURVEY, DENVER, COLORADO 80225, OR RESTON, VIRGINIA 22092.,  
AND THE DIVISION OF GEOLOGY AND LAND SURVEY  
MISSOURI DEPARTMENT OF NATURAL RESOURCES, ROLLA, MISSOURI 65401  
AND STATE GEOLOGICAL SURVEY, URBANA, ILLINOIS 61801  
A FOLDER DESCRIBING TOPOGRAPHIC MAPS AND SYMBOLS IS AVAILABLE ON REQUEST

| ROAD CLASSIFICATION                          |  |
|--|--|
| Primary highway, all weather, hard surface   | Light-duty road, all weather, improved surface |
| Secondary highway, all weather, hard surface | Unimproved road, fair or dry weather           |
| Interstate Route                             | U. S. Route                                    |
|  | State Route                                    |



BLOOMSDALE, MO.-ILL.

N3800-W9007.5/7.5

1970

PHOTOREVISED 1982  
DMA 7960 II SW-SERIES V879

RETURN TO:  
USGS AND HISTORICAL MAP ARCHIVES

MAY 27 1982

2950