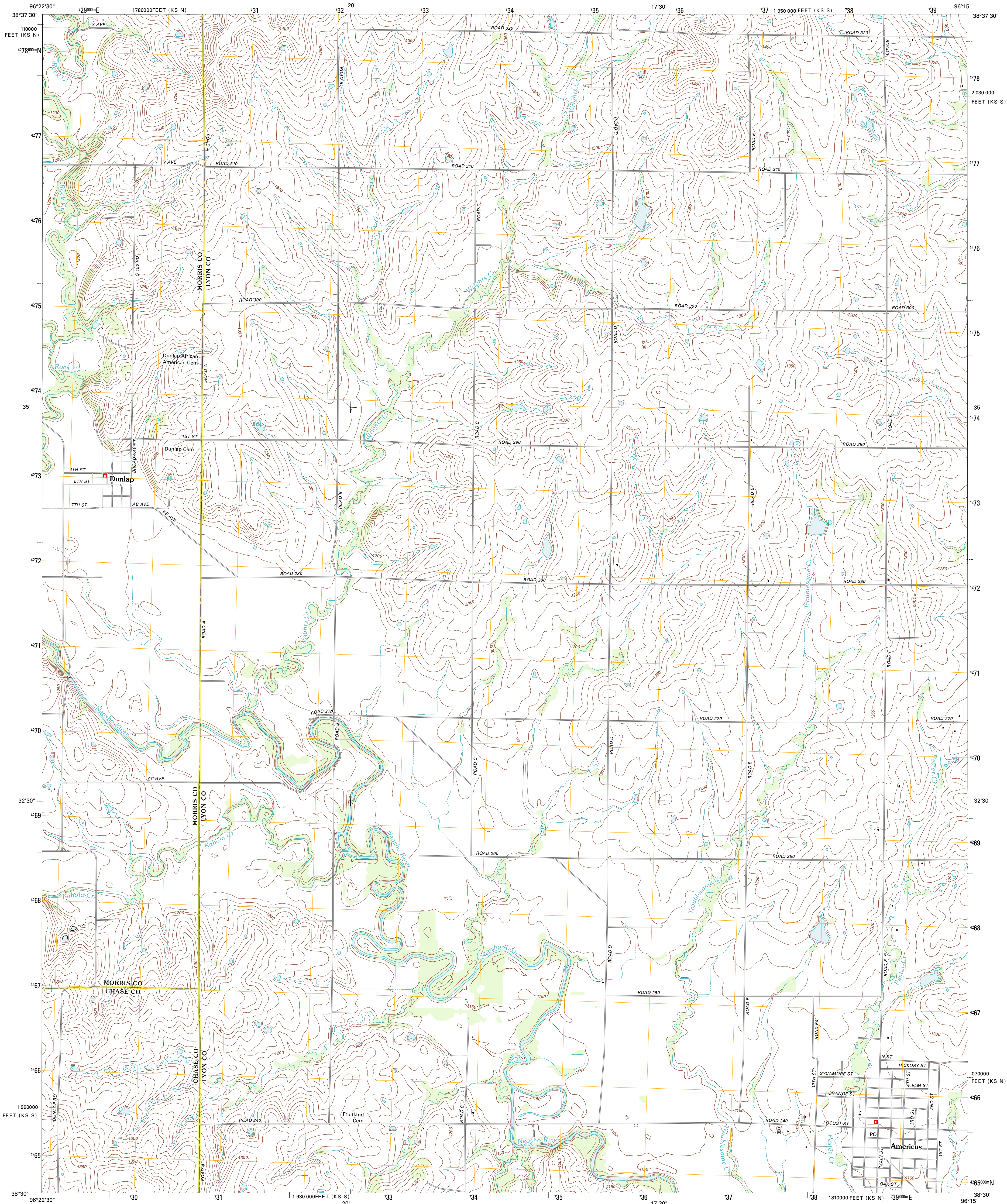




U.S. DEPARTMENT OF THE INTERIOR
U. S. GEOLOGICAL SURVEY



AMERICUS QUADRANGLE
KANSAS
7.5-MINUTE SERIES



Produced by the United States Geological Survey
North American Datum of 1983 (NAD83)
World Geodetic System of 1984 (WGS84). Projection and
1 000-meter grid: Universal Transverse Mercator, Zone 14S
10 000-foot ticks: Kansas Coordinate System of 1983 (south
and north zones)

Imagery.....NAIP, July 2010
Roads.....©2006-2011 TomTom
Names.....GNIS, 2012
Hydrography.....National Hydrography Dataset, 2010
Contours.....National Elevation Dataset, 2012
Boundaries.....Census, BWC, IBC, USGS, 1972 - 2012

UTM GRID AND 2012 MAGNETIC NORTH
DECLINATION AT CENTER OF SHEET

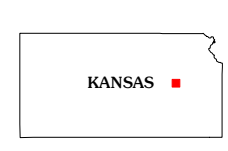
U.S. National Grid
100,000-m Square ID
0H
Grid Zone Designation
14S

SCALE 1:24 000

1 000 0 500 0 500 1000 2000
KILOMETERS
1 000 0 1000 2000 3000 4000 5000 6000 7000 8000 9000 10000
METERS
1 000 0 1000 2000 3000 4000 5000 6000 7000 8000 9000 10000
MILES
FEET

CONTOUR INTERVAL 10 FEET
NORTH AMERICAN VERTICAL DATUM OF 1988

This map was produced to conform with the
National Geospatial Program US Topo Product Standard, 2011.
A metadata file associated with this product is draft version 0.6.4



Council Grove	Bushong	Allen
Lake Kahola	Americus	Allen SW
Saffordville	Plymouth	Emporia

ROAD CLASSIFICATION

Interstate Route
US Route
Ramp
State Route
Local Road
4WD
Interstate Route
US Route
State Route

AMERICUS, KS
2012

ADJOINING 7.5 QUADRANGLES