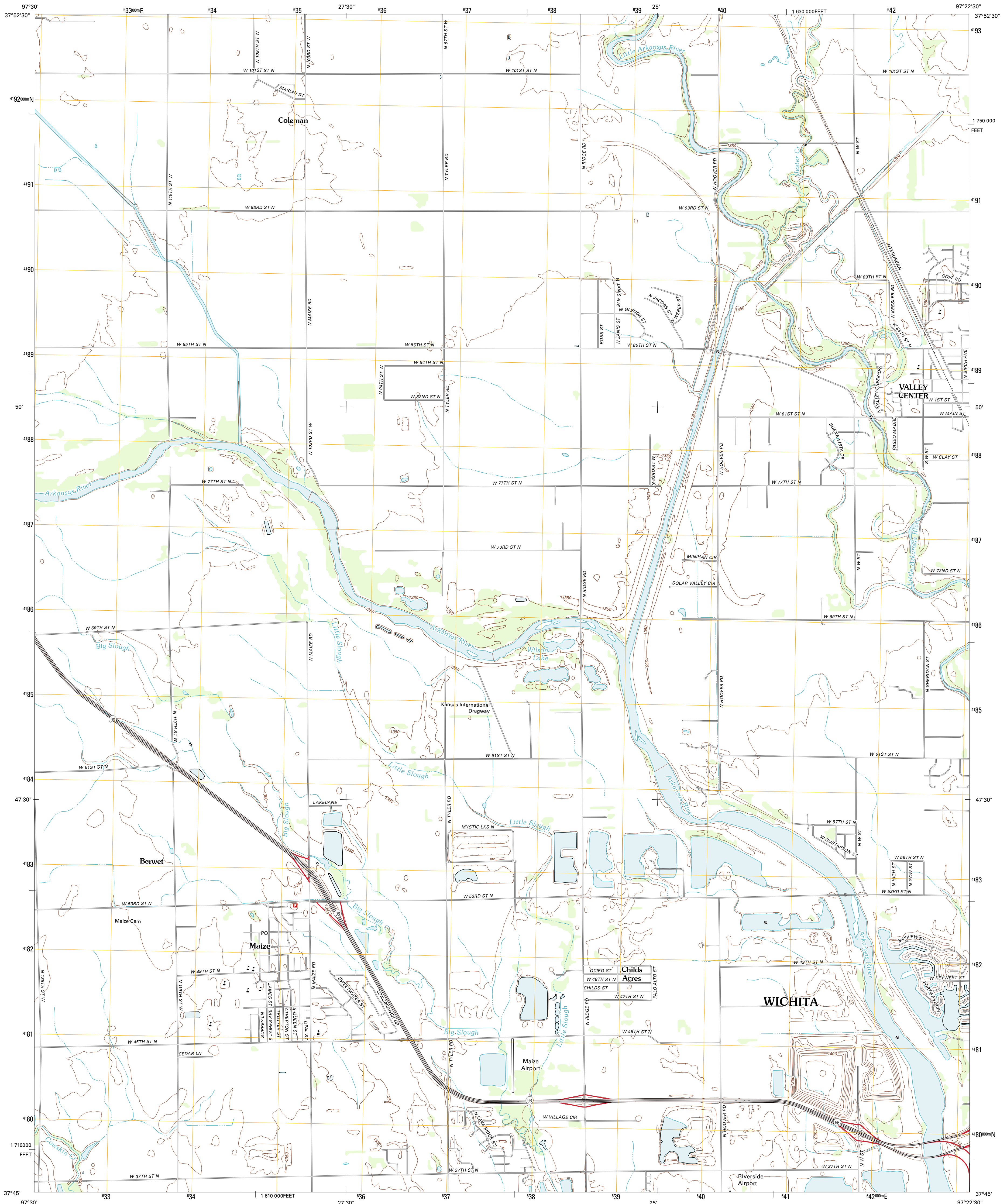




U.S. DEPARTMENT OF THE INTERIOR
U. S. GEOLOGICAL SURVEY



MAIZE QUADRANGLE
KANSAS-SEDGWICK CO.
7.5-MINUTE SERIES

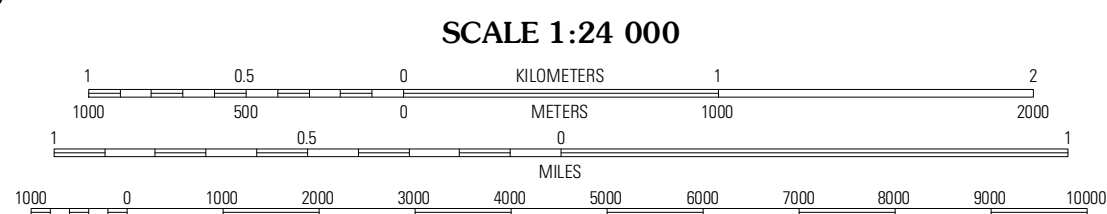


Produced by the United States Geological Survey
North American Datum of 1983 (NAD83)
Roads.....6/2006-2011 TomTom
Names.....GNIS, 2012
Hydrography.....National Hydrography Dataset, 2010
Contours.....National Elevation Dataset, 2012
Boundaries.....Census, BWC, IBC, USGS, 1972 - 2012

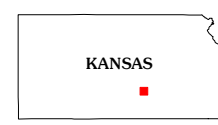
Imagery.....NAIP, July 2010
Roads.....6/2006-2011 TomTom
Names.....GNIS, 2012
Hydrography.....National Hydrography Dataset, 2010
Contours.....National Elevation Dataset, 2012
Boundaries.....Census, BWC, IBC, USGS, 1972 - 2012

UTM GRID AND 2012 MAGNETIC NORTH
DECLINATION AT CENTER OF SHEET

U.S. National Grid
100,000-m Square ID
PG
Grid Zone Designation
14S



CONTOUR INTERVAL 10 FEET
NORTH AMERICAN VERTICAL DATUM OF 1988
This map was produced to conform with the
National Geospatial Program US Topo Product Standard, 2011.
A metadata file associated with this product is draft version 0.6.4



Bentley	Sedgwick	Sedgwick NE
Colwich	Maize	Valley Center
Goddard	Wichita West	Wichita East

ADJOINING 7.5' QUADRANGLES

ROAD CLASSIFICATION
Interstate Route
US Route
Ramp
State Route
Local Road
4WD

MAIZE, KS
2012