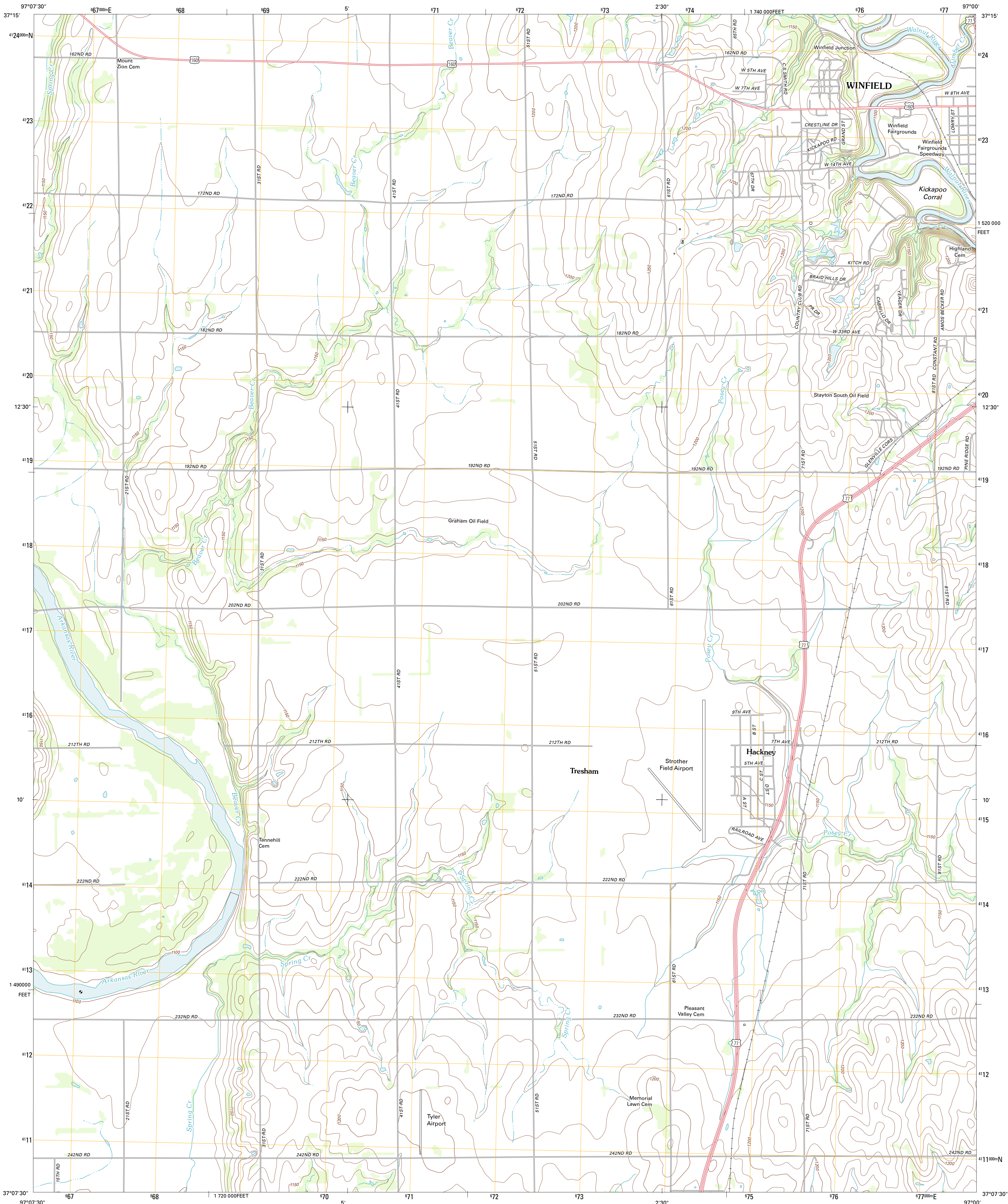




U.S. DEPARTMENT OF THE INTERIOR  
U. S. GEOLOGICAL SURVEY



HACKNEY QUADRANGLE  
KANSAS-COWLEY CO.  
7.5-MINUTE SERIES



Produced by the United States Geological Survey  
North American Datum of 1983 (NAD83)  
World Geodetic System of 1984 (WGS84). Projection and  
1 000-meter grid: Universal Transverse Mercator, Zone 14S  
10 000-foot ticks: Kansas Coordinate System of 1983 (south  
zone)

Imagery.....NAIP, June 2010  
Roads.....©2006-2011 TomTom  
Names.....GNIS, 2012  
Hydrography.....National Hydrography Dataset, 2010  
Contours.....National Elevation Dataset, 2005  
Boundaries.....Census, BWC, BIC, USGS, 1972 - 2012

UTM GRID AND 2012 MAGNETIC NORTH  
DECLINATION AT CENTER OF SHEET

U.S. National Grid  
100,000-m Square ID  
P6  
Grid Zone Designation  
14S

SCALE 1:24 000

1 000 0 500 0 500 1000 2000  
KILOMETERS  
1 000 0 1000 2000 3000 4000 5000 6000 7000 8000 9000 10000  
METERS  
1 000 0 1000 2000 3000 4000 5000 6000 7000 8000 9000 10000  
FEET

CONTOUR INTERVAL 10 FEET  
NORTH AMERICAN VERTICAL DATUM OF 1988

This map was produced to conform with the  
National Geospatial Program US Topo Product Standard, 2011.  
A metadata file associated with this product is draft version 0.6.4



Oxford	Akron	New Salem
Adamsville	Hackney	Winfield
Geuda Springs	Arkansas City	Silverdale

ADJOINING 7.5' QUADRANGLES

ROAD CLASSIFICATION

Interstate Route  
US Route  
Ramp

State Route  
Local Road  
4WD

Interstate Route  
US Route  
State Route

HACKNEY, KS  
2012