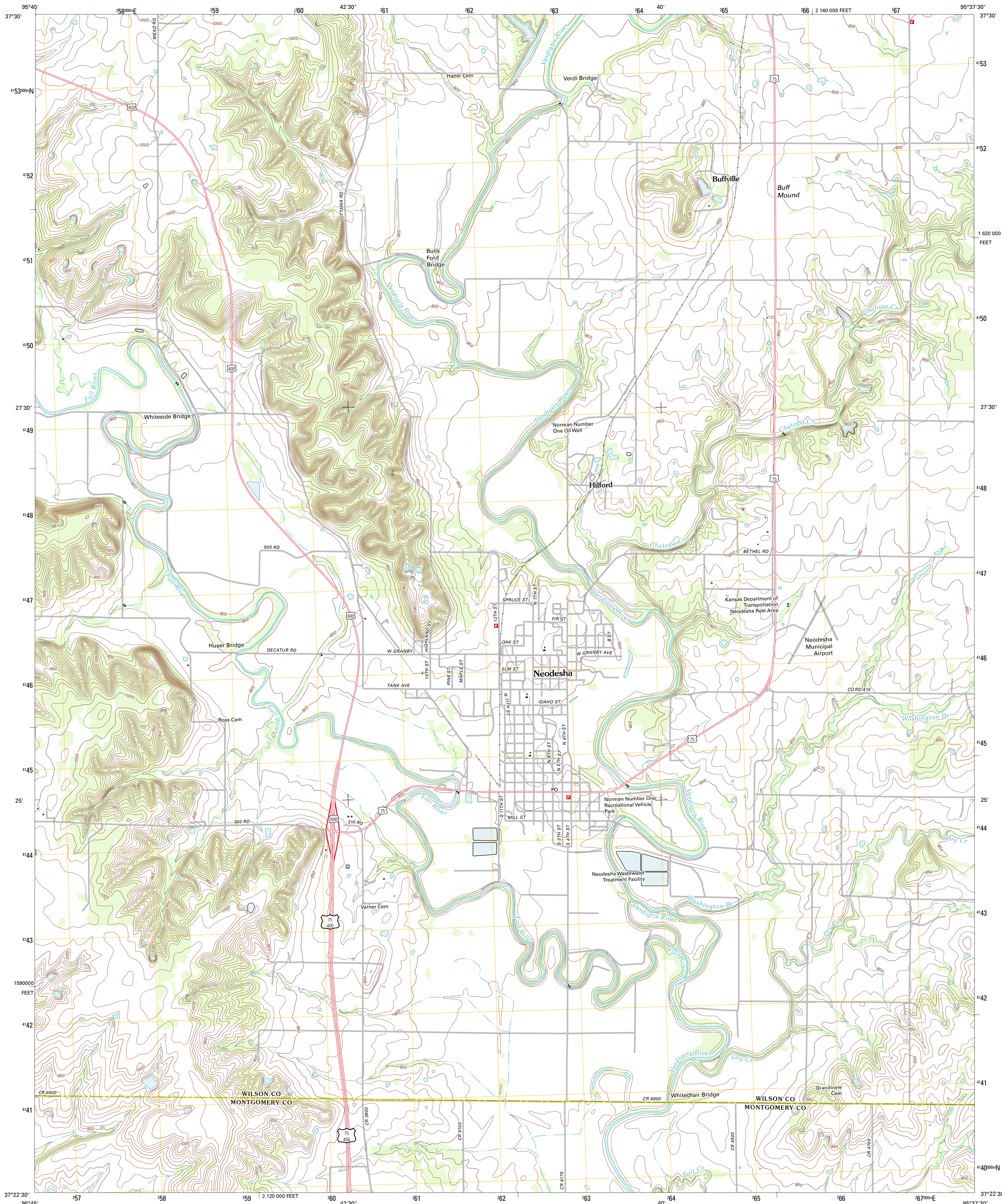




U.S. DEPARTMENT OF THE INTERIOR
U. S. GEOLOGICAL SURVEY



NEODESHA QUADRANGLE
KANSAS
7.5-MINUTE SERIES



Produced by the United States Geological Survey
North American Datum of 1983 (NAD83)
World Geodetic System of 1984 (WGS84). Projection and
1000-meter grid: Universal Transverse Mercator, Zone 15S
10 000-foot ticks: Kansas Coordinate System of 1983 (south
zone)

Imagery.....©2006-2011 TerraMetrics
Roads.....©2006-2011 TerraMetrics
Names.....©2006-2011 TerraMetrics
Hydrography.....National Hydrography Dataset, 2010
Contours.....National Elevation Dataset, 2006
Boundaries.....Census, BWC, IBC, USGS, 1972 - 2012

UTM GRID AND 2012 MAGNETIC NORTH
DECLINATION AT CENTER OF SHEET

U.S. National Grid
100,000m Square ID
TB
Grid Zone Designation
15S

SCALE 1:24 000

1 0.5 0 0.5 1 2
KILOMETERS

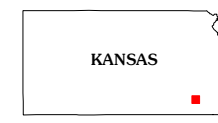
1000 500 0 500 1000
METERS

1 0 1000 2000 3000 4000 5000 6000 7000 8000 9000 10000
MILES

1000 0 1000 2000 3000 4000 5000 6000 7000 8000 9000 10000
FEET

CONTOUR INTERVAL 10 FEET
NORTH AMERICAN VERTICAL DATUM OF 1988

This map was produced to conform with the
National Geospatial Program US Topo Product Standard, 2011.
A metadata file associated with this product is draft version 0.6.4



QUADRANGLE LOCATION

Fredonia	Altoona	Five Mounds
Lafontaine	Neodesha	Morehead
Table Mound	Sycamore	Cherryvale

ADJOINING 7.5 QUADRANGLES

ROAD CLASSIFICATION

Interstate Route
US Route
Ramp

State Route
Local Road
4WD

NEODESHA, KS
2012