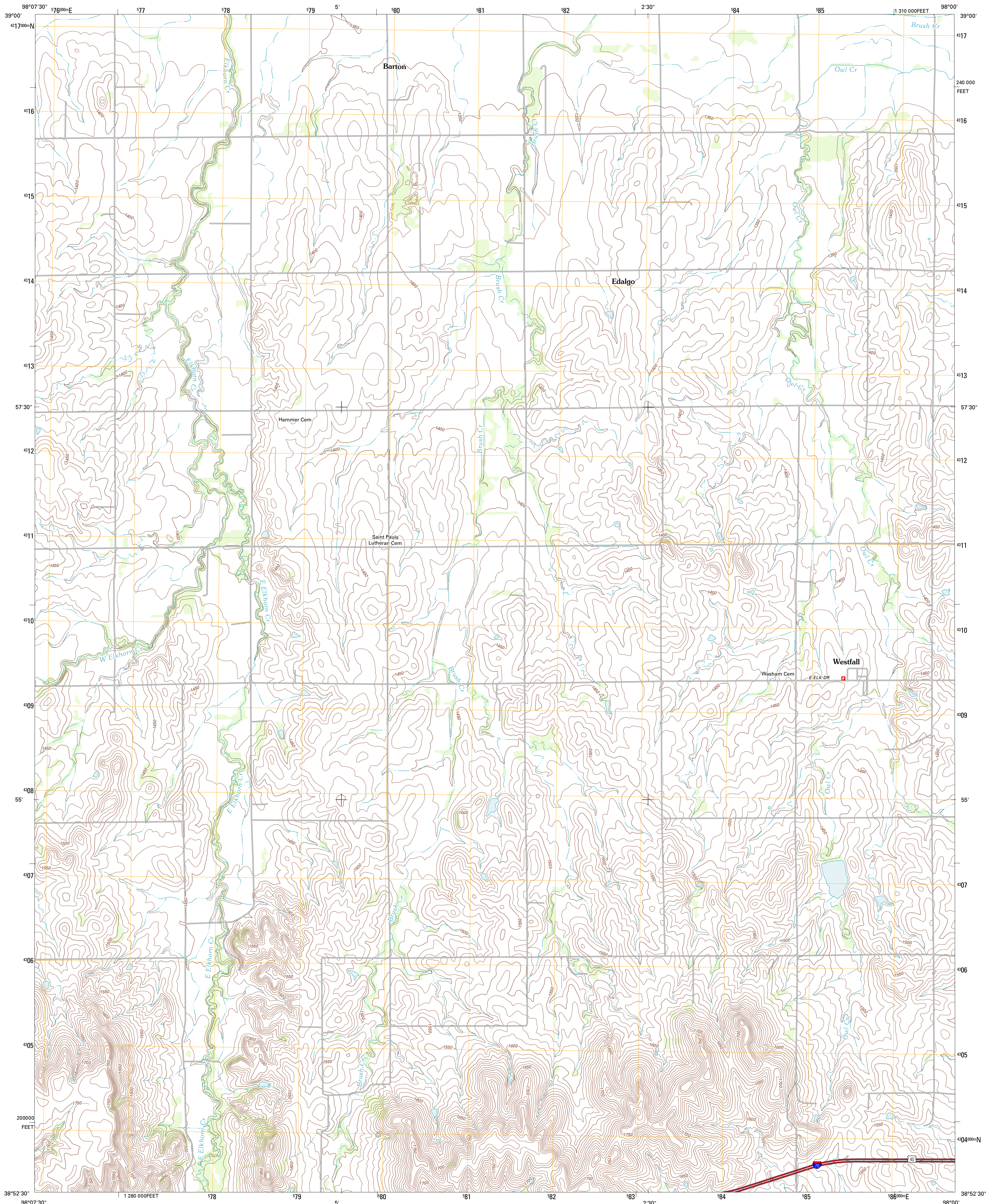




U.S. DEPARTMENT OF THE INTERIOR
U. S. GEOLOGICAL SURVEY

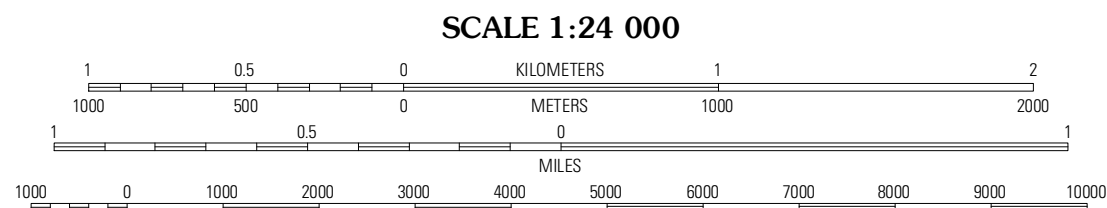
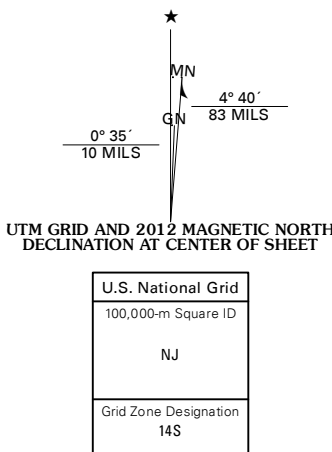


WESTFALL QUADRANGLE
KANSAS-LINCOLN CO.
7.5-MINUTE SERIES

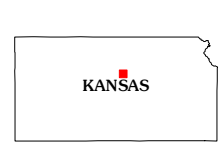


Produced by the United States Geological Survey
North American Datum of 1983 (NAD83)
World Geodetic System of 1984 (WGS84). Projection and
1 000-meter grid: Universal Transverse Mercator, Zone 14S
10 000-foot ticks: Kansas Coordinate System of 1983 (north zone)

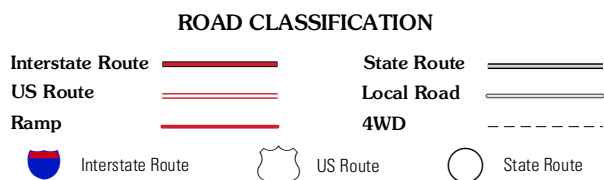
Imagery.....NAIP, July 2010
Roads.....©2006-2011 TomTom
Names.....GNIS, 2012
Hydrography.....National Hydrography Dataset, 2010
Contours.....National Elevation Dataset, 2005
Boundaries.....Census, IBWC, IBC, USGS, 1972 - 2012



CONTOUR INTERVAL 10 FEET
NORTH AMERICAN VERTICAL DATUM OF 1988
This map was produced to conform with the
National Geospatial Program US Topo Product Standard, 2011.
A metadata file associated with this product is draft version 0.6.4



QUADRANGLE LOCATION		
Lincoln	Shady Bend	Tescott
Westfall NW	Westfall	Junata
Westfall SW	Westfall SE	Brookville SW



WESTFALL, KS
2012