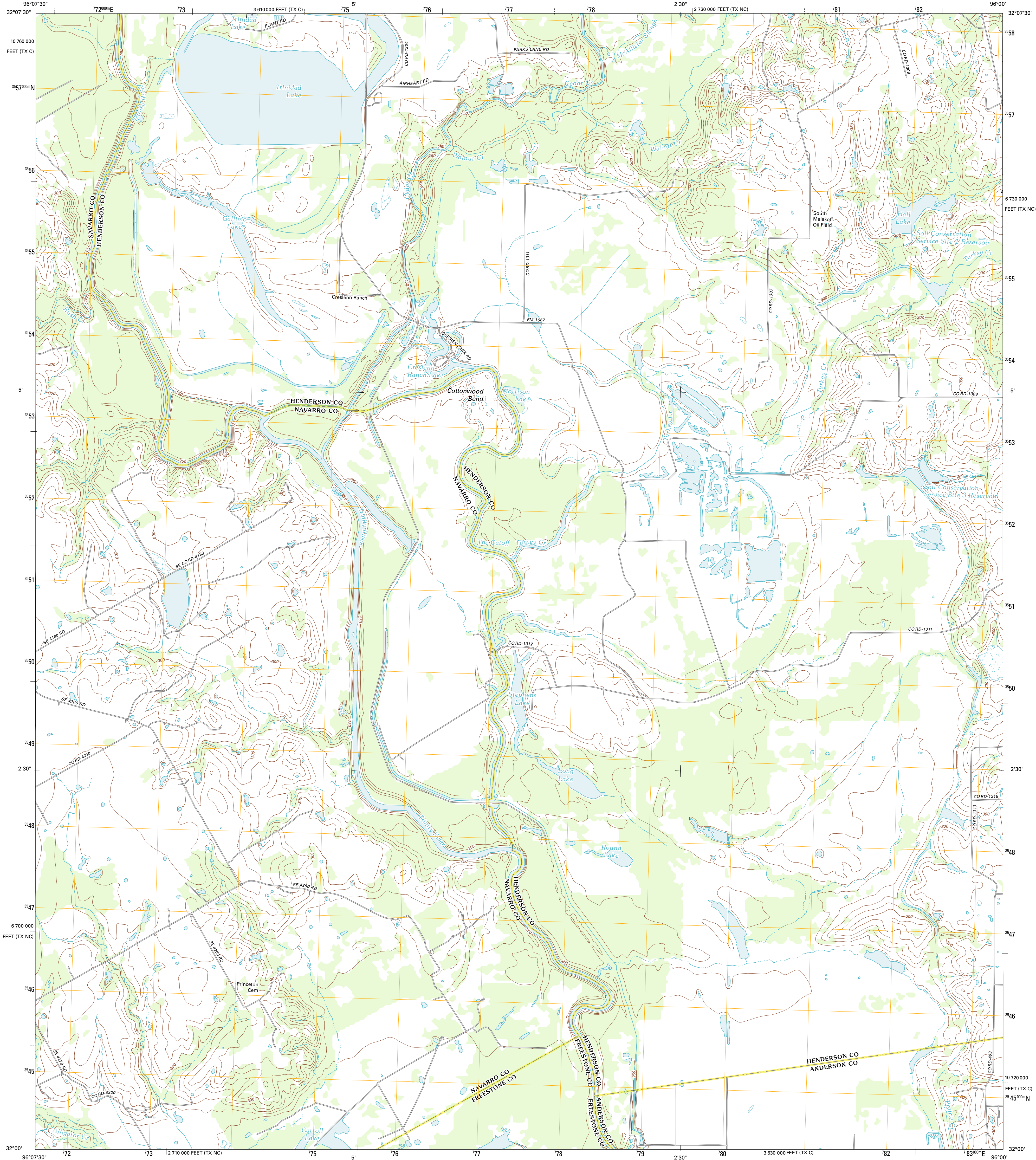




U.S. DEPARTMENT OF THE INTERIOR
U. S. GEOLOGICAL SURVEY

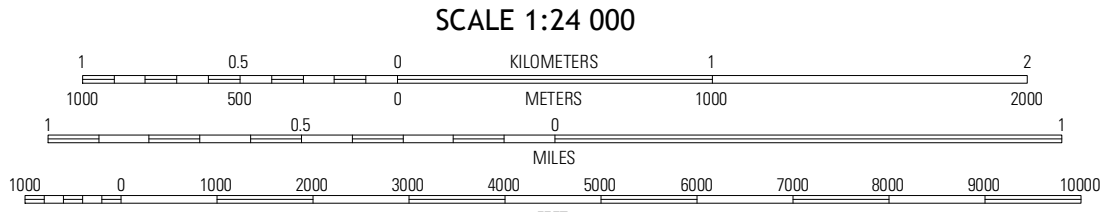
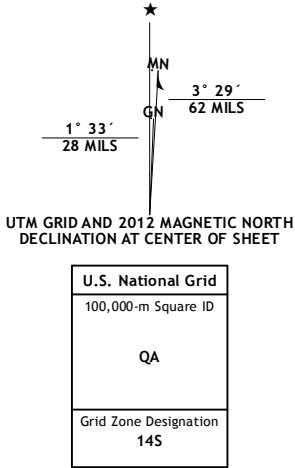


CRESLENN RANCH QUADRANGLE
TEXAS
7.5-MINUTE SERIES



Produced by the United States Geological Survey
North American Datum of 1983 (NAD83)
World Geodetic System of 1984 (WGS84). Projection and
1 000-meter grid: Universal Transverse Mercator, Zone 14S
10 000-foot ticks: Texas Coordinate System of 1983 (north
central and central zones)

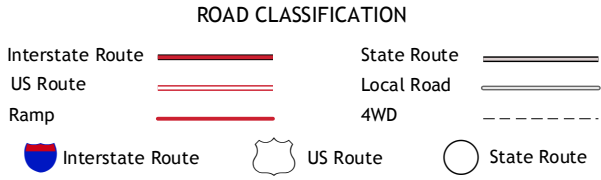
Imagery.....NAIP, August 2010
Roads.....©2006-2012 TomTom
Names.....GNIS, 2012
Hydrography.....National Hydrography Dataset, 2010
Contours.....National Elevation Dataset, 2003
Boundaries.....Census, IBWC, IBC, USGS, 1972 - 2012



CONTOUR INTERVAL 10 FEET
NORTH AMERICAN VERTICAL DATUM OF 1988
This map was produced to conform with the
National Geospatial Program US Topo Product Standard, 2011.
A metadata file associated with this product is draft version 0.6.7



| ADJOINING 7.5 QUADRANGLES | | |
|---------------------------|-----------------|--------------|
| Kerens | Malakoff | Mallard Hill |
| Goodline Park | Creslenn Ranch | Cross Roads |
| Winkler | Roussaboot Camp | Coyuga |



CRESLENN RANCH, TX
2012