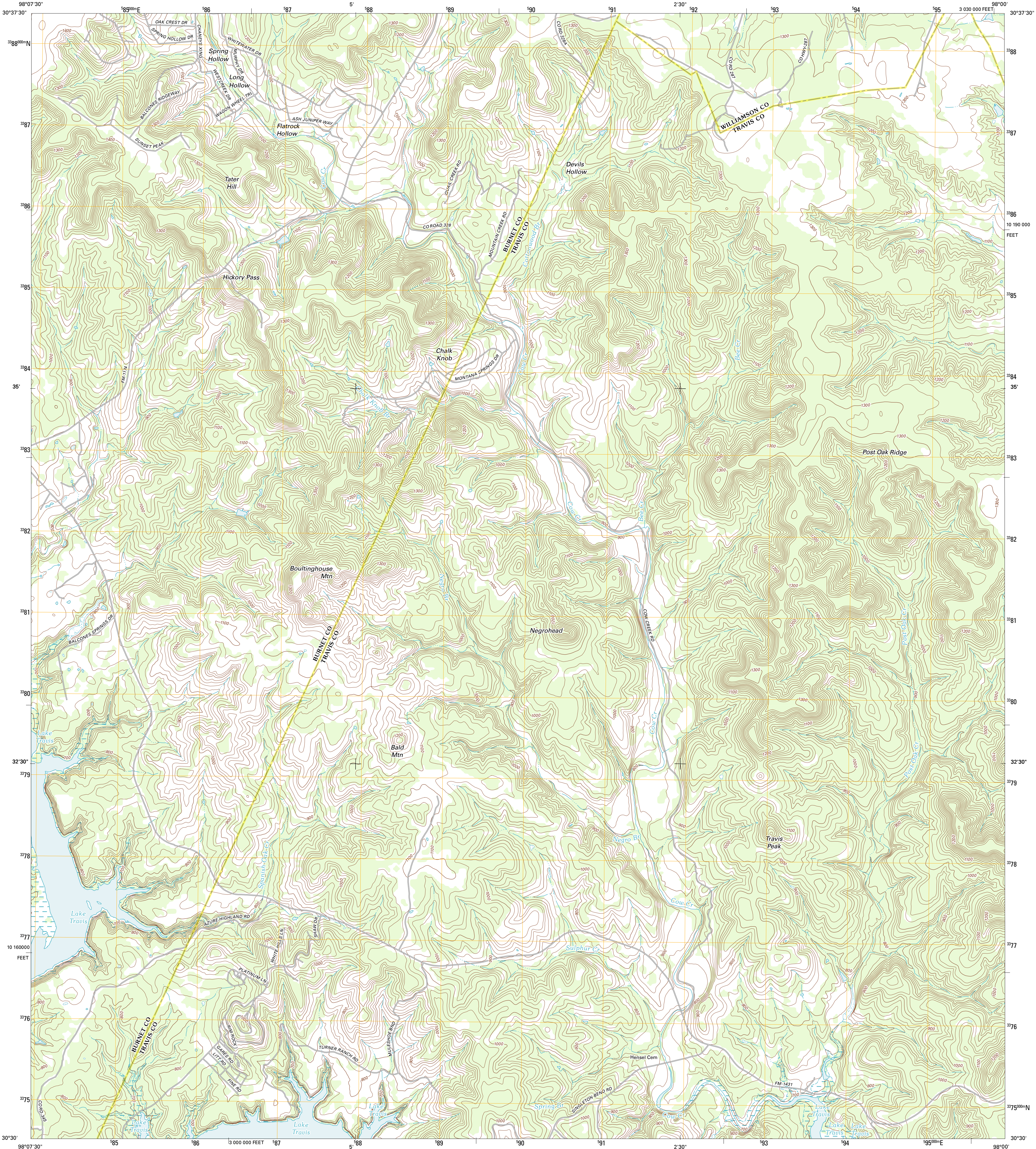




U.S. DEPARTMENT OF THE INTERIOR  
U. S. GEOLOGICAL SURVEY

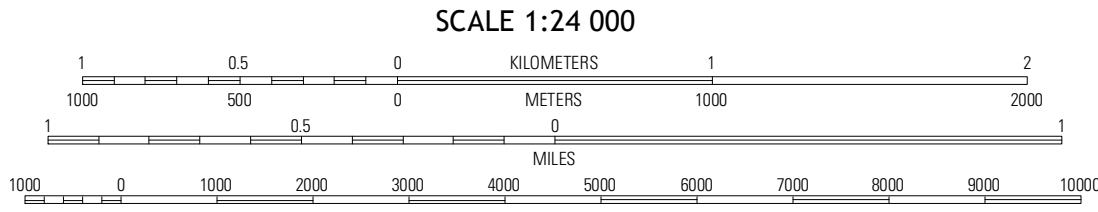
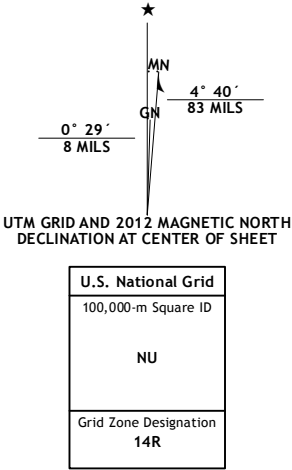


TRAVIS PEAK QUADRANGLE  
TEXAS  
7.5-MINUTE SERIES

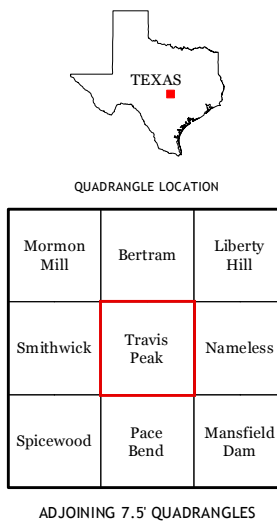


Produced by the United States Geological Survey  
North American Datum of 1983 (NAD83)  
World Geodetic System of 1984 (WGS84). Projection and  
1 000-meter grid; Universal Transverse Mercator, Zone 14R  
10 000-foot ticks; Texas Coordinate System of 1983 (central  
zone)

Imagery.....NAIP, May 2010  
Roads.....©2006-2012 TomTom  
Names.....©2012  
Hydrography.....National Hydrography Dataset, 2010  
Contours.....National Elevation Dataset, 2003  
Boundaries.....Census, BWC, IBC, USGS, 1972 - 2012



CONTOUR INTERVAL 20 FEET  
NORTH AMERICAN VERTICAL DATUM OF 1988  
This map was produced to conform with the  
National Geospatial Program US Topo Product Standard, 2011.  
A metadata file associated with this product is draft version 0.6.7



ROAD CLASSIFICATION			
Interstate Route	State Route	US Route	Local Road
Ramp	4WD		

TRAVIS PEAK, TX  
2012