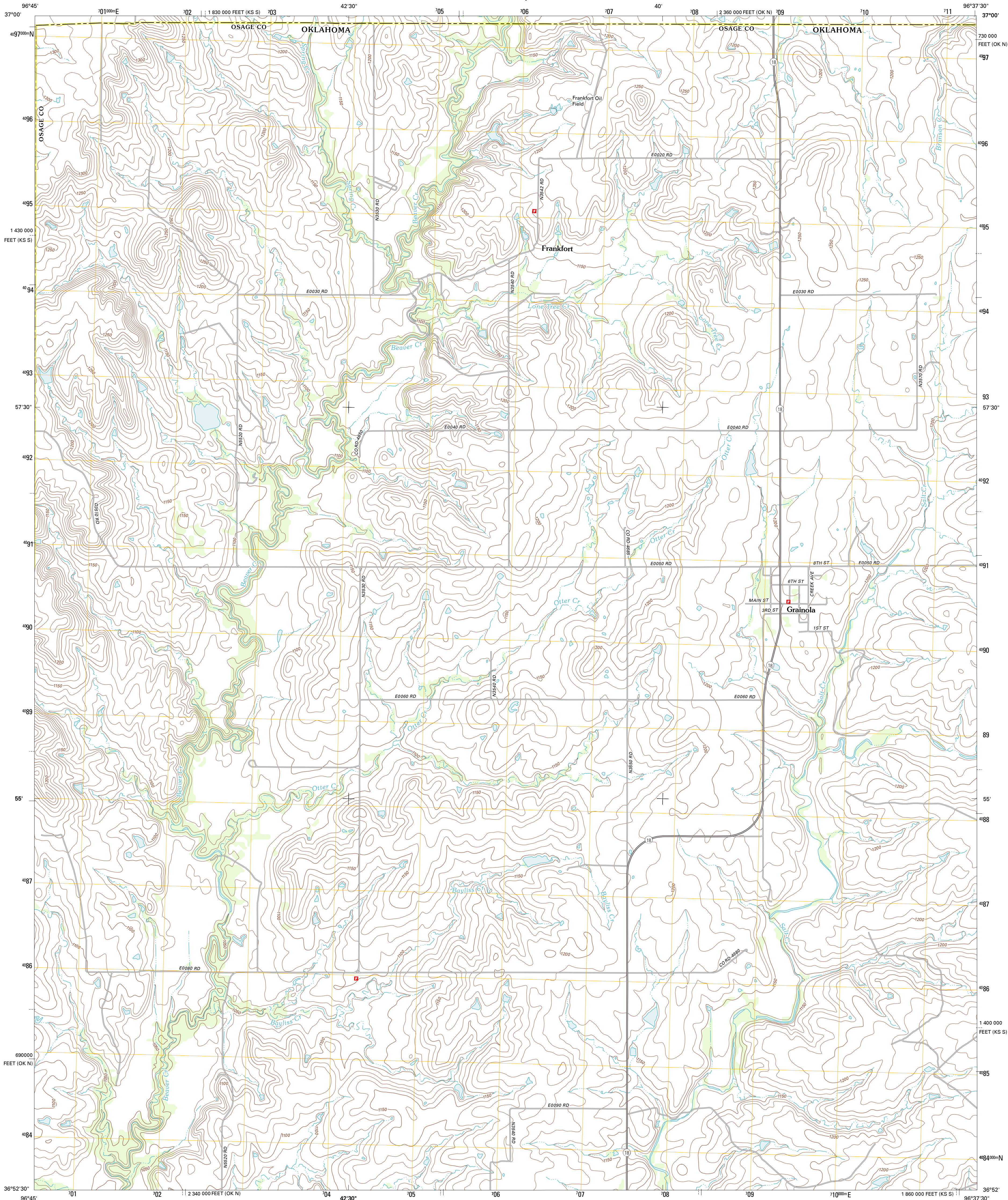




U.S. DEPARTMENT OF THE INTERIOR
U. S. GEOLOGICAL SURVEY

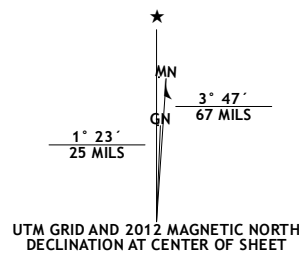


GRAINOLA QUADRANGLE
OKLAHOMA-KANSAS
7.5-MINUTE SERIES

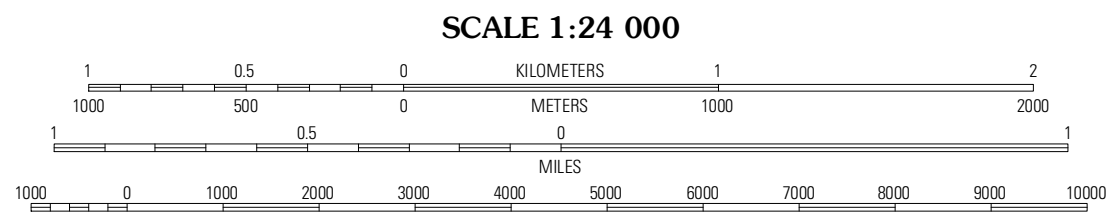


Produced by the United States Geological Survey
North American Datum of 1983 (NAD83)
World Geodetic System of 1984 (WGS84) Projection and
1 000-meter grid: Universal Transverse Mercator, Zone 14S
10 000-foot ticks: Oklahoma Coordinate System of 1983
(north zone), Kansas Coordinate System of 1983 (south zone)

Imagery.....NAIP, August 2010 - June 2012
Roads.....©2006-2011 TomTom
Names.....GNIS, 2012
Hydrography.....National Hydrography Dataset, 2010
Contours.....National Elevation Dataset, 2008
Boundaries.....Census, IBWC, IBC, USGS, 1972 - 2012



U.S. National Grid
100,000-m Square ID
QF
Grid Zone Designation
14S



CONTOUR INTERVAL 10 FEET
NORTH AMERICAN VERTICAL DATUM OF 1988
This map was produced to conform with the
National Geospatial Program US Topo Product Standard, 2011.
A metadata file associated with this product is draft version 0.6.6



Maple City	Dexter SW	Cedar Vale West
Hardy	Grainola	Forker North
Kaw City	Shidler	Forker South

ADJOINING 7.5' QUADRANGLES

ROAD CLASSIFICATION		
Interstate Route	State Route	
US Route	Local Road	
Ramp	4WD	
Interstate Route	US Route	State Route

GRAINOLA, OK-KS
2012